

MONDAY
25 DEC 2017
16:30 UTC+7

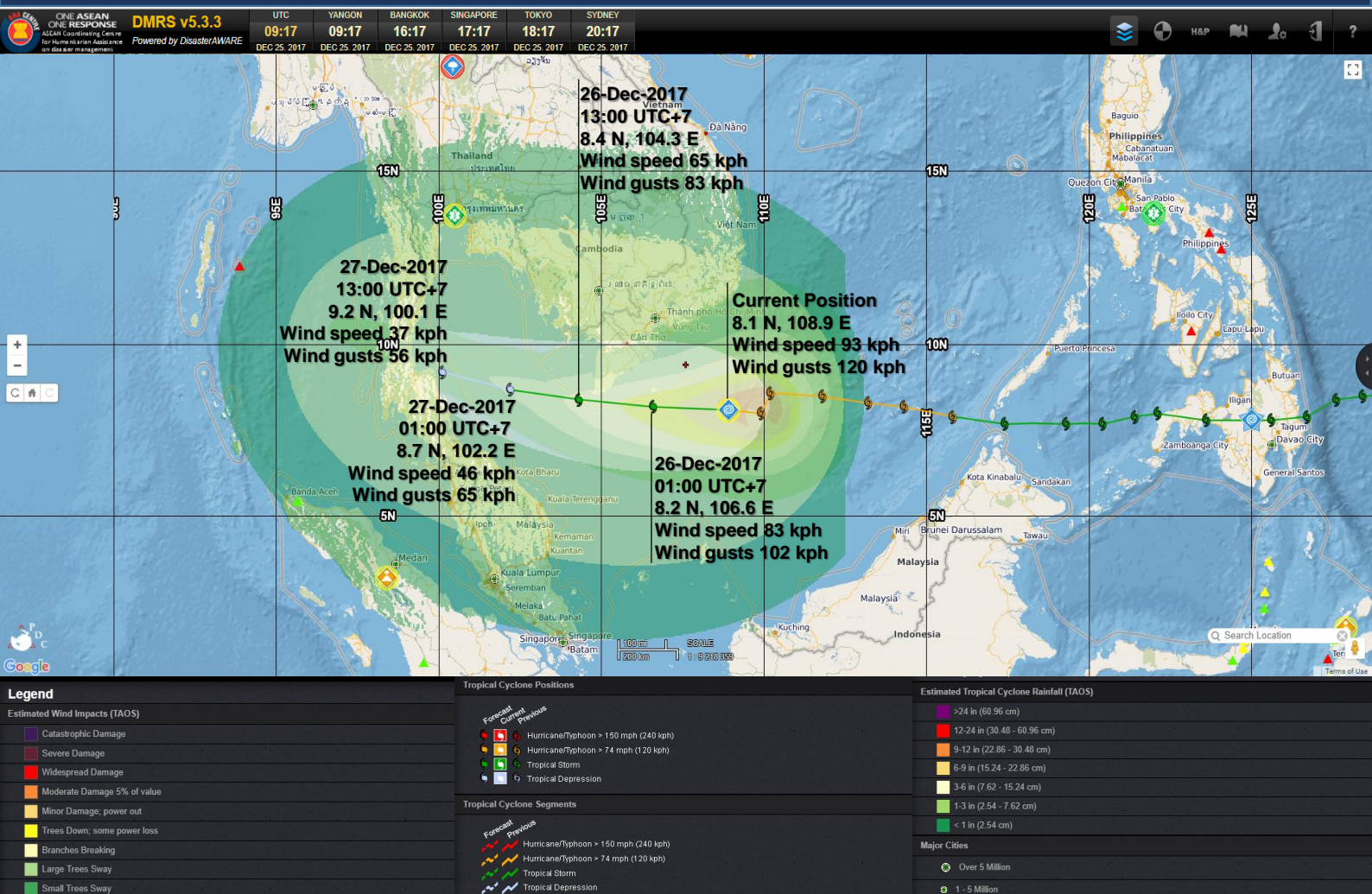
TROPICAL STORM TEMBIN (VINTA)

(Countries under monitoring: PH, MY, ID, VN, KH, TH)

FLASH UPDATE #8



ONE ASEAN ONE RESPONSE



1. AHA Centre Disaster Monitoring & Response System alert level downgraded to **"WATCH"** as **TS Tembin** slows down, currently located at 8.1 N, 108.9 E with maximum wind speeds of 93 kph (gusts of 120 kph).
2. TS Tembin **slows down, changed its course**, potentially does not make landfall in Viet Nam. Projected wind speeds and rainfall may still increase flood risks in southern part of Viet Nam, Cambodia, Thailand, Malaysia and Indonesia (figure above).
3. **Philippines**, impact & response ([NDRRMC](#), [DSWD](#))
 - **123 persons** death and **160 persons** still missing.
 - **541,005 persons (115,568 families)** are affected in 998 barangays in Region MIMAROPA, VII, IX, X, XI, XII, ARMM and CARAGA.
 - A total of **20,870 families (97,583 persons)** are still staying inside **261 evacuation centers** in Regions MIMAROPA, IX, X, XI and ARMM. A total of **16,544 families (84,794 persons)** in Regions IX, X, XI and XII are evacuating outside of centers, with families / friends.
 - Assistance to typhoon victims have accounted for around **6 million PHP/120,000 USD** (5.3 million PHP from [DSWD](#) & 0.6 million from local government units)

4. **Viet Nam**, update on preparedness
 - The [NCHMF](#) updated Typhoon Tembin warning for southern provinces (25-Dec-2017, 14:30 UTC+7).
 - Deputy Prime Minister of MARD visited and monitor preparedness status in [Soc Trang Province](#).
 - The [CCNDPC preparedness meeting](#), 25-Dec-17, released five strategies to accelerate evacuation.
 - The CCNDPC will directly assist preparedness efforts in [Kien Giang province](#).
5. Updates from other ASEAN member states
 - [Cambodia](#) released warnings of heavy rainfall, strong wind & high waves for southern provinces.
 - [Thailand](#) warns heavy rainfall in Prachuap Khiri Khan, Chumphon and Surat Thani; [provinces heavily flooded](#) in the past few weeks.
 - [Indonesia](#) and [Malaysia](#) updated its extreme weather warnings for areas such as provinces of [Aceh & North Sumatra](#) (ID) and states of [Kelantan & Terengganu](#) (MY), which flooded in November 2017.
5. Social media: [#VintaPH](#), [#Tembin](#) and a [Crisis Response Page](#) are active.
6. Once additional information becomes available, AHA Centre will release another update.

DATA SOURCE
AHA Centre Disaster Monitoring & Response System (DMRS);
Pacific Disaster Center (PDC Global); Open Street Map;

Brunei Darussalam: BMD; Cambodia: MWRM; Indonesia: BMKG, BNPB; Malaysia: MET Malaysia, NADMA; Philippines: DSWD, NDRRMC, PAGASA; Thailand: DDPM, TMD; Viet Nam: CCNDPC, NCHMF, VDMA

DISCLAIMER

The AHA Centre was established in November 2011 by the Association of South East Asian National (ASEAN) and ASEAN member states to facilitate cooperation and coordination among the Parties, relevant agencies of the United Nations and international organisations in disaster

management and humanitarian assistance.

The use of boundaries, geographic names, related information and potential considerations for response are for reference, not warranted to be error free or implying official endorsement from ASEAN Member States.

© 2017 AHA Centre.
All rights reserved.
You are receiving this email because you are registered in our distribution list.

Our mailing address is:
AHA Centre,
GRAHA BNPB 13th Floor,
Jl. Raya Pramuka Kav. 38,
Jakarta 13120 Indonesia

MONDAY
25 DEC 2017
16:30 UTC+7

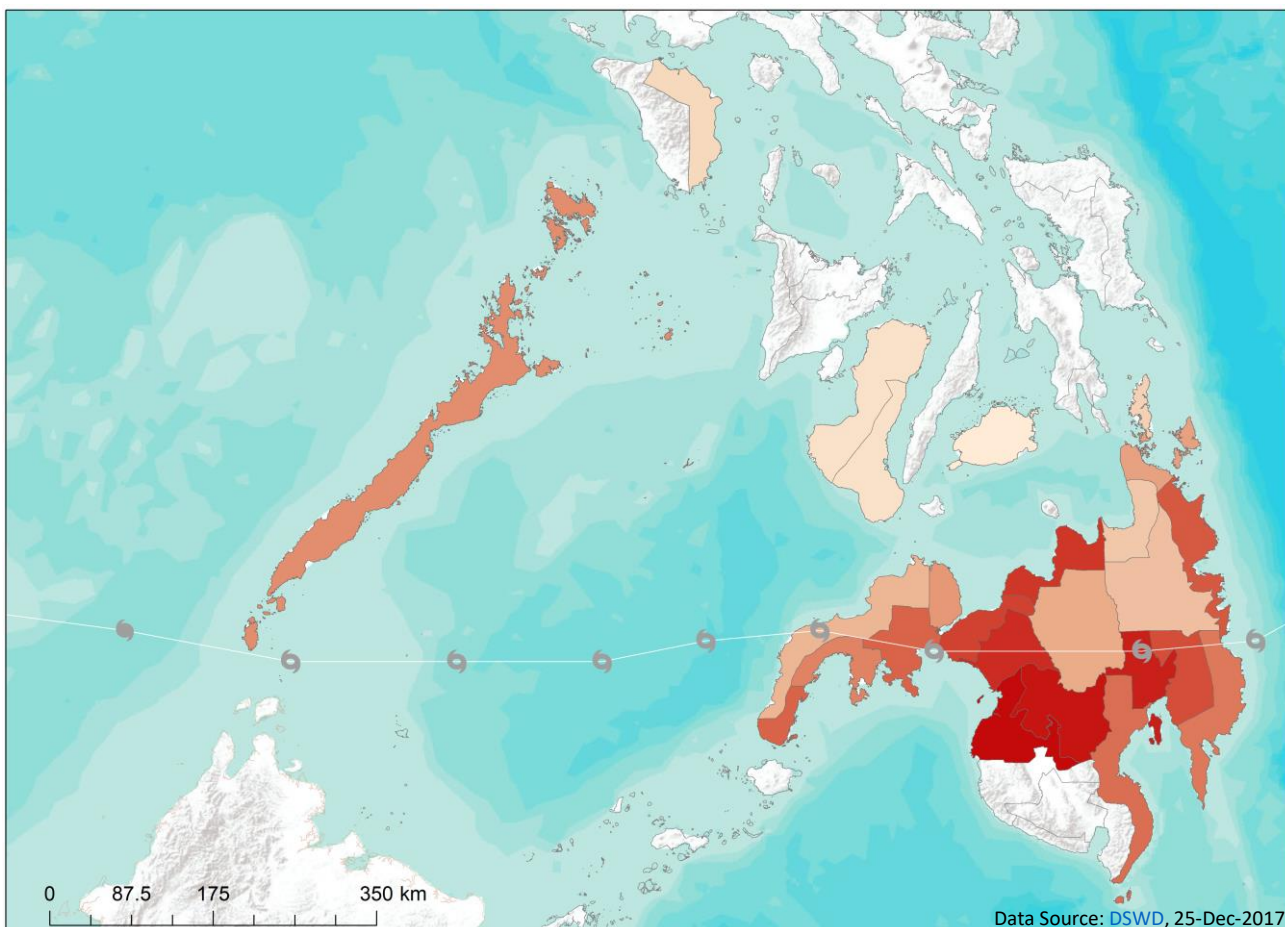
TROPICAL STORM TEMBIN (VINTA)

(Countries under monitoring: PH, MY, ID, VN, KH, TH)

FLASH UPDATE #8 - MAPS



ONE ASEAN ONE RESPONSE



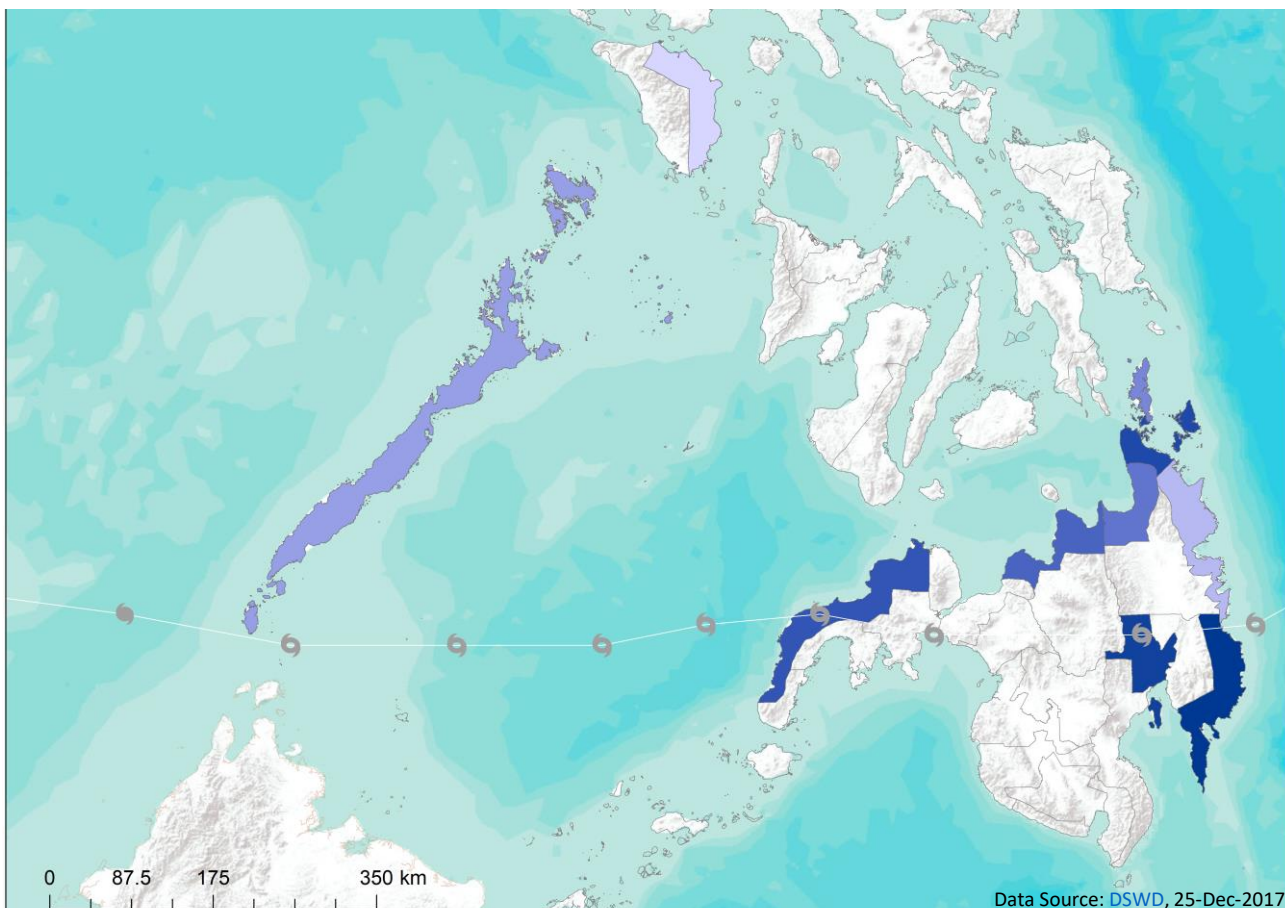
1 cm = 35 km

Legend

Persons	
68	8928
297	13718
719	14291
1305	17478
2351	19202
5674	24148
6206	34521
7808	35249
7844	59342
8444	70719
8798	76900
	116535



ONE ASEAN
ONE RESPONSE



1 cm = 35 km

Legend

Assistance (PHP)	
11606	
28179	
47988	
59298	
85000	
134200	
223200	
477524	
1963000	
3019670	



ONE ASEAN
ONE RESPONSE

DATA SOURCE

AHA Centre Disaster Monitoring & Response System (DMRS);
Pacific Disaster Center (PDC Global); Open Street Map;

Brunei Darussalam: BDMD; Cambodia: MWRM; Indonesia: BMKG,
BNPB; Malaysia: MET Malaysia, NADMA; Philippines: DSWD,
NDRRMC, PAGASA; Thailand: DDPM, TMD; Viet Nam: CCNDPC,
NCHMF, VDMA

DISCLAIMER

The AHA Centre was established in November 2011
by the Association of South East Asian National
(ASEAN) and ASEAN member states to facilitate
cooperation and coordination among the Parties,
relevant agencies of the United Nations and
international organisations in disaster

management and humanitarian assistance.

The use of boundaries, geographic names, related
information and potential considerations for response
are for reference, not warranted to be error free or
implying official endorsement from ASEAN Member
States.

© 2017 AHA Centre.
All rights reserved.
You are receiving this email
because you are registered in
our distribution list.

Our mailing address is:
AHA Centre,
GRAHA BNPB 13th Floor,
Jl. Raya Pramuka Kav. 38,
Jakarta 13120 Indonesia