

FRIDAY  
27 April 2018  
1800 UTC+7

# MYANMAR, MAJOR FIRE IN YANGON DUMP SITE



ONE ASEAN ONE RESPONSE

## SUMMARY OF EVENT

1. Major fire has broke out in Htein Pin Dump Site, Hlain Tharyar township, western part of Yangon, Myanmar, since Saturday, 21 April 2018 until today.
2. Smoke covered **20 townships** across Yangon, directly threatening an estimate of **796,852 people (vulnerable pop: 290,850)**.
3. Possible complications arising from smoke inhalation may include: a) respiratory difficulties, b) eyes and nose irritation (may or may not result in allergic rhinitis and conjunctivitis) and c) shortage of N95 masks
4. Highly vulnerable population include: a) Patients with existing respiratory conditions such as bronchitis, acute asthma and other upper respiratory tract disorders, b) firefighter and responders, c) Children and elderly and d) those staying near the dumpsite (possibly within 30 km radius and 630 sqkm) – heat stress from the smother and burning flames.
5. A fire anomaly was detected via remote sensing (captured on 22 April 2018): Overlaying the data allows us to draw the heat stress zone (4km by 3km) around the dump site.

### Vulnerable pop.



Male  
388,395  
(48.8%)



Female  
408,457  
(51.2%)



219,931  
(27.6%)



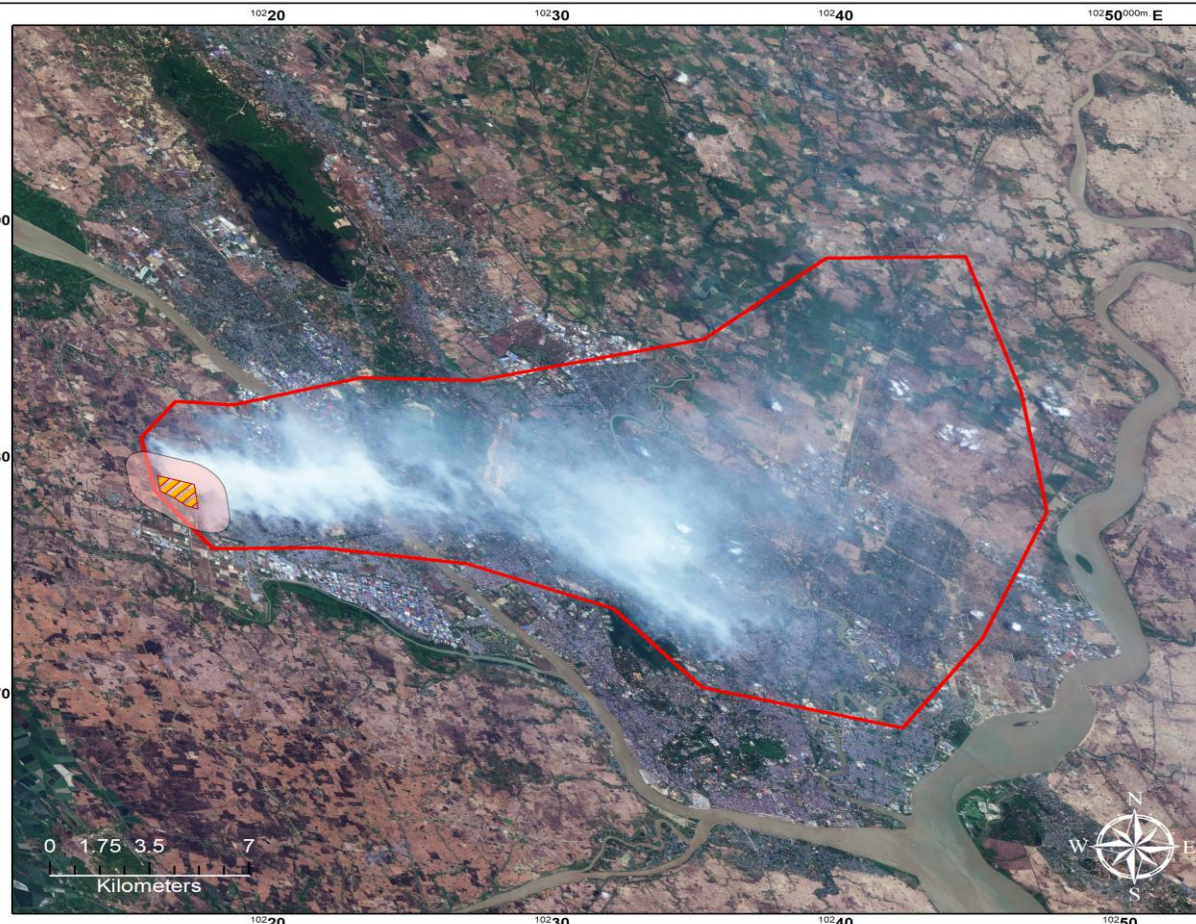
70,919  
(8.89%)

under 15 y.o.d    above 60 y.o.d

## AHA Centre and ASEAN Responses

1. **ASEAN Emergency Response and Assessment (ASEAN-ERAT)** is being mobilized to support Government of Myanmar in assessing the situation, fire fighting strategy and impact to public health.
2. AHA Centre will continue monitor the situation and provides additional updates once information becomes available.

## Source of Heat from Major Fire in Htain Bin Dump Site, Yangon



### Legend

- Htain Bin Dump Site
- Source of Heat
- Area Affected

### Image date

Sentinel data: 23 April 2018  
Modis data: 22 April 2018

### Map data source(s)

SENTINEL-2A ESA  
Copernicus Programme  
MOD 14, MODIS

### Web Resources

<https://scihub.copernicus.eu/>  
<https://earthengine.google.com/>

### Nominal scale at A4

1:200,000

### DATA SOURCES

AHA Centre Disaster Monitoring & Response System (DMRS);  
ASEAN Specialised Meteorological Center (ASMC);  
Myanmar: 1. Department of Disaster Management; 2. Department of  
Meteorology and Hydrology; 3. Myanmar Fire Services Department;  
Sentinel 2A, European Commission; WorldPop; HDX

### DISCLAIMER

The AHA Centre was established in November 2011  
by the Association of South East Asian National  
(ASEAN) and ASEAN member states to facilitate  
cooperation and coordination among the Parties,  
relevant agencies of the United Nations and  
international organisations in disaster

### management and humanitarian assistance.

The use of boundaries, geographic names, related  
information and potential considerations for response  
are for reference, not warranted to be error free or  
implying official endorsement from ASEAN Member  
States.

© 2018 AHA Centre.  
All rights reserved.  
You are receiving this email  
because you are registered in  
our distribution list.

Our mailing address is:  
AHA Centre,  
GRAHA BNBP 13<sup>th</sup> Floor,  
Jl. Raya Pramuka Kav. 38,  
Jakarta 13120 Indonesia



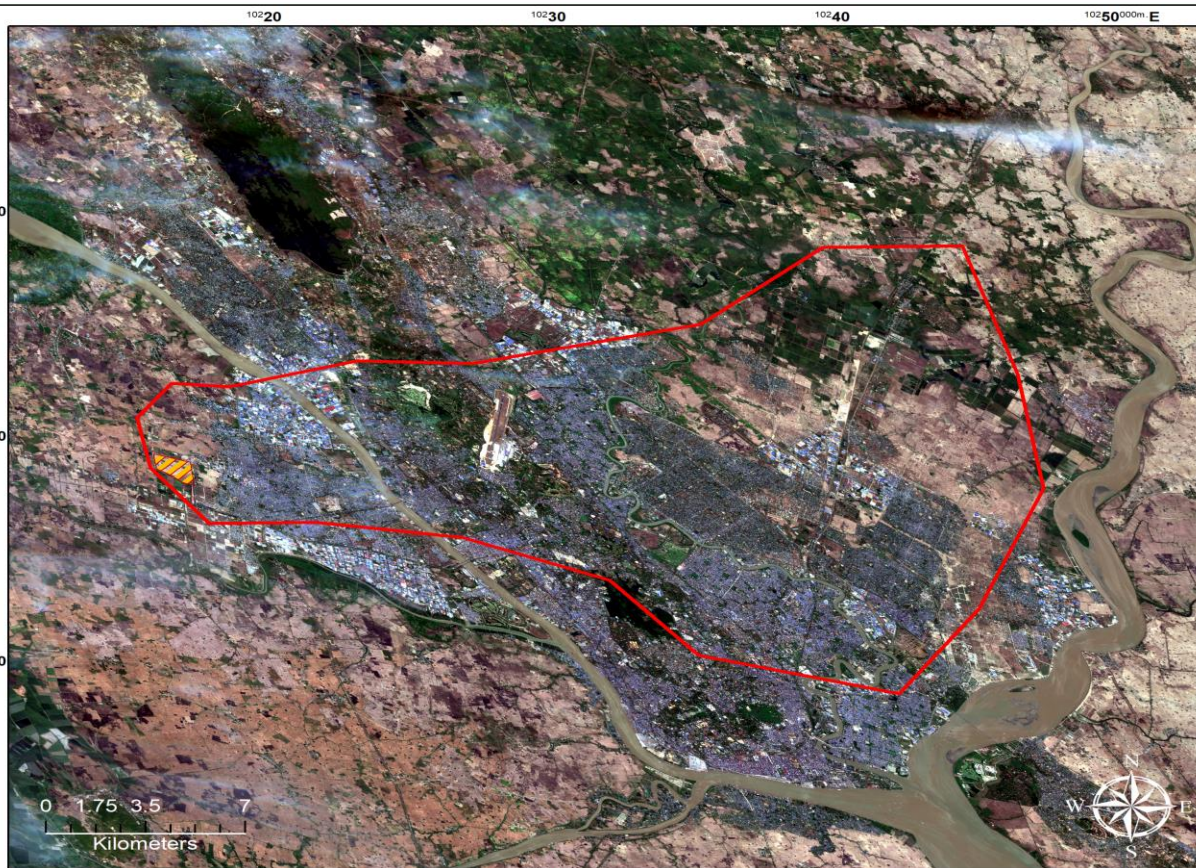
FRIDAY  
27 April 2018  
1800 UTC+7

# MYANMAR, MAJOR FIRE IN YANGON DUMP SITE



ONE ASEAN ONE RESPONSE

## Satellite Imagery Prior to Major Fire in Htain Bin Dump Site, Yangon



### Legend

- Htain Bin Dump Site
- Area Affected

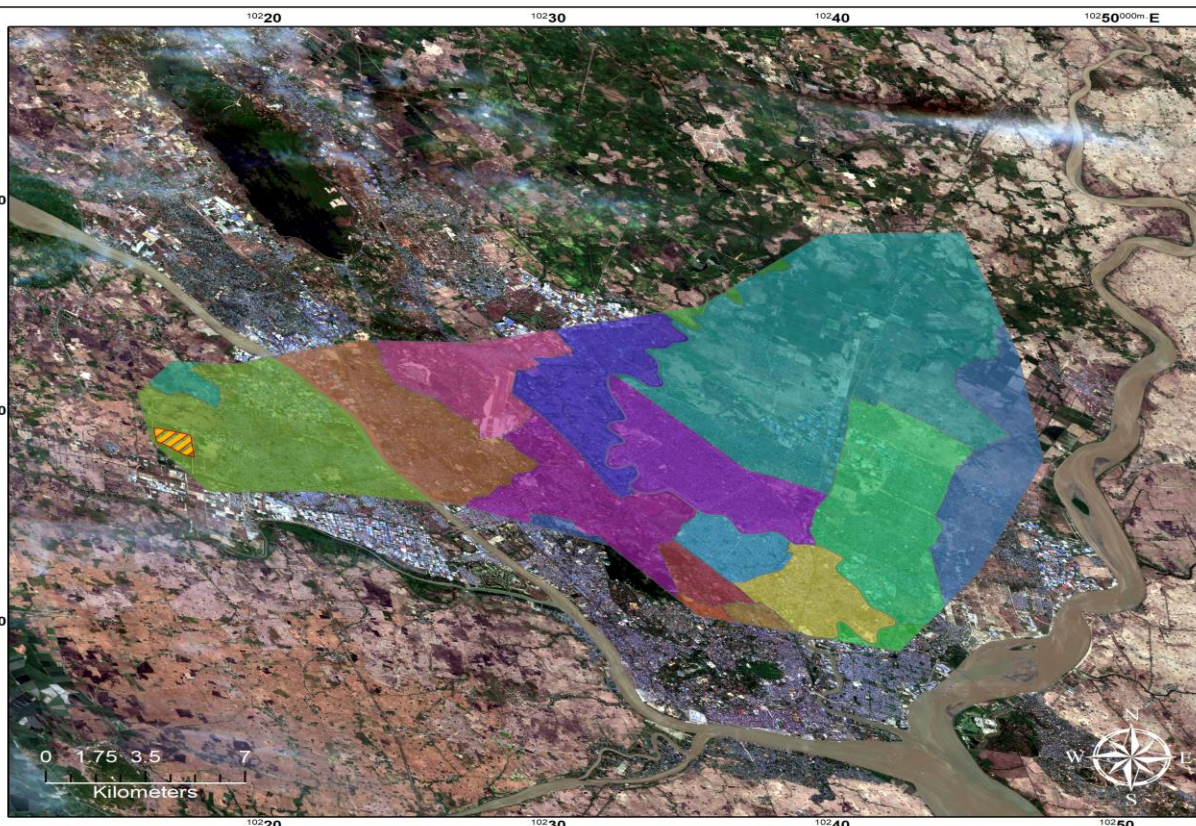
**Image date**  
13 April 2018

**Map data source(s)**  
SENTINEL-2A ESA  
Copernicus Programme

**Web Resources**  
<https://scihub.copernicus.eu/>

**Nominal scale at A4**  
1:200,000

## Townships Affected by Major Fire in Htain Bin Dump Site, Yangon



### Legend

- Htain Bin Dump Site
- Bahan
- Dagon Myothit (East)
- Dagon Myothit (North)
- Dagon Myothit (Seikkan)
- Dagon Myothit (South)
- Dawbon
- Hlaing
- Hlaingtharya
- Hlegu
- Htantabin
- Insein
- Mayangone
- Mingaladon
- North Okkalapa
- Shwepyithar
- South Okkalapa
- Tamwe
- Thaketa
- Thingangyun
- Yankin

**Approximate numbers of population exposed to smoke in 20 townships**  
796,852 people

**BY GENDER**  
Male: 388,395  
Female: 408,457

**BY VULNERABLE GROUP**  
Under 15 years old: 219,931  
Above 60 years old: 70,919

**Map data source(s)**  
a) Central Statistical Organization  
Government of Myanmar  
b) Worldpop  
c) SENTINEL-2A ESA  
Copernicus Programme

**Web Resources**  
<https://data.humdata.org/>  
<https://scihub.copernicus.eu/>  
<https://www.csostat.gov.mm/>

**Nominal scale at A4**  
1:200,000

### DATA SOURCES

AHA Centre Disaster Monitoring & Response System (DMRS);  
ASEAN Specialised Meteorological Center (ASMC);  
Myanmar: 1. Department of Disaster Management; 2. Department of  
Meteorology and Hydrology; 3. Myanmar Fire Services Department;  
Sentinel 2A; European Commission; WorldPop; HDX

### DISCLAIMER

The AHA Centre was established in November 2011  
by the Association of South East Asian National  
(ASEAN) and ASEAN member states to facilitate  
cooperation and coordination among the Parties,  
relevant agencies of the United Nations and  
international organisations in disaster

management and humanitarian assistance.

The use of boundaries, geographic names, related  
information and potential considerations for response  
are for reference, not warranted to be error free or  
implying official endorsement from ASEAN Member  
States.

© 2018 AHA Centre.  
All rights reserved.  
You are receiving this email  
because you are registered in  
our distribution list.

Our mailing address is:  
AHA Centre,  
GRAHA BNPB 13<sup>th</sup> Floor,  
Jl. Raya Pramuka Kav. 38,  
Jakarta 13120 Indonesia