

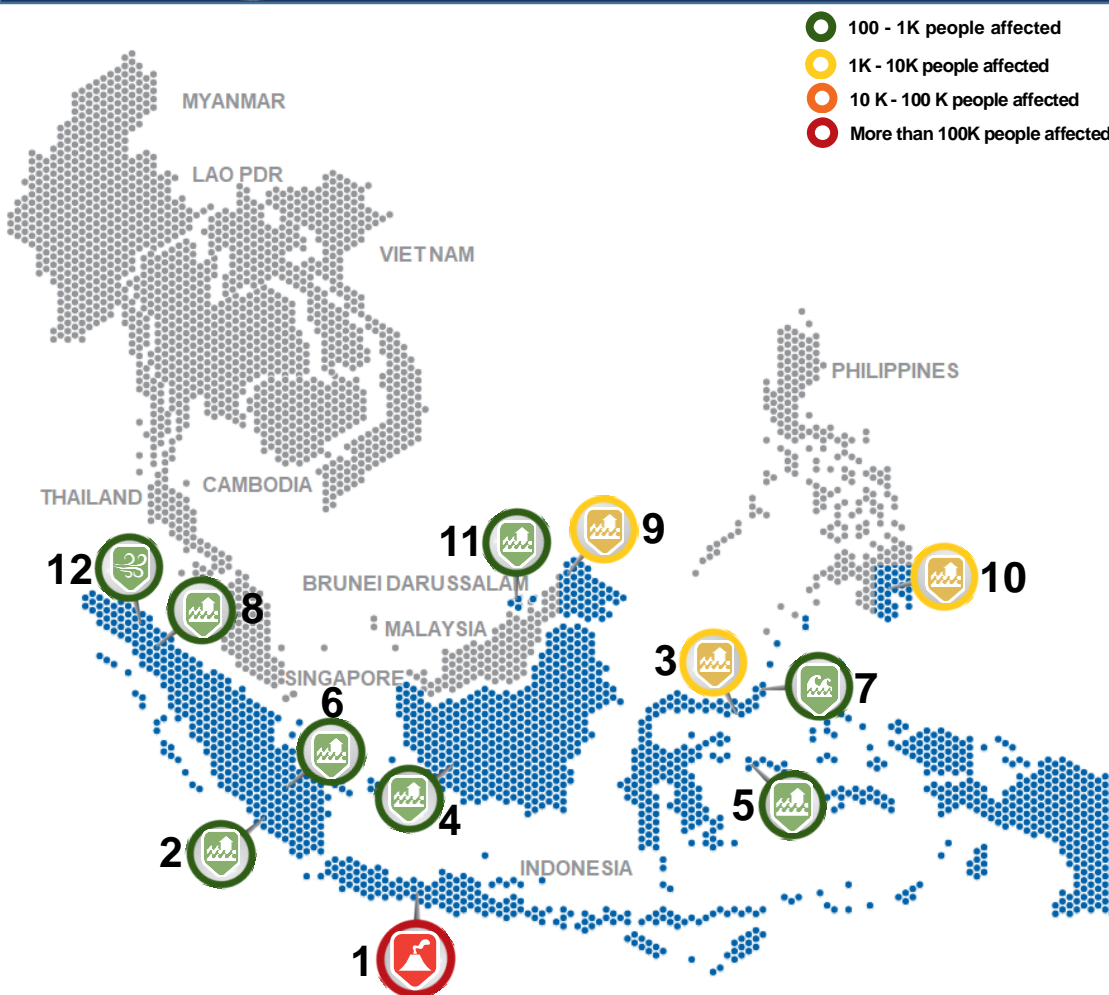
Week
22

WEEKLY DISASTER UPDATE

28 May – 3 June 2018



ONE ASEAN ONE RESPONSE



S/N	Date	Country, Disaster Log and Key Updates
1	28 May – 3 June 2018	Indonesia, Mount Merapi Phreatic Eruption Update adinet.ahacentre.org/reports/view/1165
2	28 May 2018	Indonesia, Flood in Seluma Regency (Bengkulu) http://adinet.ahacentre.org/reports/view/1172
3	29 May 2018	Indonesia, Flood in Bonebolango Regency (Gorontalo) http://adinet.ahacentre.org/reports/view/1180
4	30 May 2018	Indonesia, Flood in Lamandau Regency (Central Kalimantan) http://adinet.ahacentre.org/reports/view/1174
5	30 May 2018	Indonesia, Flood in Pulau Talibu Regency (North Maluku) http://adinet.ahacentre.org/reports/view/1179
6	30 May 2018	Indonesia, Flood in Musi Rawas Regency (South Sumatra) http://adinet.ahacentre.org/reports/view/1173
7	31 May 2018	Indonesia, Storm in Southeast Minahasa Regency http://adinet.ahacentre.org/reports/view/1175
8	31 May 2018	Indonesia, Flood in Asahan Regency http://adinet.ahacentre.org/reports/view/1176
9	1 June 2018	Malaysia, Flood in Sabah http://adinet.ahacentre.org/reports/view/1178
10	2 June 2018	Philippines, Flood in Davao city http://adinet.ahacentre.org/reports/view/1170
11	2 June 2018	Brunei Darussalam, Flood in Tutong District http://adinet.ahacentre.org/reports/view/1171
12	2 June 2018	Indonesia, Strong Wind in Simalungun Regency http://adinet.ahacentre.org/reports/view/1177

Regional Summary (Week 22)

- Hydro-meteorological disasters continue to dominate in ASEAN countries in Week 22, with floods, strong wind, storm surge in Brunei Darussalam, Indonesia and Malaysia due to the start of Tropical Depression 5 (TD-5)
- TD-5 is currently in the sea of Viet Nam and moving north towards China. Government of Viet Nam is undertaking necessary preparedness activities ([VDMA](#)). See Page 2 for TD-5 forecast.
- Mount Merapi in Indonesia erupted three times on 1 June 2018, releasing ash column up to 6,000 meters in the first eruption. Ash rain was observed in 12 municipalities of Central Java Province and it force two airports to temporarily shut-down. Mount Merapi Status maintained at Alert Level 2 (out of maximum 4) ([PVMBG](#)).
- Earthquakes felt in week 22 in Indonesia and Philippines were mostly moderate with no damages and casualties reported. There were 6 moderate earthquakes of $M \geq 4.5$ with felt-intensity of MMI II-III in Indonesia ([BMKG](#)). There were 9 moderate earthquakes of $M \geq 4.0$ with felt-intensity of MMI II-III in Philippines ([PHIVOLCS](#)).
- All disasters occurred in Week 22 were within the capacity of respective ASEAN Member States.

Regional Tally



Affected population: 270,186*
Affected households: 6,004*

*AHA Centre's estimation based on total number of deaths, injuries and IDPs reported by National Disaster Management Offices (NDMOs) of each ASEAN Member State and other verified sources.

DATA SOURCE

Detailed information of each disaster and emergency situation are available at: <http://adinet.ahacentre.org/reports>

AHA Centre - Disaster Monitoring & Response System (DMRS); Pacific Disaster Center (PDC Global); Brunei Darussalam: BDMD, NDMC; Indonesia: BNPB, BPBDs, of affected municipalities, BMKG and PVMBG-ESDM; Malaysia: NADMA, InfoBanjir; Philippines: NDRRMC, DSWD, PAGASA; VietNam: CCNDPC/VDMA, NCHMF; Various news agencies

DISCLAIMER

The AHA Centre was established in November 2011 by the Association of Southeast Asian Nations (ASEAN) Member States to facilitate cooperation and coordination among Member States, relevant agencies of the United Nations and international organisations in disaster management and humanitarian assistance.

This update consists of significant natural disaster events that occur in ASEAN Member States, including Brunei Darussalam, Cambodia, Indonesia, Lao PDR, Malaysia,

Myanmar, Philippines, Singapore, Thailand and Viet Nam. The disasters recorded include Drought, Flood, Earthquake, Tsunami, Volcano, Wind, Landslide and Storm.

The use of boundaries, geographic names, related information and potential considerations for response are for reference, not warranted to be error free or implying official endorsement from ASEAN Member States.

© 2017 AHA Centre.
All rights reserved.
You are receiving this email because you are registered in our distribution list.

Our mailing address is:
AHA Centre,
GRAHA BNPB 13th Floor,
Jl. Raya Pramuka Kav. 38,
Jakarta 13120 Indonesia

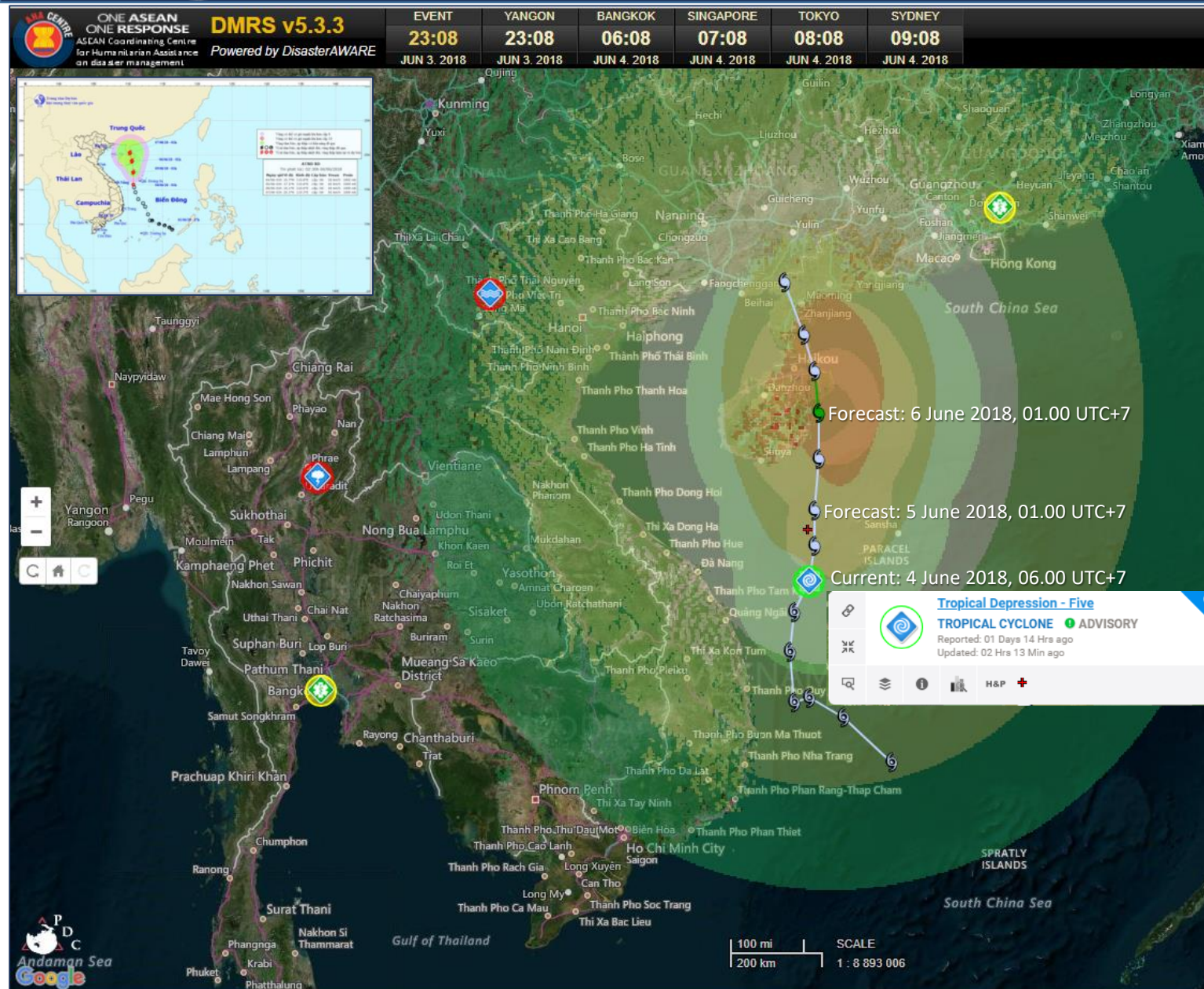
Week
22

WEEKLY DISASTER UPDATE

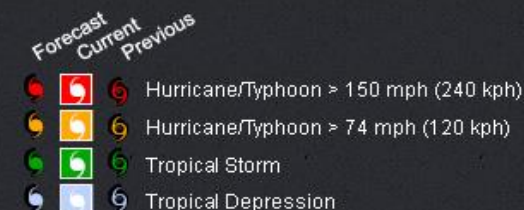
28 May – 3 June 2018



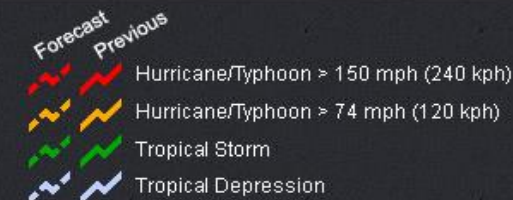
ONE ASEAN ONE RESPONSE



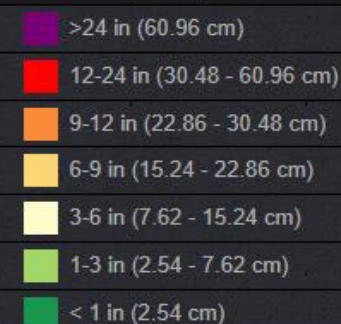
Tropical Cyclone Positions



Tropical Cyclone Segments



Estimated Tropical Cyclone Rainfall (TAOS)



Tropical Cyclone Impacts for Tropical Depression - Five, Advisory #7
Areas exposed to winds between 34 - 76 km/hr:

- Central-northern part of Viet Nam
- China, Guangdong Sheng, Guangxi Zhuangzu Zizhiqu, Hainan Sheng

DATA SOURCE
Detailed information of each disaster and emergency situation are available at: <http://adinet.ahacentre.org/reports>
AHA Centre - Disaster Monitoring & Response System (DMRS); Pacific Disaster Center (PDC Global);
Brunei Darussalam: BDMD, NDMC; Indonesia: BNPB, BPBDs, of affected municipalities, BMKG and PVMBG-ESDM; Malaysia: NADMA, InfoBanjar; Philippines: NDRRMC, DSWD, PAGASA;
Vietnam: CCNDPC/VDMA, NCHMF; Various news agencies

DISCLAIMER
The AHA Centre was established in November 2011 by the Association of Southeast Asian Nations (ASEAN) Member States to facilitate cooperation and coordination among Member States, relevant agencies of the United Nations and international organisations in disaster management and humanitarian assistance.
This update consists of significant natural disaster events that occur in ASEAN Member States, including Brunei Darussalam, Cambodia, Indonesia, Lao PDR, Malaysia,

Myanmar, Philippines, Singapore, Thailand and Viet Nam. The disasters recorded include Drought, Flood, Earthquake, Tsunami, Volcano, Wind, Landslide and Storm.
The use of boundaries, geographic names, related information and potential considerations for response are for reference, not warranted to be error free or implying official endorsement from ASEAN Member States.

© 2017 AHA Centre.
All rights reserved.
You are receiving this email because you are registered in our distribution list.

Our mailing address is:
AHA Centre,
GRAHA BNPB 13th Floor,
Jl. Raya Pramuka Kav. 38,
Jakarta 13120 Indonesia