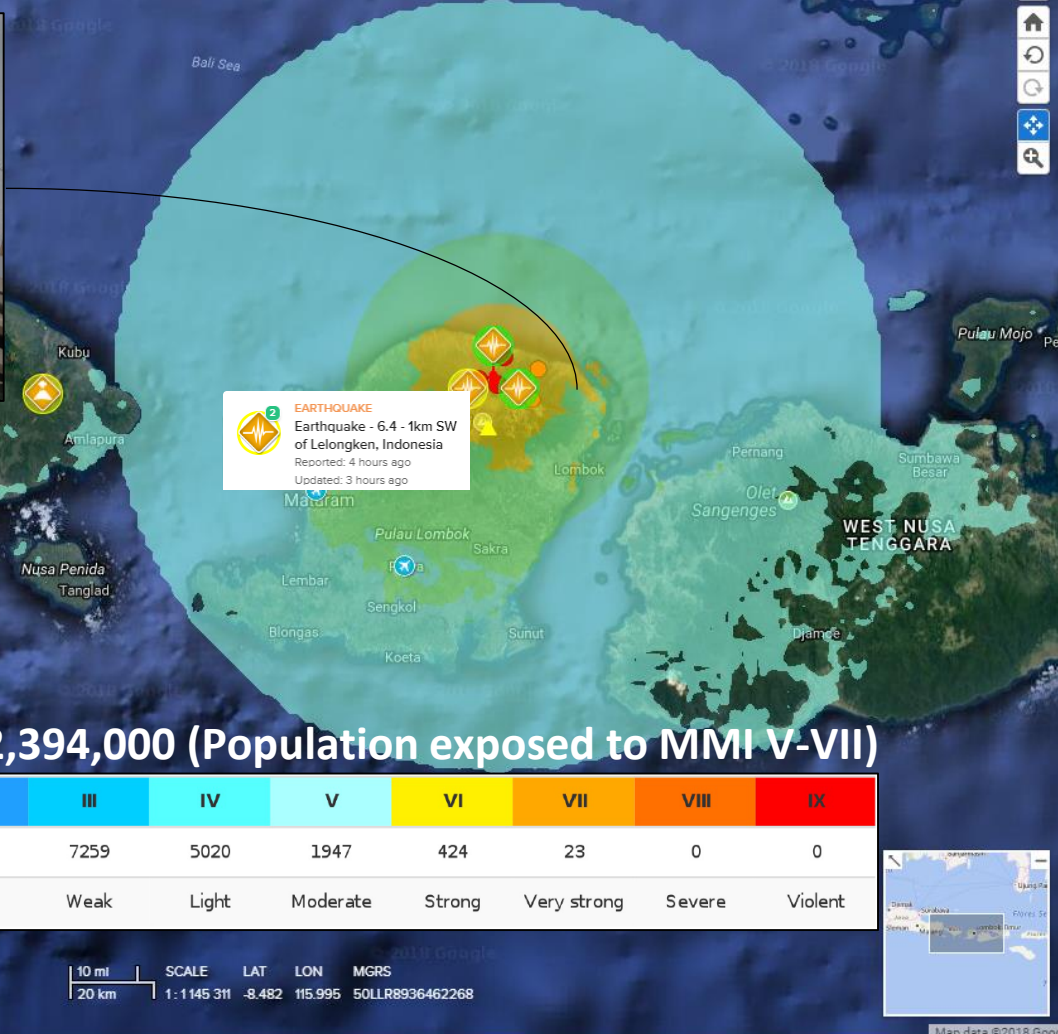




RPH sambella
49°
07/29/2018 06:58:53



EARTHQUAKE
Earthquake - 6.4 - 1km SW
of Lelongken, Indonesia
Reported: 4 hours ago
Updated: 3 hours ago

Total people of concern: 2,394,000 (Population exposed to MMI V-VII)

Intensity	II	III	IV	V	VI	VII	VIII	IX
People Exposed (x 1000)	32	7259	5020	1947	424	23	0	0
Perceived Shaking	Weak	Weak	Light	Moderate	Strong	Very strong	Severe	Violent



10 mi | 20 km | SCALE | LAT: -8.482 | LON: 115.995 | MGRS: 50LLR8936462268



Map data ©2018 Google

Summary as of 30 July 2018, 06:00 hrs (UTC +7): First 24 hours M 6.4 Lombok Earthquake, Indonesia

- 1) A M 6.4 Earthquake occurred on 29 July 2018 05.47 hrs (UTC +7), with epicenter at a depth of 24 km and located at 8.4 S & 116.5 E or around 47 km northeast of Mataram City, West Nusa Tenggara Province, Indonesia ([BMKG](#)). No tsunami generated by this event, until 22:00 (UTC +7), 213 aftershocks were recorded ([BMKG](#)), and a [landslide](#) was observed in Mount Rinjani. The event caused by the activity of Flores Back Arc Thrust, triggered by deformation with thrust fault mechanism ([BMKG](#)).
- 2) AHA Centre Disaster Monitoring & Response System ([DMRS](#)) triggered "Watch" Alert.
- 3) The earthquake felt in Lombok, Bali and Sumbawa Island with the reported intensity around II-VII MMI ([BMKG](#); [BNPB](#)), with a total population exposed of around 14 million.
- 4) **Rapid assessment** is currently undertaken by municipalities Local Disaster Management Agency (BPBDs), BPBD West Nusa Tenggara Province and BPBD Bali Province and reported to BNPB: 15 people died (confirmed, including 1 Malaysian citizen), at least 40 injured, 6,237 displaced, more than 1,000 houses damaged in four municipalities. **See page 2 for details.**
- 5) **Actions taken:** Local and national government and non-government organizations started search & rescue, health assistance, setup of command post and evacuation camp and distribution of relief items.
- 6) At this stage, **there is no indication that international assistance will be requested or welcomed.**
- 7) The next AHA Centre Flash Update will be issued once additional information become available.

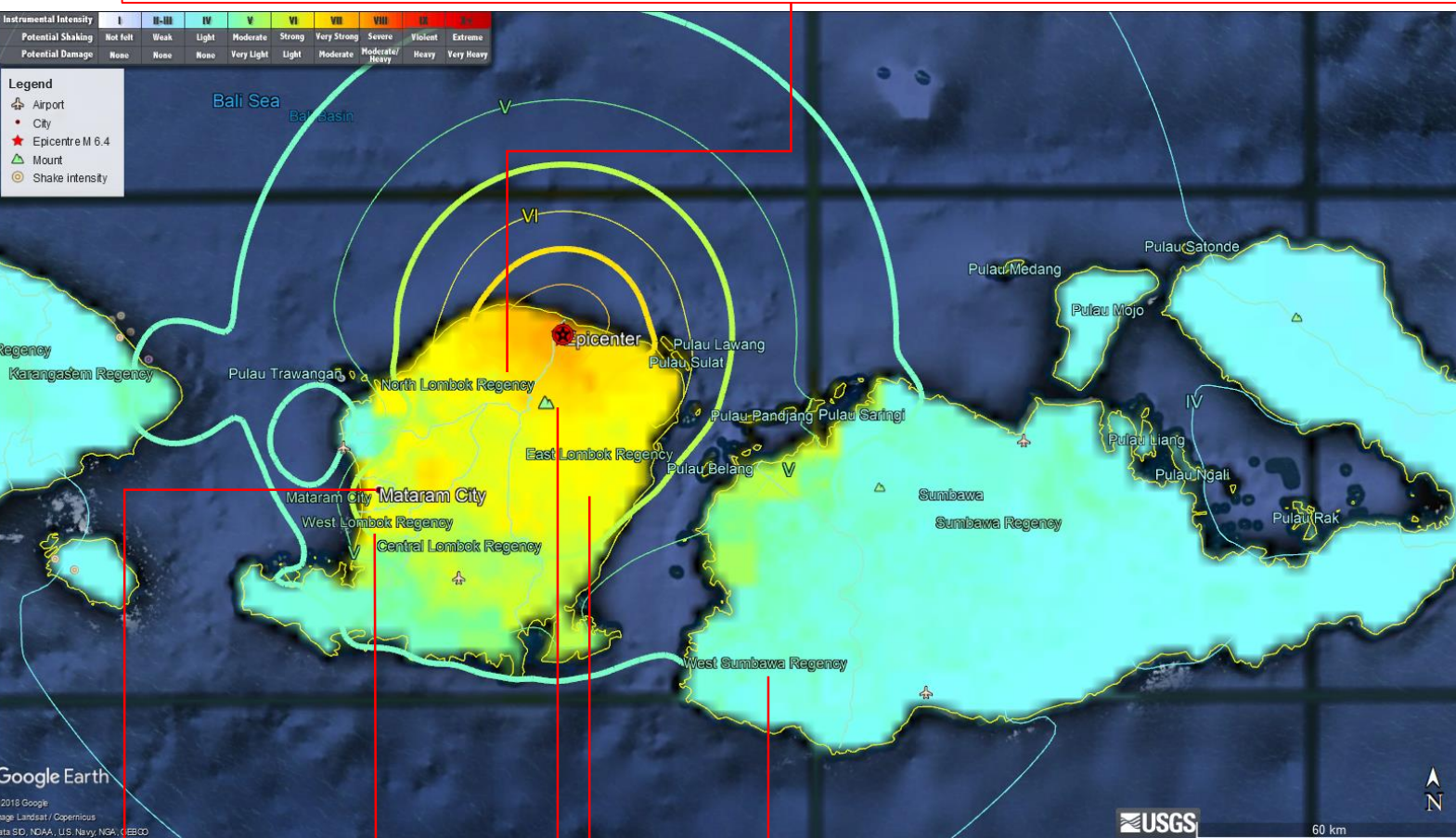
Casualties, Damages, Impacts & Emergency Response Activities by Cities/Regencies

Correct as of 30 July 2018, 06:00 hrs UTC +7,

Consolidated from: EOC call with BNPB, Indonesian Red Cross, Muhammadiyah Disaster Management Center, ACT

North Lombok Regency

4 died 38 injured 6,237 displaced 41 houses heavy damage
74 houses moderate damage 255 houses light damage 4 mosques damage
3 temples damaged 2 school damaged 2 bridges damage
Incident Command Post has been setup at Bayan District
3 IDPs camp have been setup at Sambielen field, Loloan field and Ancak field



West Lombok Regency
1 house heavy damage
1 house moderate damage

West Sumbawa Regency
2 houses damage

Mataram City
2 houses damage

Mount Rinjani

- Landslide reported
- 300 hikers still trapped

East Lombok Regency
11 died 151 injured
398 houses heavy damage
260 houses light damage
Incident Command Post has been setup at Sembalun District
3 field hospitals & IDPs camp have been setup

Casualties, Damages, Impacts & Emergency Response Activities by Cities/Regencies

Correct as of 30 July 2018, 06:00 hrs UTC +7,

Consolidated from: EOC call with BNPB, Indonesian Red Cross, Muhammadiyah Disaster Management Center, ACT

Organizations	West Nusa Tenggara Province BPBD & LGU agencies	North Lombok Regency BPBD & LGU agencies	East Lombok Regency BPBD & LGU agencies	Indonesian Red Cross	Muhammadiyah Disaster Management Center	ACT
Emergency Response Activity / Relief items distributed						
Incident Command Post setup		1	1			
IDPs camp setup	2 tents	3	3			
Rapid Assessment	v	v	v	v	v	v
Medical teams	v	v	v	v	v	v
Food	318 RTE meals					
Water	275 boxes					
Field hospital / Medical service			3		2	
Family kit				250		
Hygiene kit				250		
Tarpaulin				500		
Blanket				250		
Body bag				100		
Water tank				2		
Ambulance				2		

Urgent needs

Medical teams	Medical supplies (e.g. stretchers)	Medicine
Kids ware	Blanket	Tents
Ready-to-eat meals (including for infant)		

Notes on Emergency Response Activities

1. National Disaster Management Authority (BNPB) and Ministry of Health dispatch team to support further assessment.
2. National / Local NGOs are responding and several crowd-source fund have been established
3. Based on the available data to this stage and in comparison to disaster impact data and the subsequent emergency response operations of M 6.1 Banten Earthquake (23 January 2018) and M 6.9 Southwest of Java Earthquake (15 December 2017), potentially local and national resources in Indonesia (government and non-government combined) are sufficient for responding to the M 6.4 Lombok Earthquake of 29 July 2018.
4. Additional updates will be provided once latest information become available.

DATA SOURCES

ASEAN Disaster Monitoring & Response System (DMRS); Indonesia: BNPB, BPBD Bali, BPBD West Nusa Tenggara, BMKG, PVMBG-ESDM; Indonesian Red Cross, MD/MC, ACT Pacific Disaster Center (PDC Global); US Geological Services (USGS); Various news agencies

DISCLAIMER

The AHA Centre was established in November 2011 by the Association of Southeast Asian Nations (ASEAN) Member States to facilitate cooperation and coordination among Member States, relevant agencies of the United Nations and international organisations in disaster management and humanitarian assistance.

The use of boundaries, geographic names, related information and potential considerations for response are for reference, not warranted to be error free or implying official endorsement from ASEAN Member States.

© 2018 AHA Centre. All rights reserved. You are receiving this email because you are registered in our distribution list.

Our mailing address is: AHA Centre, GRAHA BNPB 13th Floor, Jl. Raya Pramuka Kav. 38, Jakarta 13120 Indonesia