

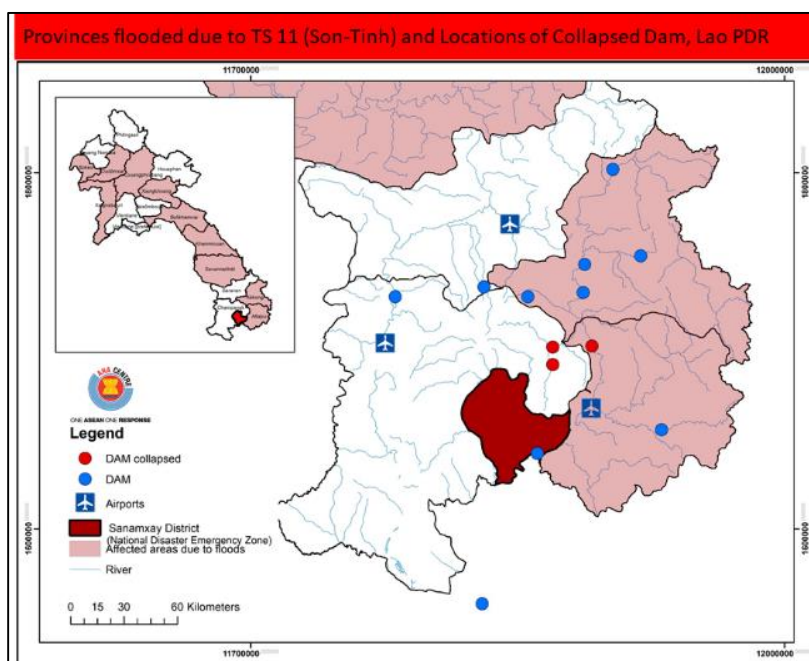
*This situation update is provided by AHA Centre for the use of ASEAN Member States and relevant parties among ASEAN Member States. The information presented is collected from various sources including but not limited to ASEAN Member States, UN, IFRC, INGOs, & News Agencies.*

## 1. HIGHLIGHTS

- Due to monsoon season and heavy rainfall brought by TS 11 (Son-Tinh), 349 villages in 41 districts of 10 provinces are flooded from 18-19 July 2018.
- On 24 July 2018, collateral flash-flood occurred in Attapeu Province due to water discharge from Xepien-Xenamnoy Dam, affecting downstream villages with more than 1,000 families have been evacuated.
- The AHA Centre received Initial Report/Situation Update No. 1 on the incident from NDMC, Department Social Welfare, Ministry of Labor and Social Welfare, Lao PDR on 24 July 2018, and immediately released Situation Update No. 1 to National Focal Points of ASEAN Member States on 24 July 2018, 2000 hrs (Jakarta time).
- Coordination meeting has been held remotely between AHA Centre, NDMC-Department of Social Welfare and ASEAN Secretariat for preparation of emergency response operations, and subsequently AHA Centre Emergency Operations Centre (EOC) has elevated its status to "RED" as of 25 July 2018, 1420 hrs (UTC +7).
- Government of Lao PDR through NDMC, Department of Social Welfare, has welcomed assistance from the AHA Centre.
- The AHA Centre is sending In-Country Liaison Team (ICLT) to establish coordination with the Government of Lao PDR, slated to arrive in Vientiane on 25 July 2018, and to coordinate with the NDMC, Department of Social Welfare for ASEAN collective response to the disaster.

## 2. SUMMARY OF EVENTS & FORECAST

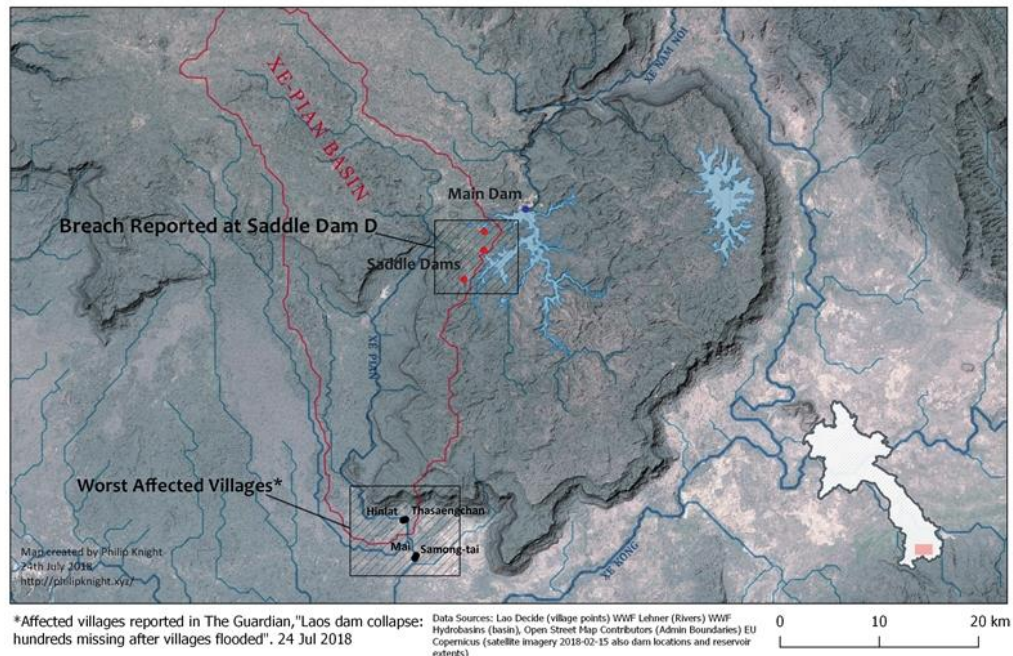
- Heavy rainfall brought by TS 11 (Son-Tinh) on 18-19 July 2018 has caused flooding in 349 villages, 41 districts, in the following provinces: Attapeu, Savannakhet, Khammouan, Xayabuly, Bolikhamxay, Luang Prabang, Bokeo, Sekong, Xiengkhouang, Oudomxay. See figure on the right.



- b. On 24 July 2018, collateral flash-flood occurred in Attapue Province caused by water discharge from Xepien-Xenamnoyu Dam, i.e. at Saddle Dam D, due to heavy rainfall along Xe Pian River (WLE, 2018). [Mekong River Commission](#) has reported significant increase of water levels in Mekong River area due to TS Son-Tinh on 24 July 2018.

Dataset on the Dams of the Irrawaddy, Mekong, Red and Salween River Basins. Vientiane, Lao PDR  
CGIAR Research Program on Water, Land and Ecosystems - Greater Mekong

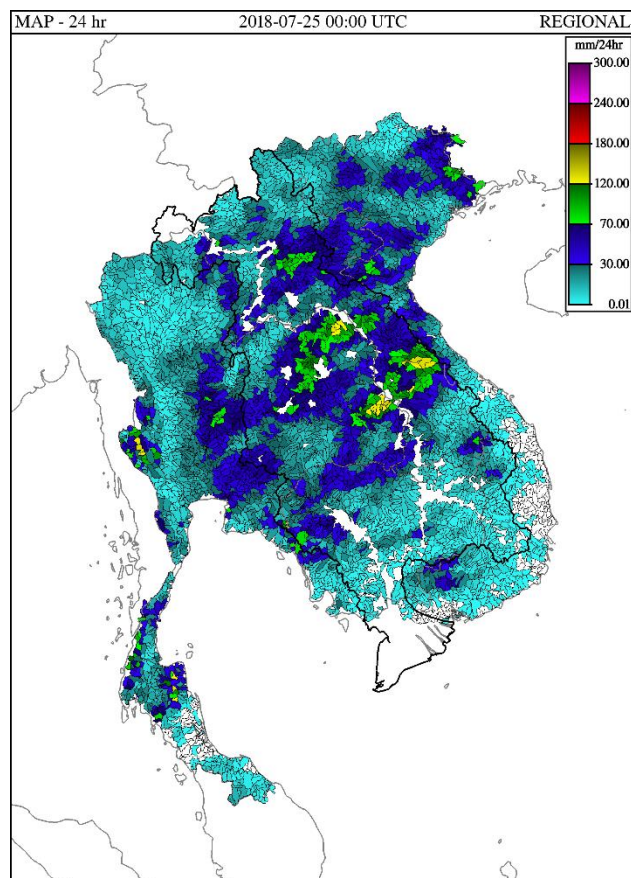
**Xe-Namnoi Reservoir Saddle Dam D Breach Causes Widespread Flooding in Xe-Pian River Basin**



- c. ASEAN Specialised Meteorological Centre ([ASMC](#)) provided subseasonal weather outlook for the period of 16-31 July 2018. Above-average rainfall is still expected for the northern ASEAN region.

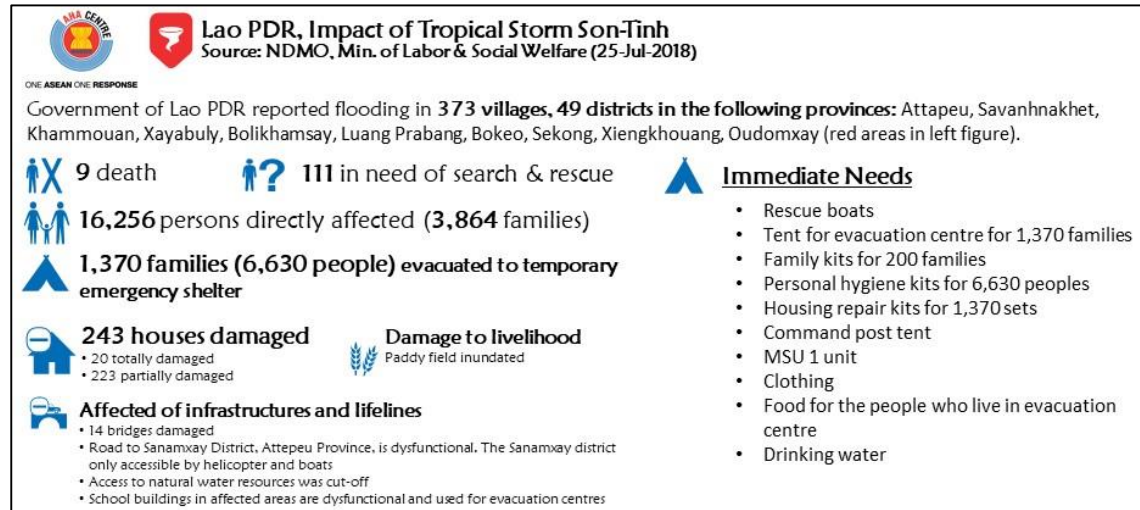
- d. General public and humanitarian partners are advised to monitor [Mekong River Commission Flash Flood Guidance for 1 hour, 3 hours and 6 hours in Lao PDR](#).

The last 24 hourly Mean Areal Precipitation (MAP) from 00:00 UTC (07:00 AM local time) on 23 July 2018 to 00:00 UTC (07:00 AM local time) on 24 July 2018. The heavy rainfall occurred in some areas in Lao PDR and Cambodia due to the last 24 hours (right figure).

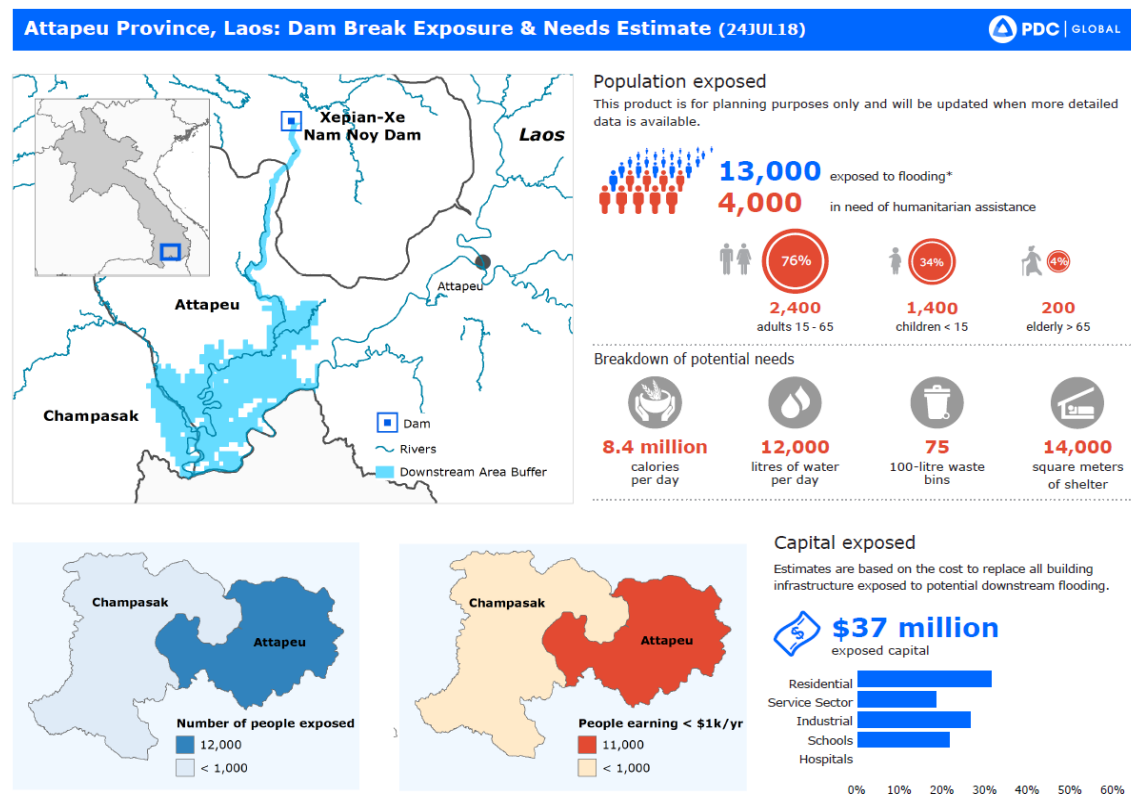


### 3. ASSESSMENT OF DAMAGE, IMPACT, AND HUMANITARIAN NEEDS

The flash flood has inundated eight villages: Ban Mai, Ban HinLath, Ban ThaSengchan, Ban Thahintai, Ban Sanong, Ban Thae, Ban Phonsa-ath and Ban Nongkhae; Sanamxay District, Attapeu Province. As of 25 July 2018, the impact in most affected areas and humanitarian needs indicated by Government of Lao PDR are as follows:



Interim analysis on initial exposure and needs estimate in Attapeu Province; prepared by Pacific Disaster Center for planning purposes (as of 24 July 2018).



http://www.pdc.org | response@pdc.org | © 2015-2018 Pacific Disaster Center (PDC) - All rights reserved. Commercial use is permitted only with explicit approval of PDC.  
Data: PDC, NWS, TAOS forecasted by Kinetic Analysis Corporation. \* Population exposure, capital exposure, and key needs values are calculated using PDC's All-Hazards Impact Model (experimental) and based on exposure to the general downstream area.





## 4. ACTIONS TAKEN AND RESOURCES MOBILISED

### Response by Government of Lao PDR and in-country organizations

- a. Provincial Committee on Disaster Prevention and Control Committee was activated with military and police assisting evacuation of villagers. Search and Rescue teams were deployed with helicopters and rescue boats.
- b. Prime Minister Office has declared Sanamxay District, Attapeu Province (approx. 829 km from Vientiane), as a 'National Disaster Emergency Zone'.
- c. Prime Minister and Chair of Disaster Prevention and Control Committee with members visiting Attapeu Province with relief items on 24 July 2018.
- d. The National Focal Point meeting took place on 24 July 2018.
- e. [Vientiane 1623](#) is on the ground to assist with search and rescue operations.

### Response by the AHA Centre and ASEAN Member States

- a. AHA Centre is sending In-Country Liaison Team (ICLT) for establishing coordination with Government of Lao PDR, to be arrived in Vientiane on 25 July 2018.
- b. ASEAN Emergency Response and Assessment Team (ERAT) is on standby for deployment and can be activated when requested.
- c. The AHA Centre organised a video conference with the NDMC of Lao PDR to discuss potential response to Lao PDR by the AHA Centre on 25 July 2018, 1330 hrs (UTC +7).
- d. The AHA Centre organised a video conference with the ASEAN Member States to brief on the situation and consolidate ASEAN response to Lao PDR, on 25 July 2018, 1500 hrs (UTC +7).
- e. AHA Centre continues to collect more information from various organisations, including from the CGIAR Research Program on WLE Mekong, Pacific Disaster Center, and others.
- f. Based on teleconference with ASEAN Member States, several bilateral assistance is being offered
  - Government of Malaysia is on standby to expedite the process of ASEAN relief items mobilization from Subang, Malaysia.
  - Government of Thailand is dispatching officials and first-batch of relief items to Lao PDR on 25 July 2018, expected to arrive on 26 July 2018. Thirty rescuers are being dispatched to Lao PDR to support rescue process. Thailand Embassy has offered to open a bank account for receiving donations.
  - Government of Brunei Darussalam, Myanmar, Singapore and Philippines are putting their ASEAN-ERAT members on stand-by for potential response.

### Response by humanitarian partners

- a. AHA Centre is in contact with various partners in order to seek potential support, including with the US Government, DHL, *Telecoms Sans Frontiere*, MapAction and Mercy Malaysia for potential support to Government of Lao PDR.
- b. The [UN Secretary-General](#) has expressed its condolence due to the loss of life and significant damage in Attapeu Province, Lao PDR, and ready to provide support to the national rescue and relief effort. The [UN Resident Coordinator](#) in Lao PDR has offered their assistance to the Government of Lao PDR through its UN Residence Coordinator.
- c. Mercy Malaysia is planning to dispatch a team, ETA 27 July 2018, to support with health and WASH sectors assessment. Mercy Malaysia is in contact with AHA Centre ICLT.



- d. The Red Cross is mobilising its volunteers to assist with the relief operations for the dam collapse. The Lao Red Cross will be sending 200 sets of clothes and 30 sets of blankets. A purification unit is also being readied. The IFRC is also ready to send non-food items (including tarpaulin and hygiene kits) from the regional warehouse in Kuala Lumpur. At the same time the Thai Red Cross will dispatch 1,400 food relief kits and the IFRC Country Cluster Support team to help with in-country coordination. IFRC may discuss with the NDMC of Lao PDR whether Emergency Appeal will be sought by the government ([IFRC Information Bulletin](#)).

## 5. RECOMMENDATIONS AND PLANNED ACTIONS

- a. Immediate needs, for consideration of humanitarian response
- |                                 |                     |
|---------------------------------|---------------------|
| Rescue boats                    | Family kits         |
| Family tents                    | Housing repair kits |
| Personal hygiene kits           | Water               |
| Food (e.g. high energy biscuit) |                     |
- b. AHA Centre is exploring the possibilities of deploying ASEAN relief items from the Subang Warehouse in Malaysia based on the assessment of needs from the NDMC, Department of Social Welfare, Lao PDR. Another alternative is to carry out procurement of relief items locally or from neighboring countries.
- c. Information management
- Continue to support the NDMC of Lao PDR by providing latest satellite imagery analysis from the EOC. AHA Centre is in contact with MapAction, Sentinel Asia and Pacific Disaster Center for remote support on information management.

---

Prepared by:

Disaster Monitoring & Analysis Unit, AHA Centre

- 1) Qing Yuan Pang, Assistant Director for Disaster Monitoring and Analysis

[qing.pang@ahacentre.org](mailto:qing.pang@ahacentre.org)

- 2) Mizan Bustanul Fuady Bisri, Disaster Monitoring & Analysis Officer

[mizan.bisri@ahacentre.org](mailto:mizan.bisri@ahacentre.org)

## ABOUT THE AHA CENTRE

The AHA Centre - ASEAN Coordinating Centre for Humanitarian Assistance on disaster management - is an inter-governmental organisation established by 10 ASEAN Member States – Brunei Darussalam, Cambodia, Indonesia, Lao PDR, Malaysia, Myanmar, Philippines, Singapore, Thailand and Viet Nam - to facilitate the cooperation and coordination among ASEAN Member States and with the United Nations and international organisations for disaster management and emergency response in the region.

The ASEAN Coordinating Centre for Humanitarian Assistance on disaster management (AHA Centre),

Graha BNPB 13<sup>th</sup> Floor, JL Raya Pramuka Kav 38, East Jakarta, 13210, Indonesia

Phone: +62-21-210-12278 | [www.ahacentre.org](http://www.ahacentre.org) | email: [info@ahacentre.org](mailto:info@ahacentre.org)

