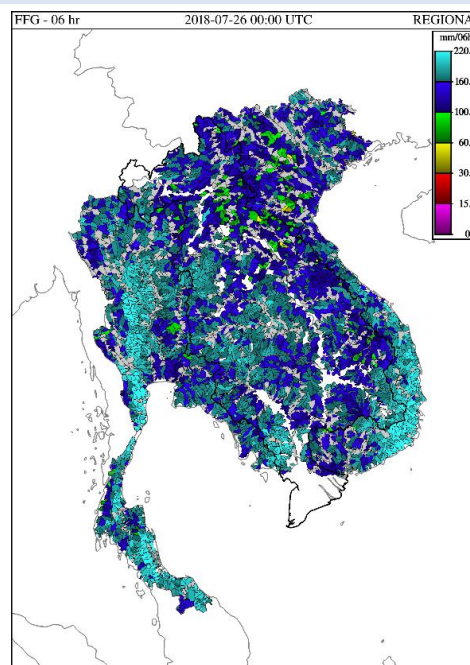


## 1. HIGHLIGHTS

- a. Due to monsoon season and heavy rainfall brought by TS 11 (Son-Tinh), 349 villages in 41 districts of 10 provinces are flooded from 18-19 July 2018.
- b. On 24 July 2018, collateral flash-flood occurred in Attapeu Province due to water discharge from Xepien-Xenamnoyu Dam, affecting downstream villages with more than 1,000 families have been evacuated.
- c. Government of Lao PDR through NDMC, Department of Social Welfare, Ministry of Labour & Social Welfare and Ministry of Foreign Affairs, has welcomed assistance from the AHA Centre.
- d. The AHA Centre In-Country Liaison Team (ICLT) is on the ground from 25 July 2018 and established coordination with the NDMC, Department of Social Welfare of Lao PDR, for ASEAN collective response to the disaster.
- e. The AHA Centre is preparing the mobilization of ASEAN relief items in two batches, with estimated date of arrival on 27 and 28 July 2018, and supporting the NDMC, Department of Social Welfare of Lao PDR, on information management.
- f. [Secretary General of ASEAN expressed his condolence](#) on the impact of TS Son-Tinh, on 25 July 2018.

## 2. SUMMARY OF EVENTS & FORECAST

- a. Heavy rainfall brought by TS 11 (Son-Tinh) on 18-19 July 2018 has caused flooding in 349 villages, 41 districts, in the following provinces: Attapeu, Savannakhet, Khammouan, Xayabuly, Bolikhamsay, Luang Prabang, Bokeo, Sekong, Xiengkhouang, Oudomxay.
- b. On 24 July 2018, collateral flash-flood occurred in Attapeu Province caused by water discharge from Xepien-Xenamnoyu Dam, i.e. at Saddle Dam D, due to heavy rainfall along Xe Pian River (WLE, 2018). [Mekong River Commission](#) has reported significant increase of water levels in Mekong River area due to TS Son-Tinh on 24 July 2018.
- c. General public and humanitarian partners are advised to monitor [Mekong River Commission Flash Flood Guidance for 1 hour, 3 hours and 6 hours in Lao PDR](#). The right figure indicates 6 Hourly Flash Flood Guidance (FFG) on 26 July 2018 at 0700 hrs (UTC+7). Some areas may experience flash flood within next six hours in Viet Nam and Lao PDR.
- d. ASEAN Specialised Meteorological Centre ([ASMC](#)) provided subseasonal weather outlook for the period of 16-31 July 2018. Above-average rainfall is still expected for the northern ASEAN region.

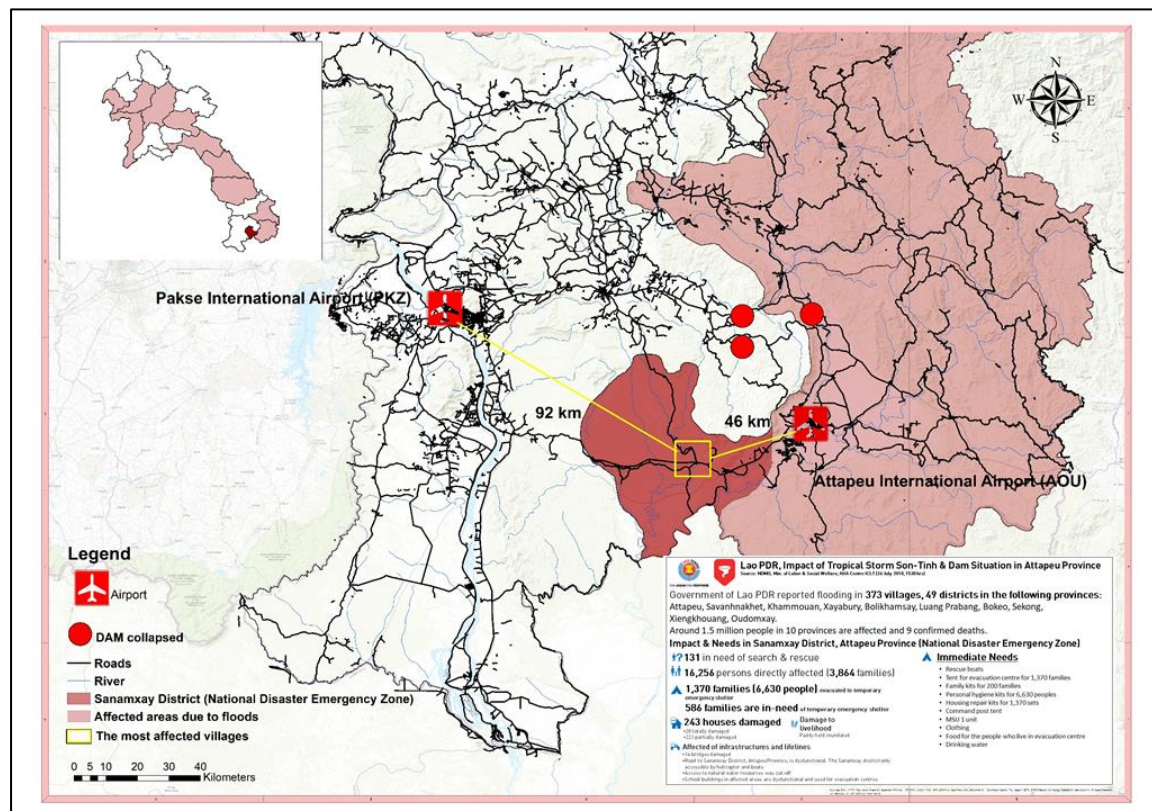


### 3. ASSESSMENT OF DAMAGE, IMPACT, AND HUMANITARIAN NEEDS

Government of Lao PDR reported flooding in **373 villages, 49 districts in the following provinces:** Attapeu, Savannakhet, Khammouan, Xayabury, Bolikhamxay, Luang Prabang, Bokeo, Sekong, Xiengkhouang, Oudomxay. In 10 provinces, around 1.5 million people are affected, 9 confirmed deaths.

The flash flood inundated eight villages: Ban Mai, Ban HinLath, Ban ThaSengchan, Ban Thahintai, Ban Sanong, Ban Thae, Ban Phonsa-ath and Ban Nongkhae, in Sanamxay District, Attapeu Province. The 'National Disaster Emergency Zone' declared for Sanamxay District, Attapeu Province. NDMC, Department of Social Welfare and AHA Centre ICLT reported the following impact in the district:

- 131 in-need of search and rescue
- 16,256 persons (3,864 families) directly affected
- 6,630 persons (1,370 families) evacuated to temporary emergency shelter zone
- 586 families in-need of temporary emergency shelters
- In total 243 houses damaged: 20 totally damaged, 223 partially damaged
- Paddy-field in Sanamxay District is inundated
- Impact to infrastructure:
  - 14 bridges damaged
  - Road to Sanamxay District cut-off
  - Access to natural water resources cut-off
  - School buildings in affected areas are used for other purposes, i.e. as evacuation centre



## 4. ACTIONS TAKEN AND RESOURCES MOBILISED

### Response by Government of Lao PDR and in-country organizations

- a. Prime Minister Office has declared Sanamxay District, Attapeu Province (approx. 829 km from Vientiane), as a 'National Disaster Emergency Zone'.
- b. A joint Press Conference was held and attended by Minister of Energy & Power, Minister of Labour & Social Welfare, and Minister of Public Health on 26 July 2018, 0900 hrs (UTC+7)  
(upper photo: AHA Centre, ICLT).
- c. NDMC, Department of Social Welfare, in Vientiane, continues to receive donation, which will be mobilized to the affected areas using military aircraft  
(lower photo: AHA Centre, ICLT)



- d. The Government of Lao PDR advised the incoming international assistance that the entry point of relief items to be at the Vientiane, Wattay International Airport (VTE), due to congestion at the Pakse international airport (PKZ).
- e. [Lao Telecom](#) set up a free telephone service center for flood victims in Xieng Nhan district, Sapienpong province, to contact relatives and send news to relatives and relatives of the floods.

### Response by the AHA Centre

- a. The AHA Centre In-Country Liaison Team (ICLT) has arrived in Vientiane on 25 July 2018 and established coordination with the National Focal Point at NDMC, Department of Social Welfare of Lao PDR, for ASEAN collective response to the disaster.
- b. The AHA Centre is preparing for the mobilization of ASEAN relief items from regional stockpiles in Subang, Malaysia, in two batches. The first batch will arrive in Lao PDR on 27 July 2018, and the second batch on 28 July 2018

The ASEAN relief items package consists of the following (right photo):

- Family kits
- Family tents
- Mobile Storage Unit
- Shelter repair kits
- Mosquito nets
- Personal hygiene kits
- Jerry cans
- Aluminum boats





- c. The AHA Centre is providing information management and telecommunication support to EOC of NDMC, Department of Social Welfare, and continues to collect more information from various organisations, including from the CGIAR Research Program on WLE Mekong, Pacific Disaster Center, and others.
- d. Government of Malaysia has provided USD 20,000 for procurement of rescue boats by the AHA Centre to help with search and rescue. Government of Malaysia is also supporting the relief items deployment. The AHA Centre is coordinating with Government of Malaysia on the potential use of the airplanes from the Royal Malaysian Air Forces.
- e. ASEAN Web-EOC is activated and provided coordination space and information sharing among ASEAN responders.
- f. ASEAN Emergency Response and Assessment Team (ERAT) is on standby for deployment and can be activated when requested.

#### **Response by ASEAN Member States**

##### **a. Thailand**

On 25 July 2018, Thailand dispatched the following relief items:

- 2,000 unit of Towel
- 16,800 bottles of drinking water
- 2,880 ready to eat snacks
- 20 boxes of medicine (100 unit in each box)
- 5,000 units of dry food (rice and canned goods)
- 1,000 unit of personnel tent

In addition, Thailand is also in the process of procuring 20 million THB of relief items. Thailand is also putting rescue boats on stand-by (3 flat boats and 2 rubber boats), ambulance, as well as mobile kitchen.

##### **b. Singapore**

Singapore dispatched the following relief items and is arriving 26 July 2018 evening.

- 71 family tents
- 120 dynamo lights
- 1 set of medical supplies
- 5 rubber dinghies boats, fits for 12 persons
- 7800 pack of food ration
- 40 cartons of water (each 24 bottles @500ml)

#### **Response by humanitarian partners**

- a. AHA Centre is in contact with various partners in order to coordinate potential support, including with the US Government, International Federation of Red Cross, DHL, *Telecoms Sans Frontiere*, MapAction and Mercy Malaysia for potential support to Government of Lao PDR.
- b. The [UN Secretary-General](#) has expressed its condolence due to the loss of life and significant damage in Attapeu Province, Lao PDR, and is ready to provide support to the national rescue and relief effort. The [UN Resident Coordinator](#) in Lao PDR has offered their assistance to the Government of Lao PDR through its UN Residence Coordinator.
- c. [UNICEF Lao PDR Office](#) is dispatching assistance for around 1,500 households in the form of drinking water, sanitation and hygiene supplies.
- d. [The Lao Red Cross](#) has distributed clothing, food, and drinking to affected households. It is also preparing to deliver 2,500 kilogram of rice, as well as a number of non-food items, such as tarpaulin, blankets, and water purification unit. These items are mobilised by utilising the IFRC Disaster Relief and Emergency Fund (DREF).
- e. [Save the Children](#) expressed their intention to provide assistance to affected families by providing baby kits and household kits, as well as other supports to mothers.



## 5. RECOMMENDATIONS

- a. As of 26 July 2018, Government of Lao PDR, through the NDMC, Department of Social Welfare confirmed the following immediate needs:
    - Portable toilets
    - Mobile Storage Unit (MSU)
    - Aluminum boats
    - Family tents
  - b. For consideration by humanitarian partners, due to congestion at the Pakse international airport (PKZ), Government of Lao PDR has advised the entry point of relief items to be at the Vientiane, Wattay International Airport (VTE).
  - c. Ministry of Foreign Affairs is appointed as a focal point for liaising of international assistance.
  - d. The AHA Centre will provide further situation updates once information becomes available.
- 

Prepared by:

AHA Centre Emergency Operations Centre and  
EOC of NDMC, Department of Social Welfare, Ministry of Labour and Social Welfare

1) Qing Yuan Pang, EOC Team Leader, [qing.pang@ahacentre.org](mailto:qing.pang@ahacentre.org)

2) Mizan Bustanul Fuady Bisri, Planning Section Chief, [mizan.bisri@ahacentre.org](mailto:mizan.bisri@ahacentre.org)

### ABOUT THE AHA CENTRE

The AHA Centre - ASEAN Coordinating Centre for Humanitarian Assistance on disaster management - is an inter-governmental organisation established by 10 ASEAN Member States – Brunei Darussalam, Cambodia, Indonesia, Lao PDR, Malaysia, Myanmar, Philippines, Singapore, Thailand and Viet Nam - to facilitate the cooperation and coordination among ASEAN Member States and with the United Nations and international organisations for disaster management and emergency response in the region.

The ASEAN Coordinating Centre for Humanitarian Assistance on disaster management (AHA Centre),

Graha BNPB 13<sup>th</sup> Floor, JL Raya Pramuka Kav 38, East Jakarta, 13210, Indonesia  
Phone: +62-21-210-12278 | [www.ahacentre.org](http://www.ahacentre.org) | email: [info@ahacentre.org](mailto:info@ahacentre.org)

