

*This situation update is provided by AHA Centre for the use of ASEAN Member States and relevant parties among ASEAN Member States. The information presented is collected from various sources including but not limited to ASEAN Member States, UN, IFRC, INGOs, & News Agencies.*

### 1. HIGHLIGHTS

- a. Due to monsoon season and heavy rainfall brought by TS 11 (Son-Tinh), 349 villages in 41 districts of 10 provinces are flooded from 18-19 July 2018. On 24 July 2018, collateral flash-flood occurred in Attapeu Province due to water discharge from Xepien-Xe Nam Noyu Dam, affecting more than 16,000 people.
- b. Based on latest satellite observation on Sanamxai District (29 July 2018), about 42.36 sqkm is still flooded, with 32.53 sqkm agricultural area. Within the flooded area, 302 buildings and 31.5 km road length submerged in water. Should wet weather persist, flood waters may not recede as quickly as expected.
- c. A second batch In-Country Liaison Team (ICLT) from the AHA Centre has arrived in Vientiane on 1 August 2018 for continuing coordination of international assistance, information management and relief items management.
- d. To further enhance a coordinated assistance to Lao PDR, Focal Point for Offer of Assistance, Dept. of Social Welfare, has requested the AHA Centre to facilitate offer of assistance from humanitarian community. The AHA Centre stands ready to facilitate coordination of incoming relief items. Humanitarian partners are advised to use [SASOP Form "Offer of Assistance"](#) and directed the offer through the AHA Centre.
- e. Department of Social Welfare has established the Mobile Storage Unit (MSU) in Sanamxai District Attapeu Province, which was sent by AHA Centre. The availability of the MSU will enhance the capacity of relief items storage in the most affected areas.
- f. Based on the current gaps analysis, the quantity of some relief items have exceeded the number of people in-needs in Attapeu Province. Accelerating transportation from Vientiane and Pakse remains a challenge. Some surplus relief items may be diverted to other affected provinces, outside of the "national disaster emergency zone" in Sanamxai District, Attapeu Province.



Coordination Meeting AHA Centre & the IFRC (31 July 2018)

### 2. SUMMARY OF EVENTS & FORECAST

- a. Heavy rainfall brought by TS 11 (Son-Tinh) on 18-19 July 2018 has caused flooding 349 villages, 41 districts, in the following provinces: Attapeu, Savahnakhet, Khammouan, Xayabuly, Bolikhamxay, Luang Prabang, Bokeo, Sekong, Xiengkhouang, Oudomxay. On 24 July 2018, collateral flash-flood occurred in Attapeu

Province due to discharge from Xepien-Xenamnoyu Dam, due to [compromised safety](#) of Saddle Dam D and heavy rainfall along Xe Pian River.

- b. General public and humanitarian partners are advised to monitor [Mekong River Commission Flash Flood Guidance for 1 hour, 3 hours and 6 hours in Lao PDR](#). According the most recent forecast (1 August) , additional floods may occurred in southern part of Lao PDR.
- c. As the region is experiencing effect of Southwest Monsoon marked by heavy rainfall and strong winds between early June and late September/early October. Risk of exposure to flash floods with likelihood of localised landslides increases. Please refer to Potential Landslide Exposure in northern ASEAN Region (PDC).

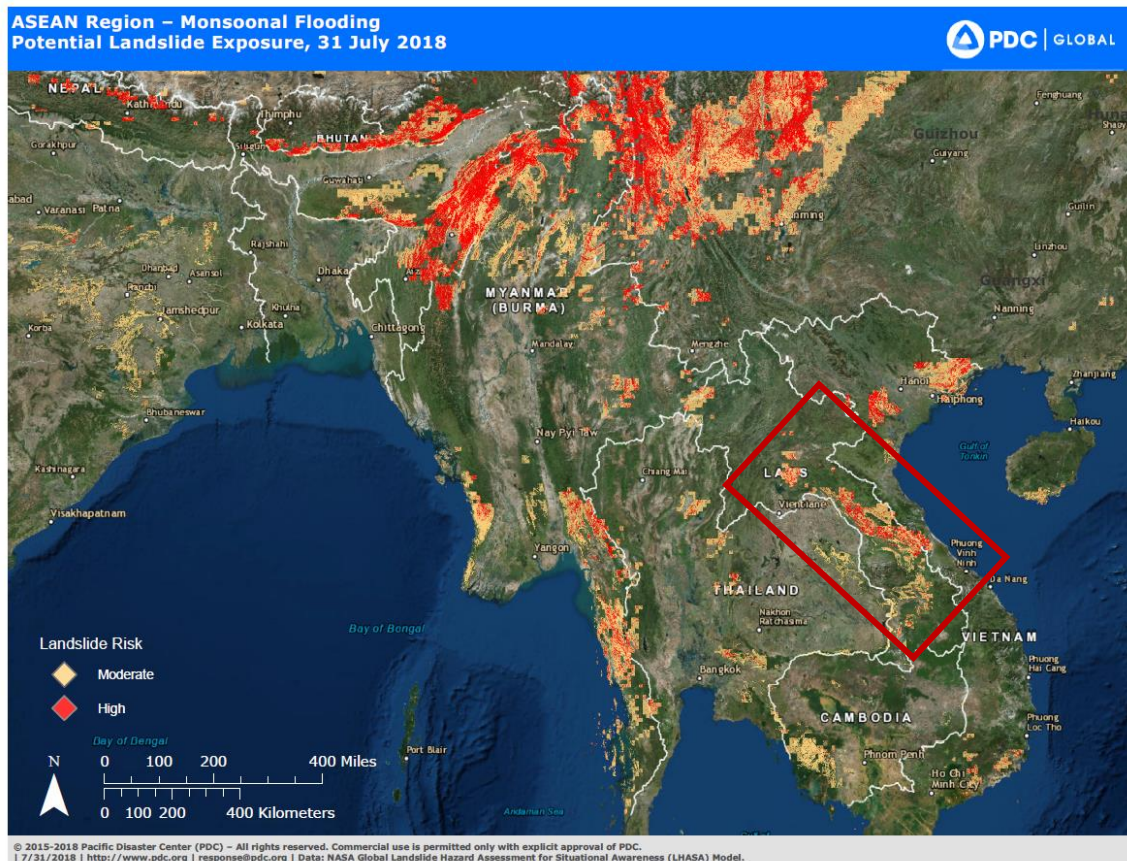


Figure 1. ASEAN Region Monsoonal Flooding & Potential landslide Exposure (PDC)

### 3. ASSESSMENT OF DAMAGE, IMPACT, AND HUMANITARIAN NEEDS

- a. Among the 10 provinces affected by flooding in Lao PDR, national focus of response is on Sanamxai District, Attapeu Province, as the 'national disaster emergency zone'. Until 1 August 2018, 120 people remains missing ([Lao News Agency](#)).
- b. Based on the poverty indicators, 8 out of the 10 affected provinces in Lao PDR are having high concentration of population below Lao PDR national poverty lines.
- c. Based on satellite imagery analysis ([IWMI](#)), 76.7% of the inundated areas on 29 July 2018 are agricultural area (32.53 sqkm. In addition, current inundation zone submerged 302 buildings and 31.5 km roads. In details, the number of villages inundated is decreasing. At the current rate, all waters should be gone by 4 August 2018.



- d. According to Department of Social Welfare, and AHA Centre ICLT, the number of people in the affected area of Sanamxai District is as follows (correct as of 1 August 2018):

People directly affected	: 16,256
Family directly affected	: 3,864
People displaced & evacuated	: 5,946
Families displaced & evacuated	: 1,193
Family in-need of emergency shelter	: 2,494

Pre and Post dam break scenario in Attapeu province (Lao PDR) using Sentinel-1 Satellite Data (17, 25 and 29 July 2018)

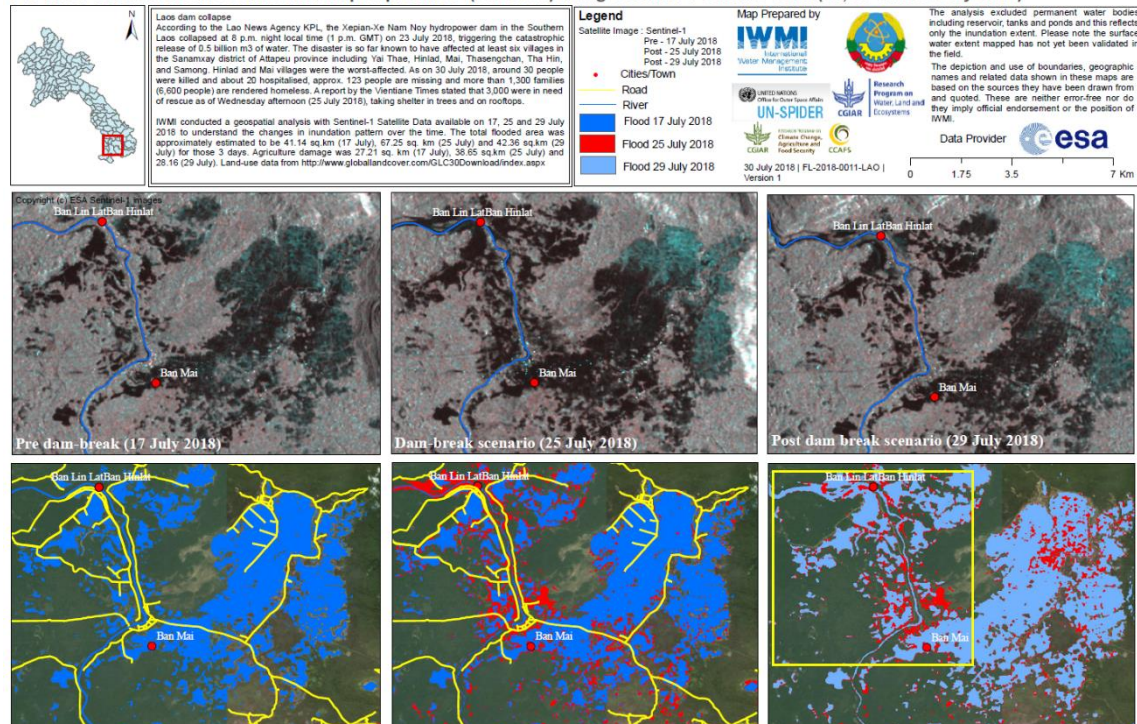


Figure 2 Time series analysis of pre and post dam break scenario in Attapeu Province (IWMI, 2018)

Parameter	Date	17 July	25 July	27 July	29 July
Inundation area (sqkm)		41.14	67.25	48.78	42.36
Inundated agriculture area (sqkm)		27.21	38.65	32.53	28.16
Number of villages inundated in Sanamxai District		Chomphoy, Done, Donesoug, Kamphor, Kung, Moung, Somphoy, Tamoryose, Thabok, Thasangchan (10)	Gvilay, Chomphoy, Done, Donesoug, Hinlath, Kamphor, Kung, Mai, Moung, Namkong, Samongtay, Sivilay, Somphoy, Tamoryose, Thabok, Thahintay, Thasangchan (17)	Chomphoy, Kung, Samongtay, Tamoryose, Thabok, Thahintay, Thasangchan (7)	

Consolidated from IWMI, ESA

- e. As of 30 July 2018, the five evacuation sites are being used by 5,946 IDPs / 1,193 families. Table below provides the breakdown of number of evacuees until 29 July 2018, with some of the evacuees have returned home.



No	Evacuation site	Number evacuees
1	School, Evacuation site 1, Sanamxai	3,731
2	Pathoumphon District	1,407
3	Nator Village, Sanamxai	600
4	Don Bok Village, Sanamxai	1,086
5	Tindong Village, Sanamxai	300

Source: DSW, AHA Centre ICLT

#### 4. ACTIONS TAKEN AND RESOURCES MOBILISED

##### Response by Government of Lao PDR

- Prime Minister of Lao PDR has reiterated that [a transparent investigation](#) will be done for assessing the Xepian-Xe Nam Noy Dam.
- Government of Lao PDR intensifying search and rescue efforts as the second week of emergency response period begins, [Lao People's Army have found more bodies](#), and accordingly number of missing people decreased to 120.
- Department of Social Welfare has erected the Mobile Storage Unit (MSU) in Sanamxai District Attapeu Province, which was sent by AHA Centre. The availability MSU will enhance the capacity of relief items storage in the most affected areas.
- Department of Social Welfare is has consolidated the total number of relief items received in-country and from outside, and working on to expedite the process of mobilization to Sanamxai District.

##### Response by the AHA Centre

- A second batch of In-Country Liaison Team (ICLT) from the AHA Centre has arrived in Vientiane on 31 July 2018. The ICLT will continue to support the Emergency Operation Centre of NDMC, Department of Social Welfare of Lao PDR, particularly on information management, stock management of incoming relief items and prioritization of relief items mobilisation. To further enhance the emergency relief operations in the the Attapeu province, the NDMC, Department of Social Welfare, requested the AHA Centre In-Country Liaison Team's (ICLT) to support the coordination of incoming international assistance.
- The AHA Centre is engaging in coordination and information sharing with agencies of United Nations in Lao PDR, International Federation of Red Cross and Red Crescent Societies (IFRC)
- and other humanitarian partners for streamlining information of relief items mobilization with Department of Social Welfare.
- The AHA Centre has facilitate clearance and mobilization of incoming relief items and personnel from Aquayana Pte. Ltd (Singapore) and Mercy Malaysia, and currently is in contact with potential assistance from Save the Children.
- ASEAN Emergency Response and Assessment Team (ERAT) is on standby for deployment.



## **Response by ASEAN Member States**

### **Singapore**

Offer of auxiliary deployment of Singapore Civil Defense Force's (SCDF) Disaster Assistance and Rescue Team (DART) has been accepted by Government of Lao PDR, to support disaster relief in Attapeu Province.

## **Response by ASEAN Dialogue Partners**

### **Australia**

Australia has landed two batches of relief items to the Pakse airport containing 1,3500 dignity kits for women and girls, 57 shelter kits, 280 family kits, 2 clean birth delivery kits, and 480 family tents.

- Content of dignity kits: soap menstrual pads, toothbrush and comb
- Content of shelter kits: handsaw (1), hammer (1) , shovel (1), hoe (1), machete (1), rope and nails
- Content of family kits: kitchen kits (1), bed nets (3), hygiene kits (1), blanket (5), sleeping mats (5), tool kit (1), tarpaulins and packed aqua tabs (100)
- Content of birth delivery kits: soap, plastic sheet, razorblade, gloves and umbilical cord ties

### **People Republic of China**

Chinese Ambassador to Laos Wang Wentian representing the Chinese government signed on Jul 30 a document to hand over relief aid to the Lao government for onward handing to flood victims in Sanamxay, Attapeu Province. The [donation package](#), worth 24.6 billion kip (CNY 20 million), included: 500 tents, 1,000 blankets, 1,000 mosquito nets, 100 boats, and 100 water filters.

### **Republic of Korea**

- [Relief items from the Republic of Korea](#) has arrived in the affected areas and handed over to Governor of Attapeu. In the statement by Ambassador of the Republic of Korea has stated that the offer of assistance may be extended to rehabilitation stage.
- [The Korean Air](#) has sent 36,000 liters of mineral water and 2,000 blankets for the affected location. The relief items were sent to the city of Da Nang, Viet Nam, which is close to the affected area.

## **Response by Humanitarian Partners until 1 August 2018**

In total, 12 countries/international organisation provided assistance to Lao PDR including relief items, response team and cash donation. The assistance comprises of at least seventy four (74) types of relief items are received which consist of food, shelter, health, logistics, non-food items (NFI), water, sanitation and health (WASH), and Search and Rescue (SAR) equipment such as boats.

There are 228 personnel of international response team deployed to the affected area consisting of 140 personnel from Vietnam (SAR and Medical) and 88 personnel from Thailand (SAR). Information on national response teams operations yet to be provided to determine the needs and the gap for the response operations. For search and rescue equipment, there are 171 boats and 300 life vests received for this relief category.

The WFP is deploying the Nutributter (nutritious food for children in sachets) and canned fish from its warehouse in Pakse. The distributed food package is estimated to be enough to cover rations for the 7,324 displaced people for two weeks.





## International Federation of Red Cross and Red Crescent Societies

Based on the coordination meeting between AHA Centre ICLT and International Federation of Red Cross and Red Crescent Societies (IFRC), the 2.9 million Swiss Franc emergency appeal has received 50% confirmation. It is targeting around 7,500 people (1,500 households) in the following areas of interventions: shelter; livelihoods and basic needs; WASH; protection, gender and inclusion; disaster risk reduction; and national society capacity enhancement. The IFC has deployed its in-country coordination and dispatched 1,400 food and relief kits.

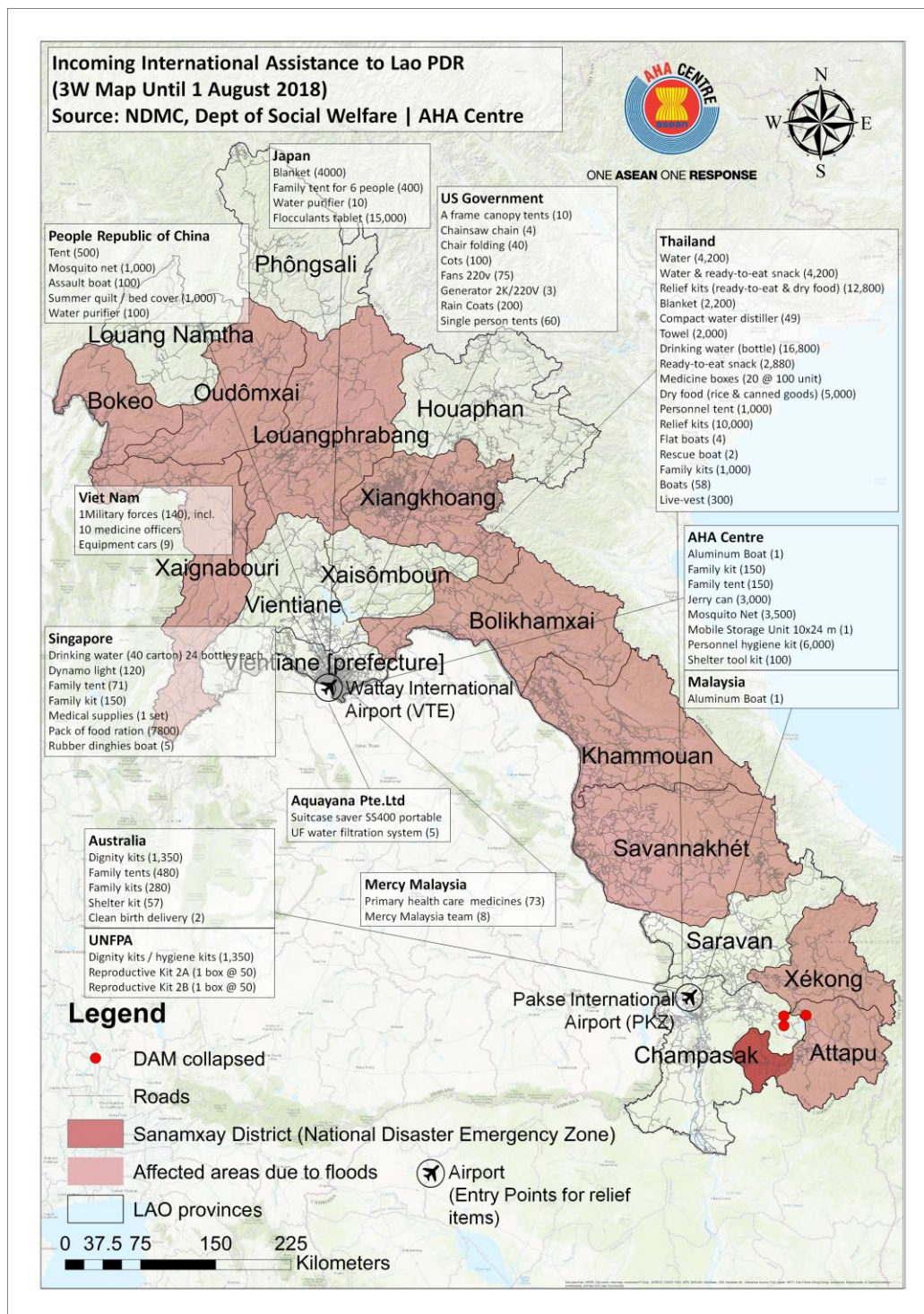


Figure 3 W Map of Incoming International Assistance to Lao PDR  
(Update until 1 August 2018)

## 5. RECOMMENDATIONS AND PLANNED ACTIONS

### Recommendations to be considered by humanitarian partners

Based on the number of families/people in the evacuation centre within Sanamxai District, table below provides information on the availability and gaps for some immediate needs. The table also provides total support coming from international support as well as from national donation (correct as of 1 August 2018).

No	Item	Cate-gory	Remarks	Total Needs in Attapeu Province	International Support	National Support	Total Support	Gap	% Available	%Gap
1	Family/Relief Kits	NFI	Per Family	1193	8110	0	8110	0	680%	0%
2	Tents	Shelter	Per Family	1193	1821	0	1821	0	152%	0%
3	Mosquito Nets	NFI	3 pcs per family	1988	6000	556	6556	0	330%	0%
4	Hygiene Kits	WASH	Individual, for 2 month	11928	10497	2500	12997	0	109%	0%
5	Blankets	NFI	Individual	5964	5369	1362	6731	0	113%	0%
6	Water	WASH	Needs per day per person @ 15 ltr	89460	30000	0	30000	59460	34%	66%
7	Rice	Food	0,8 kg per person per day for 60 days (kg)	286272	0	8544	8544	277728	3%	97%

Based on the above table, in Sanamxai District, **significant gaps** are identified for **Water at 66%** and **Rice at 57%** (Red cells). The need of **family/relief kits, tents, mosquito nets, hygiene kits and blankets** in Sanamxai District potentially have been covered with the current stock which are available **more than required (green cells)**. Hence, acceleration of relief items mobilization is needed. Thus, donation for these items is no longer considered as priority. As for the surplus relief items, potential mobilization to Xekong Province is recommended due to the nature of impact in the province, and followed with mobilization to other areas.

The above data is need **to be further validated** and compared with the result of the assessment in the affected areas of all ten provinces. Needs for other sector such as health are need to be further determined. Disaggregated affected population data including segregation by evacuation centre/district should be further collected to support decision making during relief distribution.

The AHA Centre will provide additional gap analysis and estimation once data on affected and displaced people from other villages, districts and provinces become available.



## AHA Centre plans the following action items

- a. The AHA Centre has been requested by the Focal Point for Offer of Assistance and Funding (Chief of the Prime Minister's Office Letter No: 1105, 24 July 2018) to facilitate offer of assistance from humanitarian community, and support the Department of Social Welfare. Humanitarian partners are advised to contact AHA Centre for streamlining the support to Lao PDR.
- b. The AHA Centre stands ready to facilitate coordination of incoming relief items. Humanitarian partners are advised to use [SASOP Form "Offer of Assistance"](#) and directed through the AHA Centre in-country (ICLT) or AHA Centre Emergency Operations Center in Jakarta, Indonesia.
- c. The AHA Centre ICLT is providing support in information management, stock tracking and management of relief items on the ground.
- d. The AHA Centre will provide further situation updates as situation progresses and more information is available.

---

Prepared by:

AHA Centre Emergency Operations Centre in collaboration with  
EOC of National Disaster Prevention and Control Committee (NDPCC) / National Disaster  
Management Committee, Department of Social Welfare, Ministry of Labour and Social Welfare

Contact:

- 1) Qingyuan Pang, Asst. Director, Disaster Monitoring & Analysis, [qing.pang@ahacentre.org](mailto:qing.pang@ahacentre.org)
- 2) Mizan B. F. Bisri, Disaster Monitoring & Analysis Officer, [mizan.bisri@ahacentre.org](mailto:mizan.bisri@ahacentre.org)

### ABOUT THE AHA CENTRE

The AHA Centre - ASEAN Coordinating Centre for Humanitarian Assistance on disaster management - is an inter-governmental organisation established by 10 ASEAN Member States – Brunei Darussalam, Cambodia, Indonesia, Lao PDR, Malaysia, Myanmar, Philippines, Singapore, Thailand and Viet Nam - to facilitate the cooperation and coordination among ASEAN Member States and with the United Nations and international organisations for disaster management and emergency response in the region.

The ASEAN Coordinating Centre for Humanitarian Assistance on disaster management  
(AHA Centre),

Graha BNPB 13<sup>th</sup> Floor, JL Raya Pramuka Kav 38, East Jakarta, 13210, Indonesia

Phone: +62-21-210-12278 | [www.ahacentre.org](http://www.ahacentre.org) | email: [info@ahacentre.org](mailto:info@ahacentre.org)

