

S/N	Date	Country, Disaster Log and Key Updates
1	15-23 Sept 2018	Philippines, Typhoon Mangkhut (updates) http://adinet.ahacentre.org/reports/view/1304
2	17 Sept 2018	Thailand, Landslide in Mae La Oon Province http://adinet.ahacentre.org/reports/view/1317
3	17 Sept 2018	Indonesia, Strong Wind in Landak Regency http://adinet.ahacentre.org/reports/view/1313
4	19 Sept 2018	Indonesia, Strong Wind in Takalar Regency http://adinet.ahacentre.org/reports/view/1314
5	20 Sept 2018	Philippines, Landslide in Naga City, Cebu http://adinet.ahacentre.org/reports/view/1312
6	21 Sept 2018	Indonesia, Strong Wind in Wonogiri Regency http://adinet.ahacentre.org/reports/view/1315
7	21 Sept 2018	Indonesia, Strong Wind in Banjarnegara Regency http://adinet.ahacentre.org/reports/view/1316

Regional Summary of Week 38 and Outlook for Week 39

- 1) In Week 38, hydro-meteorological disasters dominated regional record with two active systems (Typhoon Mangkhut & TS Trami) in the region, four localised strong winds (Indonesia), and localised storm warnings (Brunei Darussalam, Malaysia, and Thailand). In addition, heavy rainfall also triggered two moderate-scale landslides (Thailand and Philippines).
- 2) Four moderate earthquakes (between M 4.5 and M 5.5) were observed in Indonesia ([BMKG](#)) and one (M 4.9) in the Philippines during Week 38. There are no fatalities and damages reported. In addition, there are no changes on the alert levels of volcanoes the region ([PVMBG](#); [PHIVOLCS](#)).
- 3) With the welcome of offer of assistance by the NDRRMC (Philippines), the AHA Centre is currently engaging in emergency response operations to Typhoon Mangkhut. ASEAN relief items have been locally procured and ASEAN-ERAT has been dispatched. Find AHA Centre's updates here: <https://ahacentre.org/typhoon-mangkhut-ompong-updates/>
- 4) The AHA Centre is monitoring closely the movement of **Tropical Storm Trami (Paeng)**, which may be developed as a Category 4 Typhoon and bring heavy rainfall, storm surge and strong wind to Typhoon Mangkhut affected areas in Northern Luzon, Philippines (see page 2 and 3). General public are advised to monitor early warning messages from [PAGASA](#).
- 5) ASEAN Specialised Meteorological Centre ([ASMC](#)) stated that throughout second half of September, wet weather conditions and above-average rainfall are expected in the region around 10° N. This region is likely to return to normal conditions in the last week of September with the weakening of the Southwest Monsoon winds. For most of the southern ASEAN region, slightly drier conditions are expected.
- 6) All the remaining disasters occurred in Week 38 were within the capacity of each Member State.

REGIONAL TALLY

Affected population: **2,145,841*** # Affected families: **509,465*** # Displaced population: **236,229***



*AHA Centre's estimation based on total number of deaths, injuries and IDPs reported by National Disaster Management Offices (NDMOs) of each ASEAN Member State and other verified sources.

DATA SOURCE

Detailed information of each disaster and emergency situation are available at: <http://adinet.ahacentre.org/reports>

AHA Centre - Disaster Monitoring & Response System (DMRS); Pacific Disaster Center (PDC Global); ASEAN Specialized Meteorological Center (ASMC); Indonesia: BNPB, BPBDs of affected municipalities, BMKG, BPS, PVMBG-ESDM; Malaysia: MetMalaysia, NADMA; Philippines: NDRRMC, DSWD, PAGASA, PHIVOLCS; Thailand: DDPM, TMD; Various news agencies

DISCLAIMER

The AHA Centre was established in November 2011 by the Association of Southeast Asian Nations (ASEAN) Member States to facilitate cooperation and coordination among Member States, relevant agencies of the United Nations and international organisations in disaster management and humanitarian assistance.

This update consists of significant natural disaster events that occur in ASEAN Member States, including Brunei Darussalam, Cambodia, Indonesia, Lao PDR, Malaysia,

Myanmar, Philippines, Singapore, Thailand and Viet Nam. The disasters recorded include Drought, Flood, Earthquake, Tsunami, Volcano, Wind, Landslide and Storm.

The use of boundaries, geographic names, related information and potential considerations for response are for reference, not warranted to be error free or implying official endorsement from ASEAN Member States.

© 2017 AHA Centre.
All rights reserved.
You are receiving this email because you are registered in our distribution list.

Our mailing address is:
AHA Centre,
GRAHA BNPB 13th Floor,
Jl. Raya Pramuka Kav. 38,
Jakarta 13120 Indonesia

Week
38

WEEKLY DISASTER UPDATE

17 – 23 September 2018



ONE ASEAN ONE RESPONSE

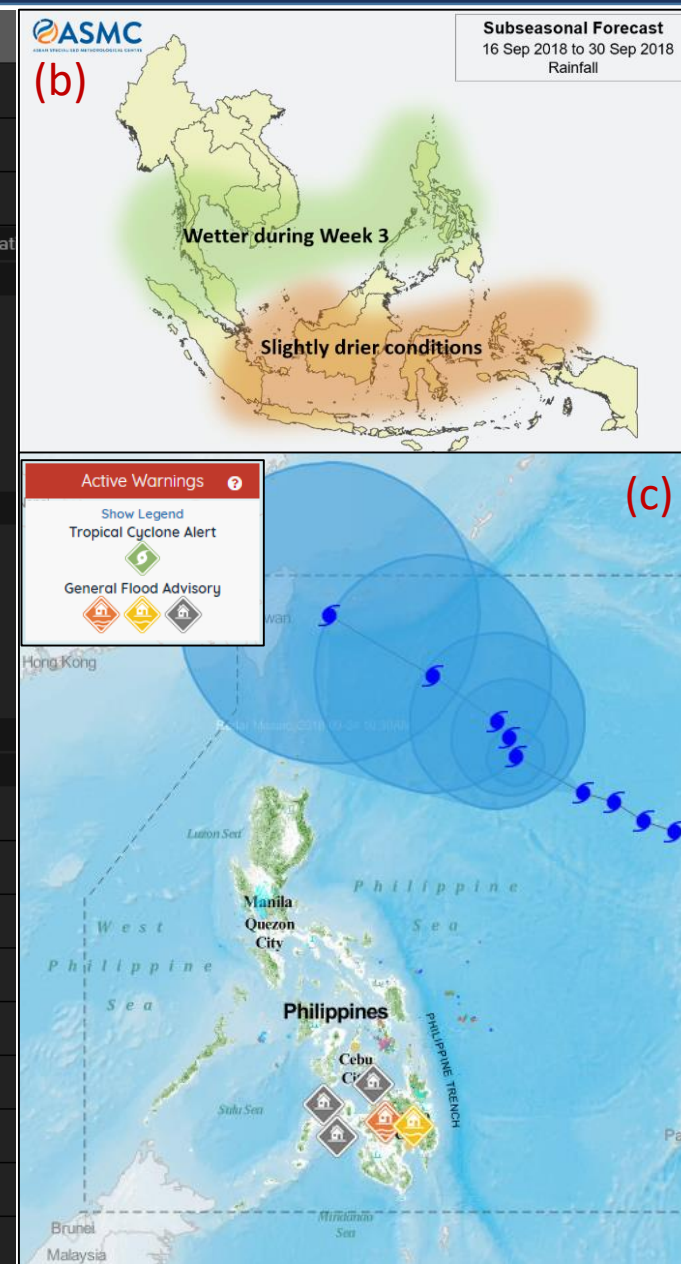
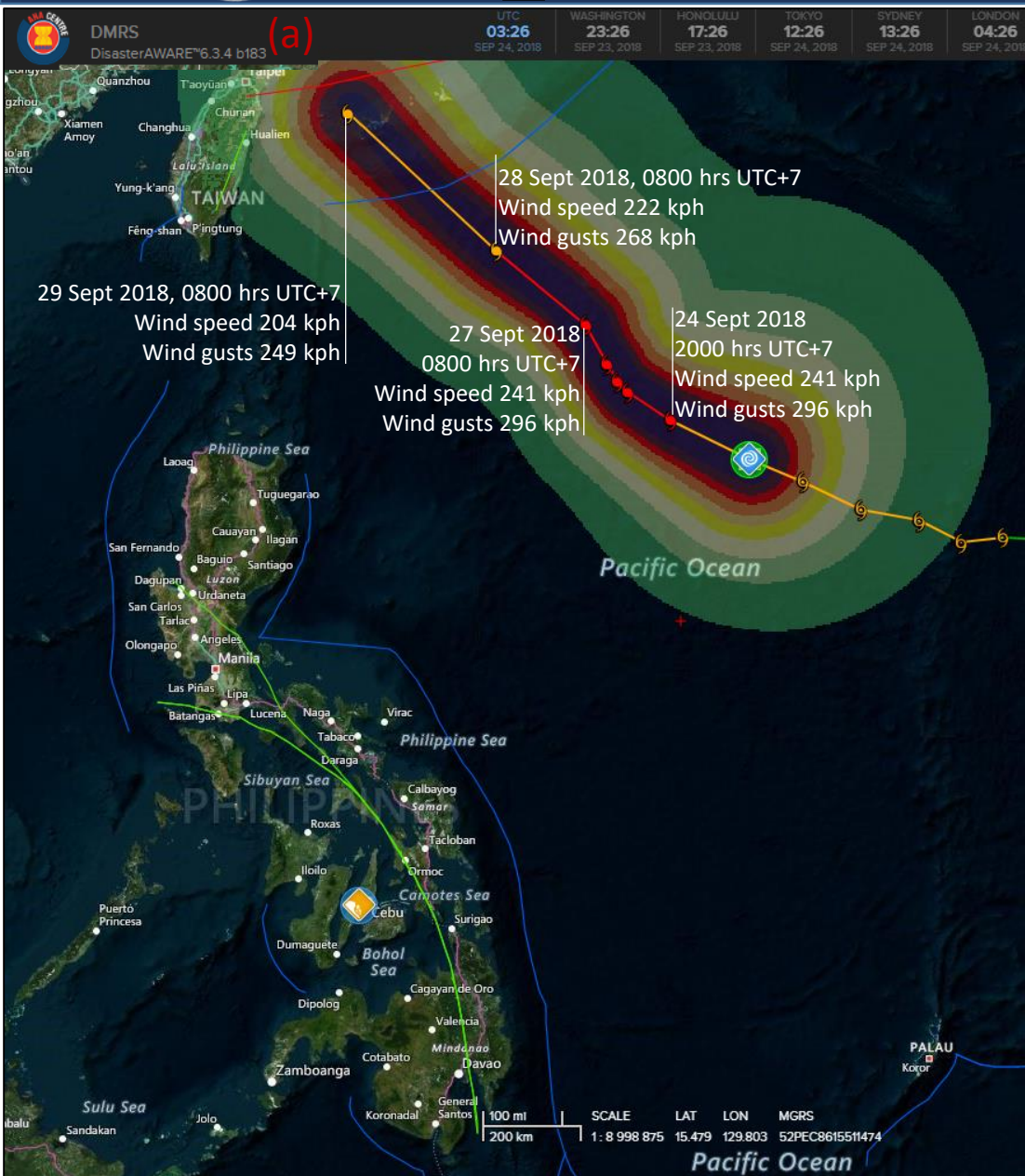


Fig (a) ASEAN DMRS screenshot on Forecast of TS / Ty Trami | Fig (b) Subseasonal Outlook from ASMC | Fig (c) Active Warnings from PAGASA

DATA SOURCE
Detailed information of each disaster and emergency situation are available at: <http://adinet.ahacentre.org/reports>
AHA Centre - Disaster Monitoring & Response System (DMRS); Pacific Disaster Center (PDC Global); ASEAN Specialized Meteorological Center (ASMC); Indonesia: BNPB, BPPDs of affected municipalities, BMKG, BPS, PVMBG-ESDM; Malaysia: MetMalaysia, NADMA; Philippines: NDRRMC, DSWD, PAGASA, PHIVOLCS; Thailand: DDPM, TMD; Various news agencies

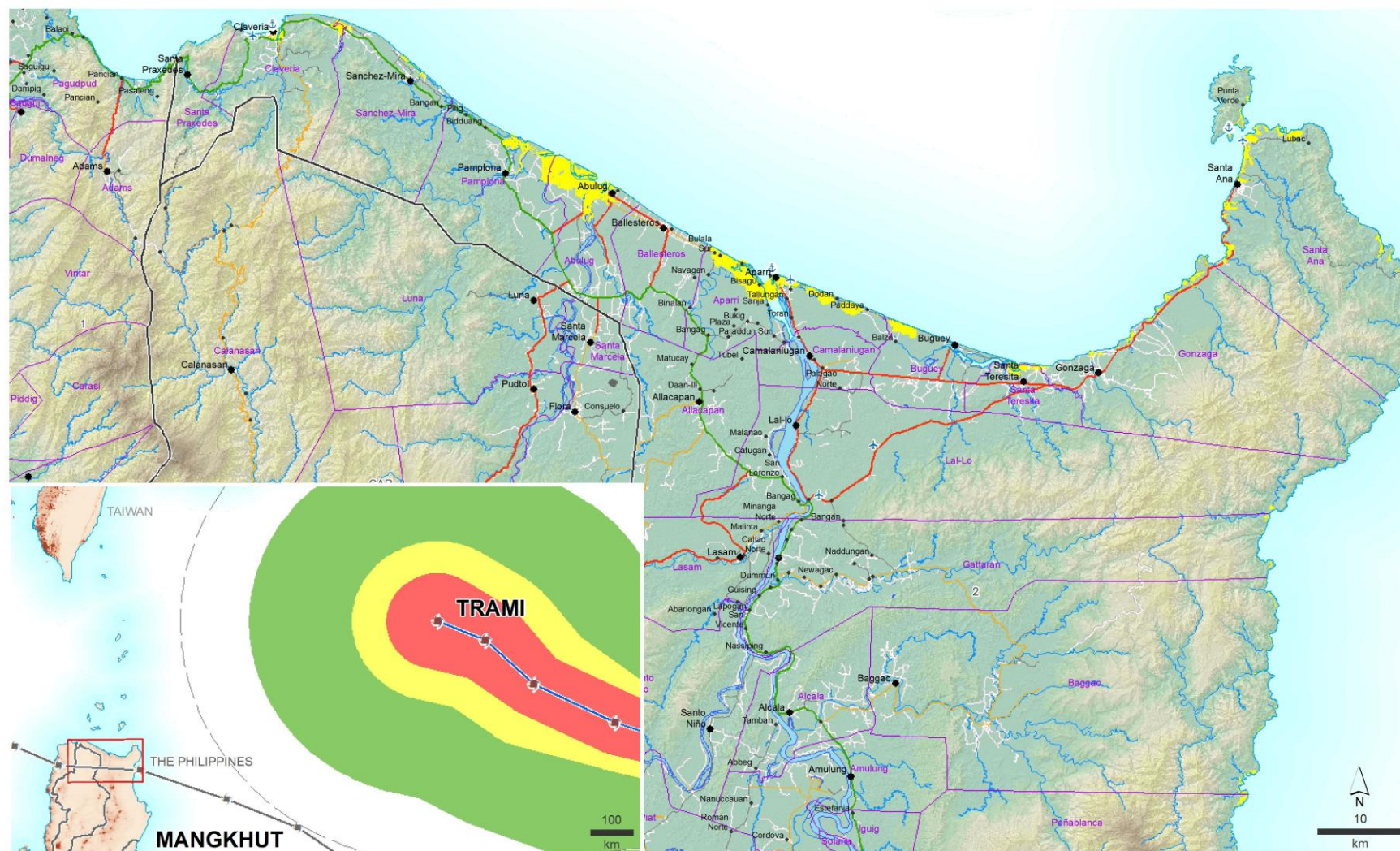
DISCLAIMER
The AHA Centre was established in November 2011 by the Association of Southeast Asian Nations (ASEAN) Member States to facilitate cooperation and coordination among Member States, relevant agencies of the United Nations and international organisations in disaster management and humanitarian assistance.
This update consists of significant natural disaster events that occur in ASEAN Member States, including Brunei Darussalam, Cambodia, Indonesia, Lao PDR, Malaysia,

Myanmar, Philippines, Singapore, Thailand and Viet Nam. The disasters recorded include Drought, Flood, Earthquake, Tsunami, Volcano, Wind, Landslide and Storm.
The use of boundaries, geographic names, related information and potential considerations for response are for reference, not warranted to be error free or implying official endorsement from ASEAN Member States.

© 2017 AHA Centre.
All rights reserved.
You are receiving this email because you are registered in our distribution list.

Our mailing address is:
AHA Centre,
GRAHA BNPB 13th Floor,
Jl. Raya Pramuka Kav. 38,
Jakarta 13120 Indonesia

The Philippines: Areas at potential risk of a 2m storm surge based on historical data



Inset map



Main map



Data Sources: PSA, Joint Research Centre, NOAA WorldPop, The University of the Philippines Nationwide Operational Assessment of Hazards (UP-NOAH)

Map created by MapAction (22/09/2018)

DATA SOURCE

Detailed information of each disaster and emergency situation are available at: <http://adinet.ahacentre.org/reports>

AHA Centre - Disaster Monitoring & Response System (DMRS); Pacific Disaster Center (PDC Global); ASEAN Specialized Meteorological Center (ASMC); Indonesia: BNPB, BPBDs of affected municipalities, BMKG, BPS, PVMBG-ESDM; Malaysia: MetMalaysia, NADMA; Philippines: NDRRMC, DSWD, PAGASA, PHIVOLCS; Thailand: DDPM, TMD; Various news agencies

DISCLAIMER

The AHA Centre was established in November 2011 by the Association of Southeast Asian Nations (ASEAN) Member States to facilitate cooperation and coordination among Member States, relevant agencies of the United Nations and international organisations in disaster management and humanitarian assistance.

This update consists of significant natural disaster events that occur in ASEAN Member States, including Brunei Darussalam, Cambodia, Indonesia, Lao PDR, Malaysia,

Myanmar, Philippines, Singapore, Thailand and Viet Nam. The disasters recorded include Drought, Flood, Earthquake, Tsunami, Volcano, Wind, Landslide and Storm.

The use of boundaries, geographic names, related information and potential considerations for response are for reference, not warranted to be error free or implying official endorsement from ASEAN Member States.

© 2017 AHA Centre. All rights reserved. You are receiving this email because you are registered in our distribution list.

Our mailing address is: AHA Centre, GRAHA BNPB 13th Floor, Jl. Raya Pramuka Kav. 38, Jakarta 13120 Indonesia