



ONE ASEAN
ONE RESPONSE

WEEKLY DISASTER UPDATE

Week 30
22 – 28 Jul 2019



The AHA Centre, GRAHA BNPB 13th floor,
Jl. Raya Pramuka Kav. 38, East Jakarta 13120 Indonesia

SOURCES

ASEAN Disaster Monitoring & Response System (DMRS);
ASEAN Specialised Meteorological Centre (ASMC); Pacific
Disaster Center (PDC Global); United Nations Office for
the Coordination of Humanitarian Affairs (OCHA)

Indonesia: BNPB, BMKG, MOH; Philippines: NDRRMC,
PHIVOLCS, DSWD; Thailand: DDPM;
Various news agencies

DISCLAIMER

The AHA Centre was established in November 2011 by the
Association of Southeast Asian Nations (ASEAN) Member
States to facilitate cooperation and coordination among
Member States, relevant agencies of the United Nations
and international organisations in disaster management and
emergency response.

This update consists of significant natural disaster events
that occurred in ASEAN Member States – Brunei
Darussalam, Cambodia, Indonesia, Lao PDR, Malaysia,
Myanmar, Philippines, Singapore, Thailand, and Viet Nam.
The disasters recorded include Drought, Flood, Earthquake,
Tsunami, Volcano, Wind, Landslide, and Storm.

The use of boundaries, geographic names, related
information, and potential considerations for response are
for references, not warranted to be error-free or implying
official endorsement from ASEAN Member States.

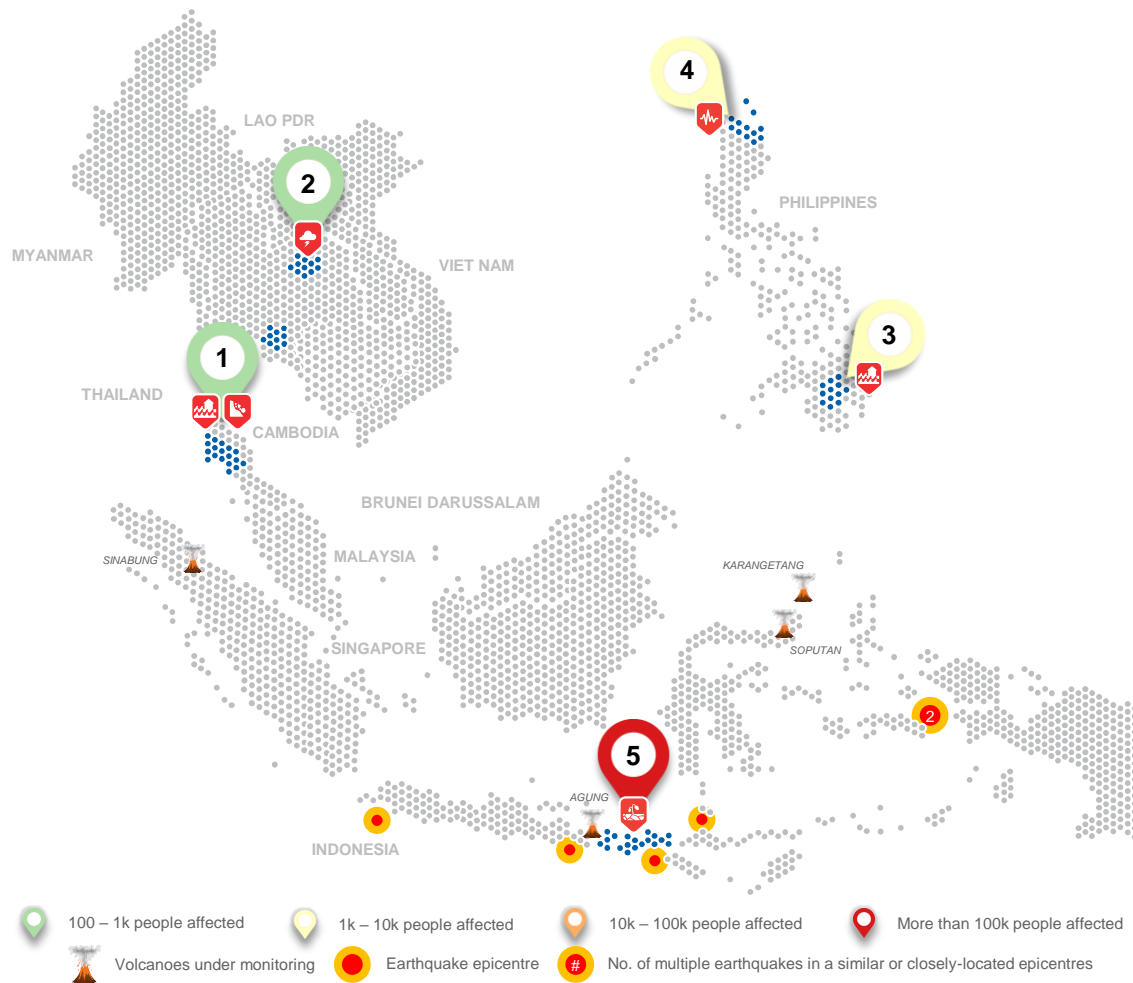
© 2019 AHA Centre.
All rights reserved.

For inquiries, comments, and/or suggestions,
you may reach us through data@ahacentre.org



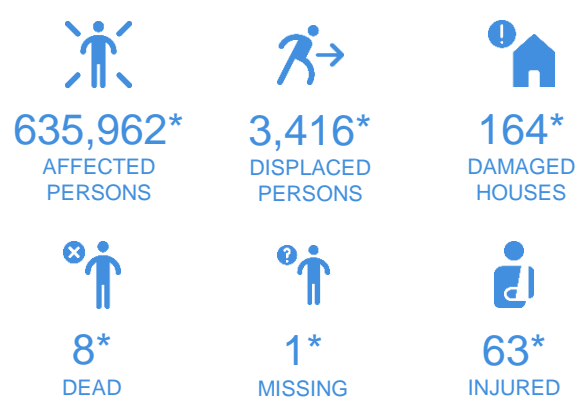
You are receiving this email because you are
registered in our distribution list.

SCAN TO SUBSCRIBE



100 – 1k people affected
1k – 10k people affected
10k – 100k people affected
More than 100k people affected
Volcanoes under monitoring
Earthquake epicentre
No. of multiple earthquakes in a similar or closely-located epicentres

REGIONAL TALLY



* Estimations are based on data reported/confirmed by National Disaster Management Organisations of each respective ASEAN Member State and other verified sources

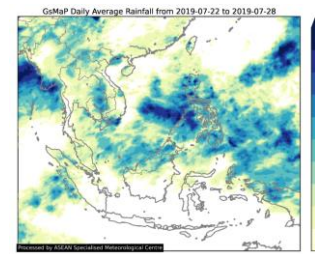
REGIONAL SUMMARY:

In week thirty (30) AHA Centre observed various disaster event in the ASEAN region which derived by hydro-met and also geo hazards. As the Southwest Monsoon continue and brought torrential rain, floods and landslide have occurred consequently in the northern part of ASEAN region. Meanwhile, drought events have been reported in several location on Java and Nusa Tenggara, and forecasted to intensify in the upcoming month.

HIGHLIGHT:

According to [PHIVOLCS](#) two (2) earthquakes have occurred within the same area which have magnitude of 5.9 (8-km depth) and 5.4 (15-km depth) consequently. The quakes have occurred on Saturday, 26 July 2019 in Itbayat town, Batanes province. [DSWD](#) reported the intensity VII quake was felt in Itbayat, and as many as 911 families (2,963 people) were affected. On the other hand, [NDRRMC](#) have been coordinating the emergency response, led by sub-national authorities, while SAR operations and deliver to relief items immediately started.

HYDRO-METEO-CLIMATOLOGICAL:



Compared to last week, the scattered and isolated showers over the northern part of the region increased as it influenced by the weather system over the South China Sea, east of the Philippines. Meanwhile, in the southern ASEAN region, weather remained generally dry. According to [ASMC](#), hotspots continued to be detected in Sumatra and Kalimantan. Persistent hotspots with smoke haze were detected in Riau and Jambi, and in Central Kalimantan

GEOPHYSICAL:



As many as ten (10) earthquakes with magnitude 5.0 and above were reported by [BMKG](#) and [PHIVOLCS](#) during the week. Four (4) of the quakes have occurred in Batanes and have caused minor damages in the affected area.

OUTLOOK:



[ASMC](#) forecasts that over the next few days, the prevailing winds in the central to the upper part of the region will strengthen and blow from the southwest or west. This condition is expected to bring more showers to the northern ASEAN region especially in the Philippines and across the South China Sea area. Meanwhile in the southern ASEAN region, dry conditions are expected to persist, particularly over southern parts of Sumatra and Kalimantan, and the Java Sea area where the prevailing winds are forecast to blow from the southeast or south.