



ONE ASEA
ONE RESPONSE

WEEKLY DISASTER UPDATE

Week 47
18 – 24 Nov 2019



The AHA Centre, GRAHA BNPB 13th floor,
Jl. Raya Pramuka Kav. 38, East Jakarta 13120 Indonesia

SOURCES

ASEAN Disaster Monitoring & Response System (DMRS);
ASEAN Specialised Meteorological Centre (ASMC); Pacific
Disaster Center (PDC Global); United Nations Office for the
Coordination of Humanitarian Affairs (OCHA)

Indonesia: BMKG; Lao PDR: Lao PDR NDMO; Philippines:
NDRRMC, PHIVOLCS; Thailand: DDPM, TMD.

Various news agencies

DISCLAIMER

The AHA Centre was established in November 2011 by the
Association of Southeast Asian Nations (ASEAN) Member
States to facilitate cooperation and coordination among
Member States, relevant agencies of the United Nations
and international organisations in disaster management and
emergency response.

This update consists of significant natural disaster events
that occurred in ASEAN Member States – Brunei
Darussalam, Cambodia, Indonesia, Lao PDR, Malaysia,
Myanmar, Philippines, Singapore, Thailand, and Viet Nam.
The disasters recorded include Drought, Flood, Earthquake,
Tsunami, Volcano, Wind, Landslide, and Storm.

The use of boundaries, geographic names, related
information, and potential considerations for response are
for references, not warranted to be error-free or implying
official endorsement from ASEAN Member States.

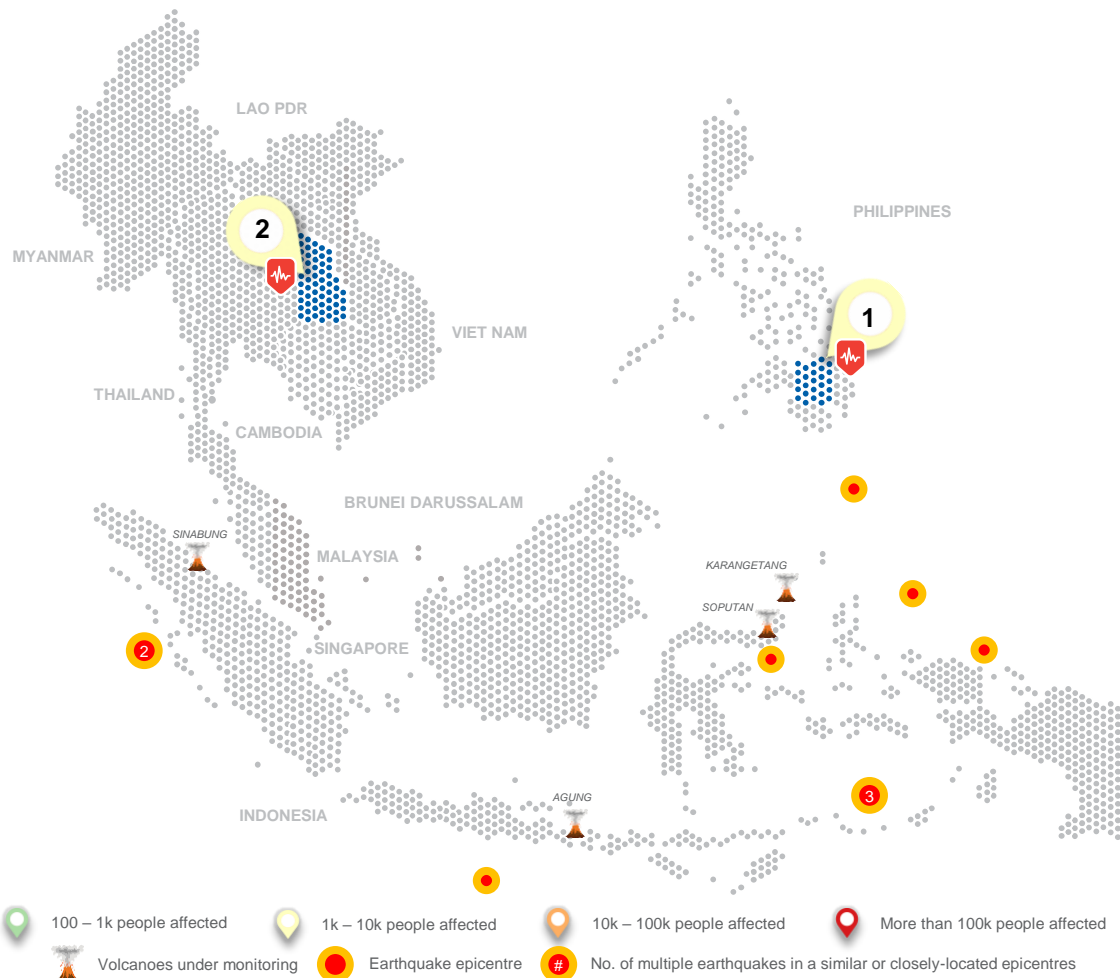
© 2019 AHA Centre.
All rights reserved.

For inquiries, comments, and/or suggestions,
you may reach us through data@ahacentre.org



You are receiving this email because you are
registered in our distribution list.

SCAN TO SUBSCRIBE



REGIONAL TALLY

3609*
AFFECTED
PERSONS

884*
DISPLACED
PERSONS

530*
DAMAGED
HOUSES

0*
DEAD

0*
MISSING

28*
INJURED

01 Philippines:

M 5.9 Earthquake in Bukidnon
18 Nov 2019 | More details at:
<http://adinet.ahacentre.org/reports/view/1518>

02 Lao PDR:

M 6.4 Earthquake in Near Border of Thailand
21 Nov 2019 | More details at:
<http://adinet.ahacentre.org/reports/view/1519>

* Estimations are based on data reported/confirmed by National Disaster Management Organisations
of each respective ASEAN Member State and other verified sources

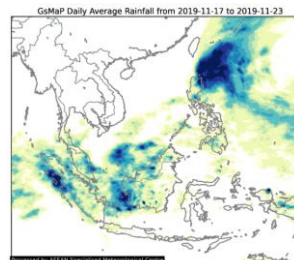
REGIONAL SUMMARY:

The northern part of the Philippines continued to experience heavy rains due to the influence of Tropical Storms (TS), while the Mekong sub-region remained generally dry. Earthquakes also occurred in the northern part of the region, and have caused minor damages in the Philippines, as well as at the border between Lao PDR and Thailand. The equatorial region continued to experience scattered showers that subdued hotspots activity, although some are still detected in southern Sumatra and Kalimantan (Indonesia).

HIGHLIGHT:

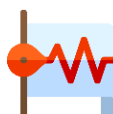
The Philippine Institute of Volcanology and Seismology ([PHIVOLCS](http://phivolcs.dpp.gov.ph)) reported another strong shaking earthquake in Bukidnon Province, Mindanao Island on Monday, 18 November 2019, at 20:22 (UTC+7). This earthquake follows a series of three previous main earthquakes with magnitudes of more than 6.0, that occurred earlier this month in Mindanao Island. The earthquake internally displaced almost 800 people, and reportedly damaged 440 houses and almost 100 schools. Meanwhile, the Thai Meteorological Department ([TMD](http://tmd.go.th)) reported that a M 6.4 earthquake occurred in Xayaboury Province, Lao PDR, near the border of Thailand, on 21 November 2019 at 06:50 (UTC+7), and has damaged several houses and public buildings, with a dozen injured and almost 100 people displaced.

HYDRO-METEO-CLIMATOLOGICAL:



Concordant with the previous week, some scattered showers occurred in the equatorial region. The northern part of the Philippines experienced heavy rainfall due to the influence of Typhoon KALMAEGI (locally named RAMON) and Tropical Storm FUNGWONG (locally named SARAH). Meanwhile, several parts in the southern region, including East Nusa Tenggara (Indonesia), have yet to experience any form of rain which have caused prolonged drought.

GEOPHYSICAL:



There were **twelve (12)** earthquakes with magnitude 5.0 and above that occurred last week in Indonesia ([BMKG](http://bmkg.go.id)), Lao PDR ([TMD](http://tmd.go.th)), and the Philippines ([PHIVOLCS](http://phivolcs.dpp.gov.ph)). The Lao PDR earthquake triggered shaking as far as several northeastern parts of Thailand, and this particularly unique event has affected more than a thousand people across both countries.

OUTLOOK:



For the next few days, the ASEAN Specialised Meteorological Centre ([ASMC](http://asmc.org)) forecasts generally dry conditions over the Mekong sub-region, and showers in the southern region, although a positive Indian Ocean Dipole (IOD) phase still persists. The prevailing winds are forecast to blow from the northeast over areas north of the equator, and remain light and variable in direction to the south of the equator.