



ONE ASEAN  
ONE RESPONSE

# WEEKLY DISASTER UPDATE

Week 51  
16 – 22 Dec 2019



The AHA Centre, GRAHA BNPB 13th floor,  
Jl. Raya Pramuka Kav. 38, East Jakarta 13120 Indonesia

## SOURCES

ASEAN Disaster Monitoring & Response System (DMRS);  
ASEAN Specialised Meteorological Centre (ASMC); Pacific  
Disaster Center (PDC Global); United Nations Office for the  
Coordination of Humanitarian Affairs (OCHA)

Indonesia: BNPB, BMKG; Malaysia: NADMA; Philippines:  
PHIVOLCS; Thailand: DPPM

Various news agencies

## DISCLAIMER

The AHA Centre was established in November 2011 by the  
Association of Southeast Asian Nations (ASEAN) Member  
States to facilitate cooperation and coordination among  
Member States, relevant agencies of the United Nations  
and international organisations in disaster management and  
emergency response.

This update consists of significant natural disaster events  
that occurred in ASEAN Member States – Brunei  
Darussalam, Cambodia, Indonesia, Lao PDR, Malaysia,  
Myanmar, Philippines, Singapore, Thailand, and Viet Nam.  
The disasters recorded include Drought, Flood, Earthquake,  
Tsunami, Volcano, Wind, Landslide, and Storm.

The use of boundaries, geographic names, related  
information, and potential considerations for response are  
for references, not warranted to be error-free or implying  
official endorsement from ASEAN Member States.

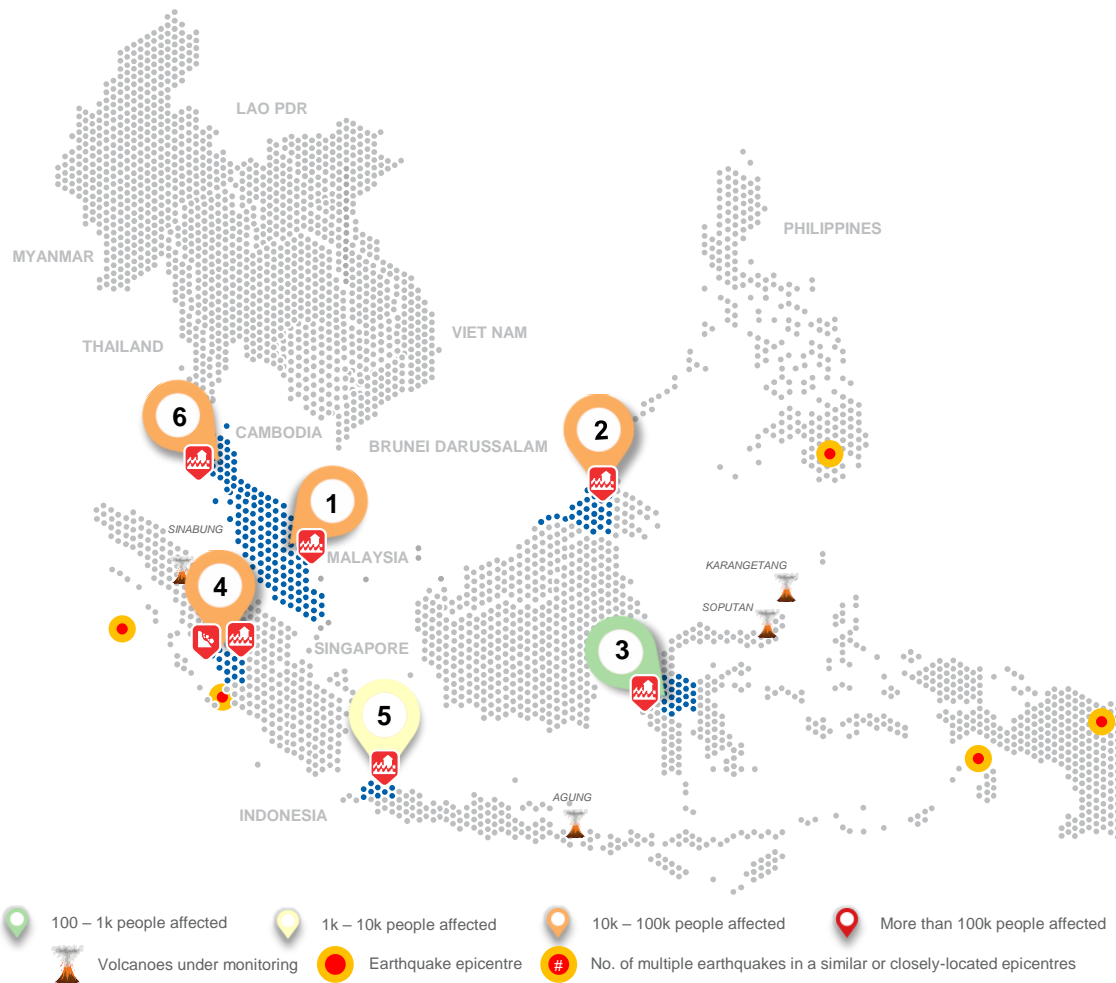
© 2019 AHA Centre.  
All rights reserved.

For inquiries, comments, and/or suggestions,  
you may reach us through [data@ahacentre.org](mailto:data@ahacentre.org)



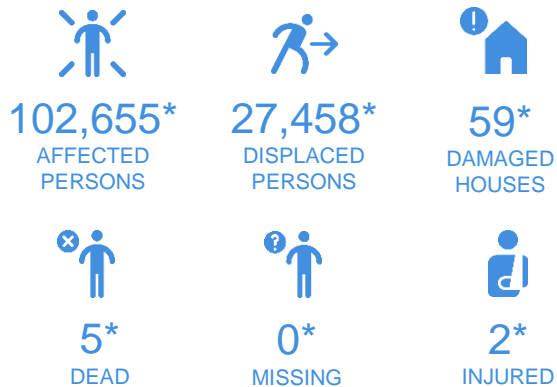
You are receiving this email because you are  
registered in our distribution list.

SCAN TO SUBSCRIBE



100 – 1k people affected  
1k – 10k people affected  
10k – 100k people affected  
More than 100k people affected  
Volcanoes under monitoring  
Earthquake epicentre  
No. of multiple earthquakes in a similar or closely-located epicentres

## REGIONAL TALLY



\* Estimations are based on data reported/confirmed by National Disaster Management Organisations  
of each respective ASEAN Member State and other verified sources

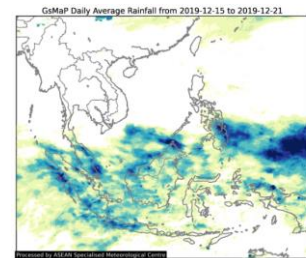
## REGIONAL SUMMARY:

Wet conditions continues in the southern part of ASEAN region due to the Northeast Monsoon. Indonesia, Malaysia, and southern Thailand are experiencing flooding and landslides since early this month, while the number of affected areas within this week has increased. Currently, a Tropical Storm named PHANFONE is developing in the eastern part of the Philippines, and expected to reach mid part of the Philippines during Christmas. Meanwhile, currently there are three (3) main active volcanoes which remain in level II alert namely Sinabung, Agung, and Karangetang.

## HIGHLIGHT:

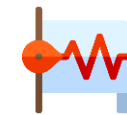
Flooding has been the highlighted event within this week. As the Northeast Monsoon strengthens, continuous rains have occurred in the southern part of ASEAN region since late November, resulting to flooding and landslides across Indonesia (BNPB) and Malaysia (NADMA), and have flooded several areas in Thailand (DPPM). With more than 100,000 people affected during the week, and more than 27,000 displaced, each event is still within the national government capacities. The AHA centre is closely monitoring these events.

## HYDRO-METEO-CLIMATOLOGICAL:



Northeast Monsoon continues, with more rains and thunderstorms occurring in southern part of ASEAN region. During the week, numbers of flooding and landslides have been reported, and expected to continue till end of 2019. Currently, a Tropical Storm named PHANFONE developed east of the Philippines and expected to strengthen to Category 1 Typhoon which forecasts to make landfall during the Christmas in the Philippines.

## GEOPHYSICAL:



There were **five (5)** earthquake events with magnitude 5.0 and above that occurred last week, four (4) in Indonesia (BMKG) and one (1) in the Philippines (PHIVOLCS). Meanwhile, Soputan Volcano in North Sulawesi has been downgraded to level II alert, with only three (3) volcanoes remain in level III alert namely Sinabung, Agung, and Karangetang, which are all located in Indonesia.

## OUTLOOK:



The ASEAN Specialised Meteorological Centre (ASMC) forecasts that dry weather will persist in the Mekong sub-region, while scattered rain showers can be expected elsewhere in the ASEAN region. Winds are expected to blow from the northeast or east north of the equator, and continue to remain weak and variable south of the equator. In addition, Tropical Storm PHANFONE is expected to make landfall in the Philippines within this week as it develops to a Category 1 typhoon.