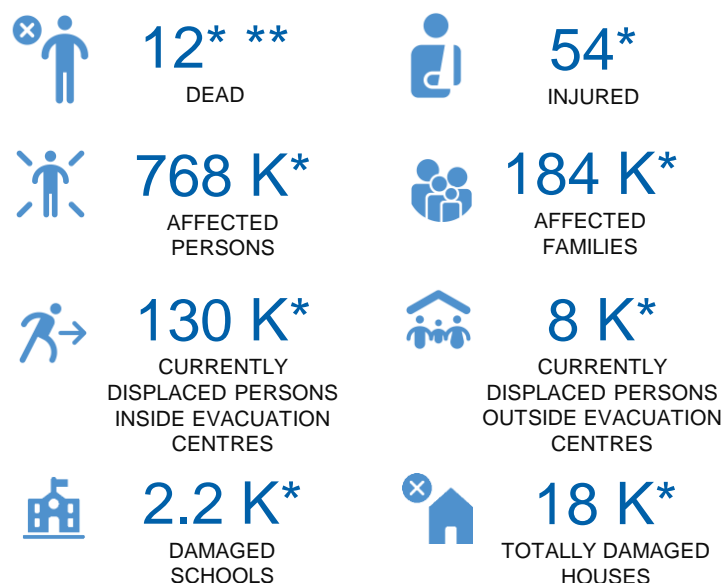


## KEY FIGURES



\*Estimations are based on data reported/confirmed by National Disaster Management Organisations of each respective ASEAN Member State and other verified sources.  
\*\* Changes in the figures are due to the data validation conducted by the NDMO.

## Philippines

- Typhoon KAMMURI (or locally named *TISOY*), which was formed in the northwestern Pacific Ocean on 25 November 2019 and developed into a Typhoon, traversed through the Philippines from period 02-04 December 2019. The Philippine Atmospheric, Geophysical and Astronomical Services Administration ([PAGASA](#)), reported that at least seven (7) regions experienced heavy rains and strong winds; while The National Disaster Risk Reduction and Management Council ([NDRRMC](#)) reported that at least four (4) regions were affected.
- According to the latest [NDRRMC](#) report, a total of 196 areas were flooded in Regions III, CALABARZON, V, VI, and VIII; of which 27 areas have already subsided. In terms of power supply, there are still a total of 256 areas in Regions V, VIII, CAR, and CALABARZON with power interruption due to affected transmission lines. On road access, there are still 19 road sections and 2 bridges that are not yet passable.
- The Philippine Coast Guard (PCG) have cleared all shipping and fishing companies to resume with their normal operations. As of yesterday, 05 December 2019, there were no more stranded passengers, vessels, motor bancas, and rolling cargoes in all ports.
- Around US\$ 41.3 million cost of damages to crops were estimated in Regions III, CALABARZON, MIMAROPA, V, and VI. Of which, about 60% is related to high value commercial crops (mango, banana, papaya, vegetables).
- The government-led Rapid Damage Assessment and Needs Analysis (RDANA) is ongoing, while the [NDRRMC](#) Emergency Operations Center alert status remains in BLUE. Currently, the disaster management is still within National Government capacities.
- The AHA Centre National Logistic Officer for the Philippines is in close coordination with the [NDRRMC](#) for latest development. The Centre is on stand-by, continuously monitoring the event, and will issue updates should there be any significant development.

### DATA SOURCES

AHA Centre Disaster Monitoring & Response System (DMRS);  
ASEAN Disaster Information Network;  
Pacific Disaster Center (PDC Global); Philippines: National Disaster Risk Reduction Management Council (NDRRMC); Philippine Atmospheric, Geophysical and Astronomical Services Administration (PAGASA); Department of Social Welfare and Development (DSWD); Various news sources

### DISCLAIMER

The AHA Centre was established in November 2011 by the Association of South East Asian National (ASEAN) and ASEAN member states to facilitate cooperation and coordination among the Parties, relevant agencies of the United Nations and international organisations in disaster

management and humanitarian assistance.

The use of boundaries, geographic names, related information and potential considerations for response are for reference, not warranted to be error free or implying official endorsement from ASEAN Member States.

© 2019 AHA Centre.  
All rights reserved.  
You are receiving this email because you are registered in our distribution list.

Our mailing address is:  
AHA Centre,  
GRAHA BNPB 13<sup>th</sup> Floor,  
Jl. Raya Pramuka Kav. 38,  
Jakarta 13120 Indonesia