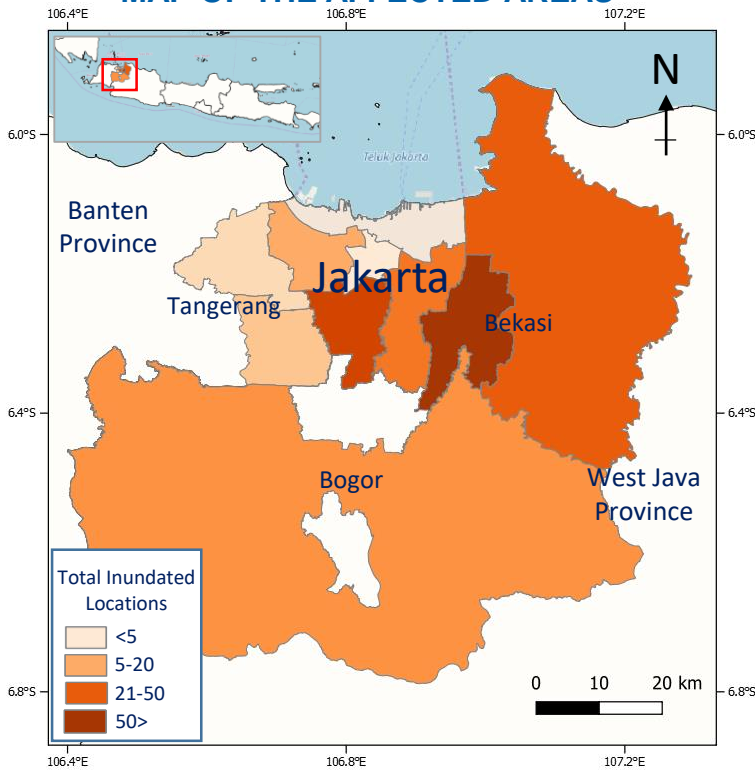
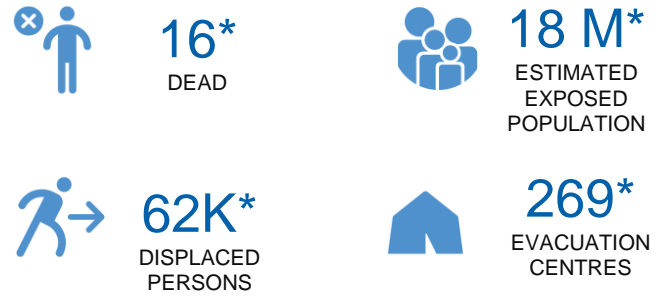


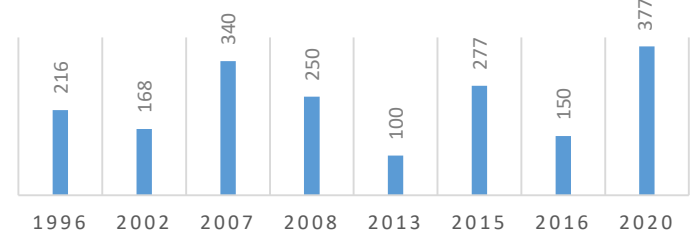
MAP OF THE AFFECTED AREAS



KEY FIGURES



MAX. RAINFALL INTENSITIES (mm/day)



*Estimations are based on data reported/confirmed by National Disaster Management Organisations of each respective ASEAN Member State and other verified sources.

Indonesia

- The intermittent rain during year end of 2019 has caused massive flooding in the Jakarta Metropolitan Area (JABODETABEK: Jakarta, Bogor and Depok, Tangerang, Bekasi). According to Indonesia’s National Disaster Management Authority ([BNPB](#)), 268 locations have been flooded since yesterday, 1 January 2020, with flow depth ranging from 0,2 – 2,5 m. The floods have also caused power outage and road closures, as well as cancelled flights as in-town airport was flooded. Today’s morning 2 January 2020 at 08:00 (UTC+7), Flood Emergency Response Meeting was held and led by Lt Gen. Doni Monardo, Head of [BNPB](#).
- [BNPB](#) is actively monitoring and coordinating with other governmental agencies such as Local Disaster Management Authority (BPBD), The National Police, and The Indonesian Army to give assistance for the flood victims, particularly in supporting the evacuation process. As of yesterday’s evening, the immediate needs for the victims are:
 - Essentials: Foods, waters, and latrines.**
 - Health: Paramedics, medicines and trauma healing.**
 - Others: Rubber boats, tarpaulins, clothes.**
- The Meteorology, Climatology and Geophysics Agency ([BMKG](#)) recorded rainfall intensity on New Year’s Eve at 377 millimetres per day, according to an observation conducted at Halim Perdanakusuma Air Force Base in East Jakarta. This number is higher compared to the previous massive flooding in 2007. [BMKG](#) stated that the high rainfall intensity was due to several factors, including the occurrence of a monsoon. [BMKG](#) also forecasts that heavy rains may still continue until 7 January 2020.
- The AHA Centre has activated emergency observation request for satellite imagery, and is on stand-by if any form of assistance will be required. The centre is continuously monitoring and will issue update should there be any significant development of the situation.