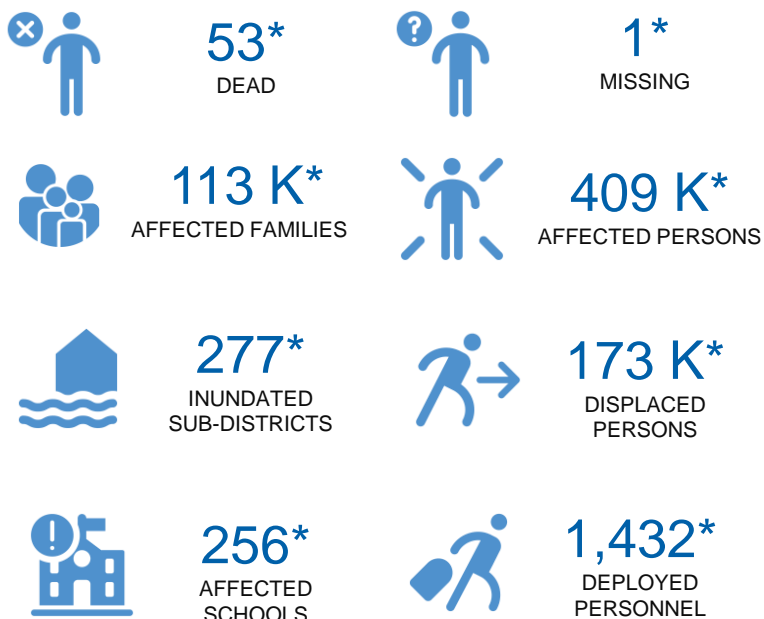


### KEY FIGURES



### RESPONSE BY BNPB



Leading national coordination with other national agencies to support the local disaster management authority (BPBD).

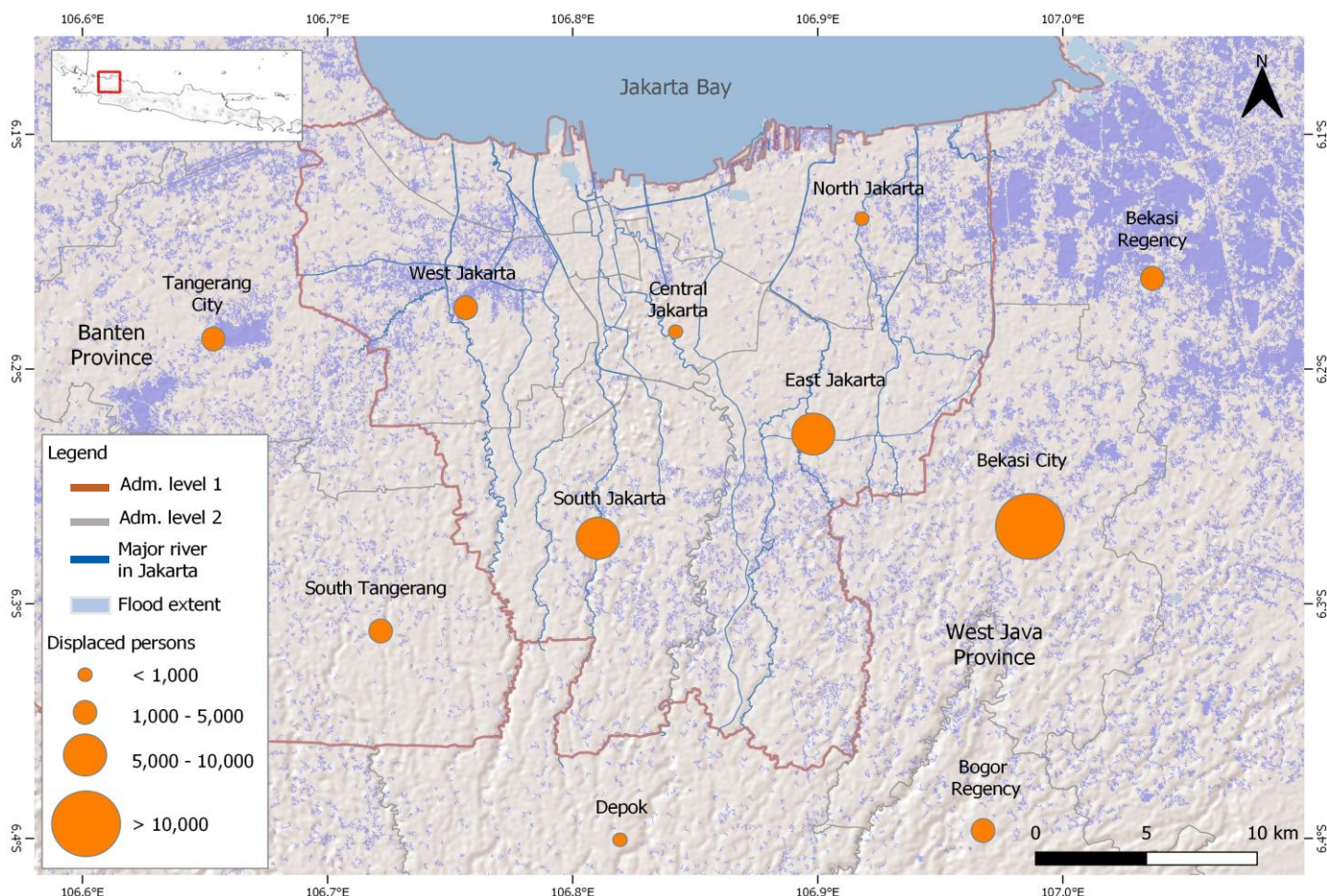


Dispatching relief items, deploying personnel, disseminating information, and establishing evacuation centres.



Coordinating with the Agency for the Assessment and Application of Technology (BPPT) for weather modification operations to decrease rainfall intensities in Greater Jakarta.

\*Estimations are based on data reported/confirmed by National Disaster Management Authority of Indonesia (BNPB) and other verified sources.



The current available preliminary result of floods extent analysis by Earth Observatory of Singapore ([EOS ARIA-SG](#)) - Member of Sentinel Asia. This data derived from synthetic aperture radar (SAR) by Copernicus Sentinel-1, taken on 2 January 2020. Further validation and analysis is necessary as this data is less reliable in the urban area. Nonetheless, based on this preliminary result, it is showed that the most massive floods extent is in Bekasi with the highest number of displaced people compare to other area. In contrary, Depok area shows the least inundation extent and the least affected persons as per this reporting period.

#### DATA SOURCES

AHA Centre Disaster Monitoring & Response System (DMRS); ASEAN Disaster Information Network; Pacific Disaster Center (PDC Global); Indonesia: National Disaster Management Authority (BNPB); Meteorology, Climatology, and Geophysical Agency (BMKG); Agency for the Assessment and Application of Technology (BPPT); Various news sources

#### DISCLAIMER

The AHA Centre was established in November 2011 by the Association of South east Asian Nations (ASEAN) and ASEAN member states to facilitate cooperation and coordination among Member States, relevant agencies of the United Nations and international organisations in disaster

management and humanitarian assistance.

The use of boundaries, geographic names, related information and potential considerations for response are for reference, not warranted to be error free or implying official endorsement from ASEAN Member States.

© 2019 AHA Centre.

All rights reserved. You are receiving this email because you are registered in our distribution list.

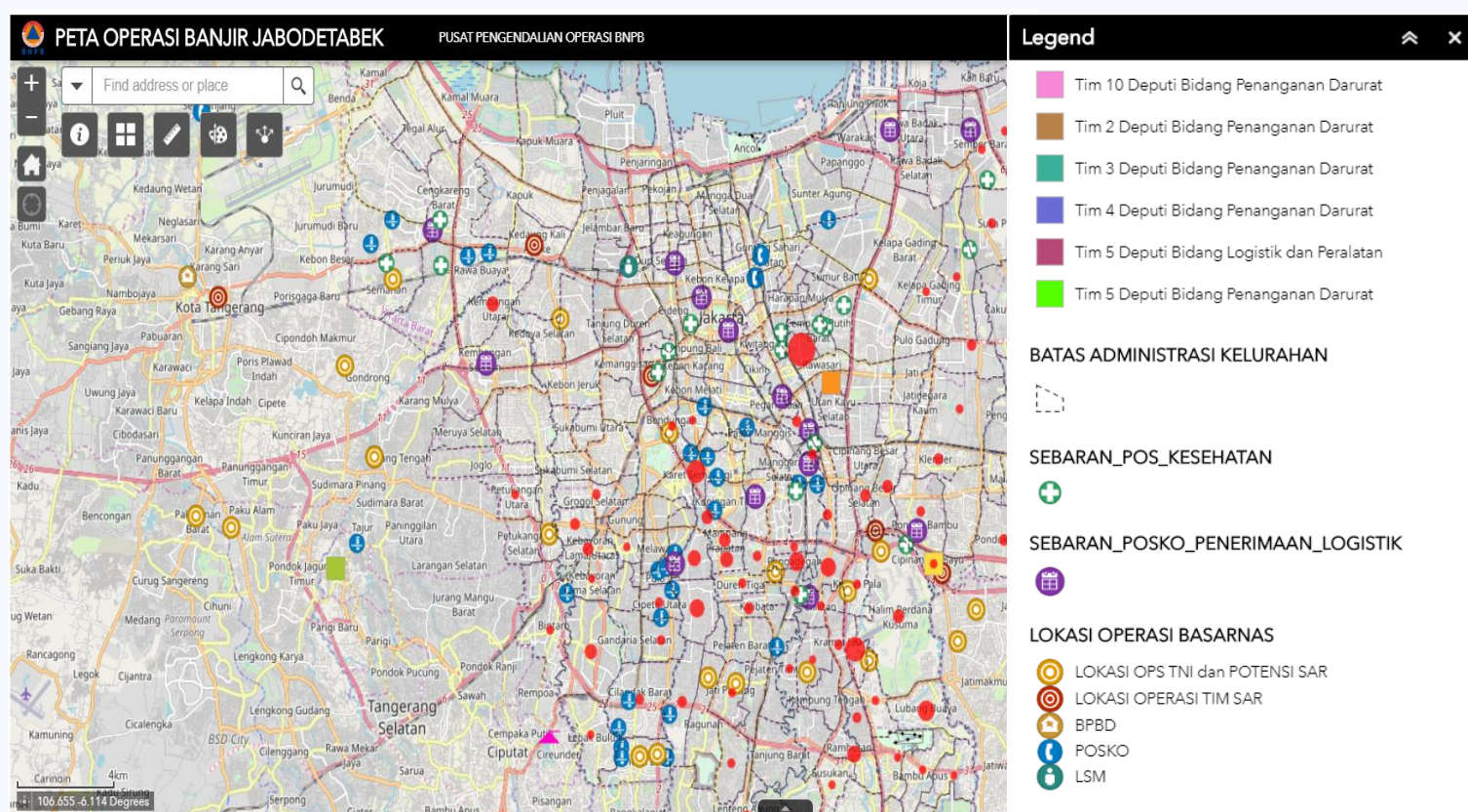
Our mailing address is:

AHA Centre,  
GRAHA BNPB 13<sup>th</sup> Floor,  
Jl. Raya Pramuka Kav. 38,  
Jakarta 13120 Indonesia





Several activities by BNPB and other governmental agencies. "Photo credits: BNPB"



The screenshot of joint portal for Greater Jakarta's floods response. "Photo credits: BNPB"

## Indonesia

- The National Disaster Management Authority of Indonesia ([BNPB](#)) has created a joint [portal](#) to gather near-real time activities and situation monitoring from the ground-zero. Apart from coordination and technical support, BNPB has also sent a letter to provincial governors and local disaster management authorities (BPBDs) to encourage respective BPBDs in heightening preparedness and disaster risk reduction efforts during the rainy season in 2020.

### DATA SOURCES

AHA Centre Disaster Monitoring & Response System (DMRS); ASEAN Disaster Information Network; Pacific Disaster Center (PDC Global); Indonesia: National Disaster Management Authority (BNPB); Meteorology, Climatology, and Geophysical Agency (BMKG); Agency for the Assessment and Application of Technology (BPPT); Various news sources

### DISCLAIMER

The AHA Centre was established in November 2011 by the Association of South east Asian Nations (ASEAN) and ASEAN member states to facilitate cooperation and coordination among Member States, relevant agencies of the United Nations and international organisations in disaster

management and humanitarian assistance.

The use of boundaries, geographic names, related information and potential considerations for response are for reference, not warranted to be error free or implying official endorsement from ASEAN Member States.

© 2019 AHA Centre.  
All rights reserved.  
You are receiving this email because you are registered in our distribution list.

Our mailing address is:  
AHA Centre,  
GRAHA BNPB 13<sup>th</sup> Floor,  
Jl. Raya Pramuka Kav. 38,  
Jakarta 13120 Indonesia