



ONE ASEM  
ONE RESPONSE

# WEEKLY DISASTER UPDATE

Week 19  
04 – 10 May 2020



The AHA Centre, GRAHA BNPB 13th floor,  
Jl. Raya Pramuka Kav. 38, East Jakarta 13120 Indonesia

## SOURCES

ASEAN Disaster Monitoring & Response System (DMRS);  
ASEAN Specialised Meteorological Centre (ASMC); Pacific  
Disaster Center (PDC Global); Joint Typhoon Warning  
Center (JTWC)

Indonesia: BNPB, BMKG, PVMBG;  
Philippines: PHIVOLCS, PAG-ASA  
Thailand: DDPM

Various news agencies

## DISCLAIMER

The AHA Centre was established in November 2011 by the  
Association of Southeast Asian Nations (ASEAN) Member  
States to facilitate cooperation and coordination among  
Member States, relevant agencies of the United Nations  
and international organisations in disaster management and  
emergency response.

This update consists of significant natural disaster events  
that occurred in ASEAN Member States – Brunei  
Darussalam, Cambodia, Indonesia, Lao PDR, Malaysia,  
Myanmar, Philippines, Singapore, Thailand, and Viet Nam.  
The disasters reported include Drought, Flood, Earthquake,  
Tsunami, Volcano, Wind, Landslide, and Storm.

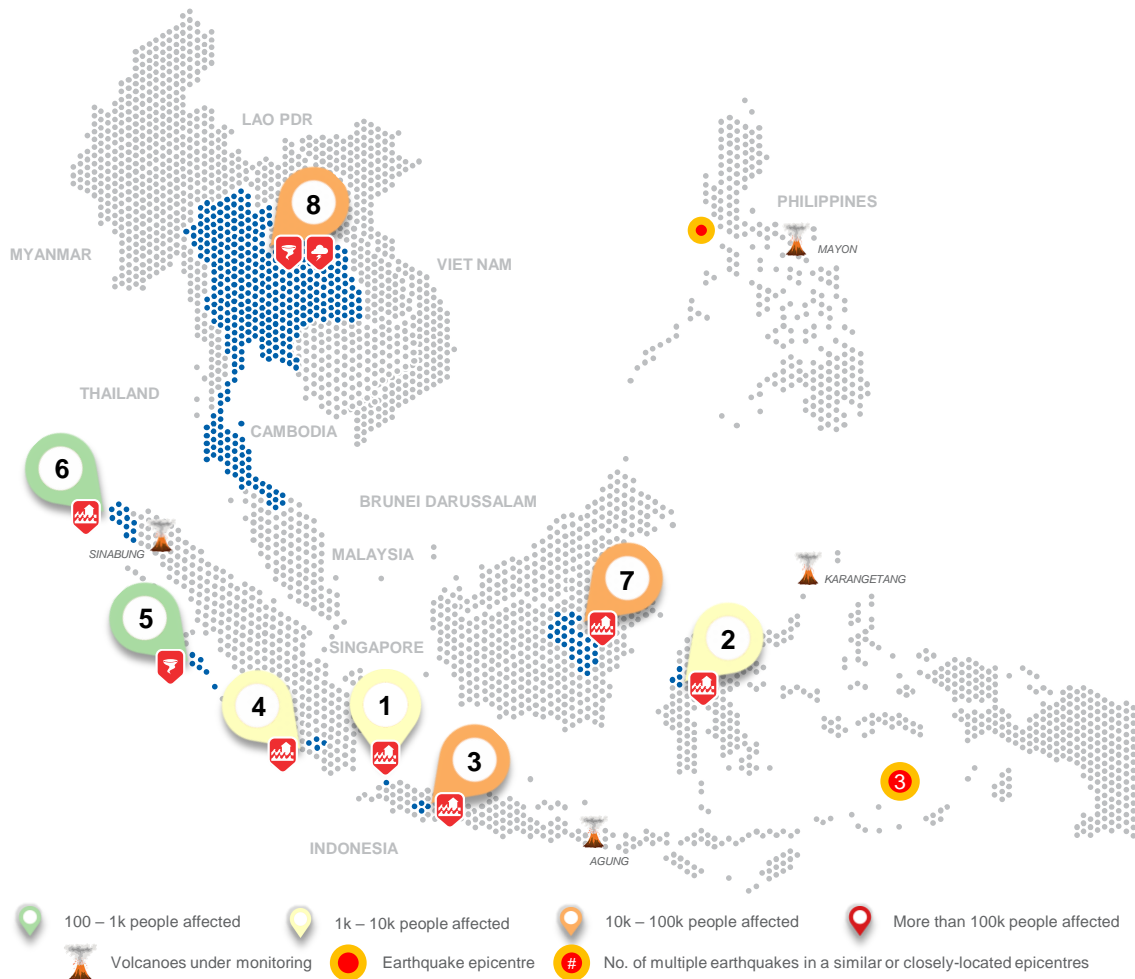
The use of boundaries, geographic names, related  
information, and potential considerations for response are  
for references, not warranted to be error-free or implying  
official endorsement from ASEAN Member States.

© 2020 AHA Centre.  
All rights reserved.

For inquiries, comments, and/or suggestions,  
you may reach us through [dms@ahacentre.org](mailto:dms@ahacentre.org)



SCAN TO SUBSCRIBE



## REGIONAL TALLY



Note: Estimations are based on data reported/confirmed by National Disaster  
Management Organisations of each respective ASEAN Member State and  
other verified sources

### Indonesia

#### 01 Flooding in Cilegon City, Banten

04 May 2020 | More details at:  
<http://adinet.ahacentre.org/reports/view/1631>

#### 02 Flooding in Pasangkayu Regency, West Sulawesi

05 May 2020 | More details at:  
<http://adinet.ahacentre.org/reports/view/1632>

#### 03 Flooding in Bandung Regency, West Java

05 May 2020 | More details at:  
<http://adinet.ahacentre.org/reports/view/1633>

#### 04 Flooding in South Ogan Komereng Ulu Regency, South Sumatra

08 May 2020 | More details at:  
<http://adinet.ahacentre.org/reports/view/1634>

#### 05 Winds in Mentawai Islands Regency, West Sumatra

08 May 2020 | More details at:  
<http://adinet.ahacentre.org/reports/view/1639>

#### 06 Flooding in Aceh Jaya Regency, Aceh

08 May 2020 | More details at:  
<http://adinet.ahacentre.org/reports/view/1635>

#### 07 Flooding in Central Kalimantan

08 May 2020 | More details at:  
<http://adinet.ahacentre.org/reports/view/1636>  
<http://adinet.ahacentre.org/reports/view/1637>

#### Thailand

#### 08 Thunderstorms in North, Northeastern, Eastern, Central, and Southern Thailand

09 May 2020 | More details at:  
<http://adinet.ahacentre.org/reports/view/1638>

A complete list of disaster reports can be  
accessed at:  
<http://adinet.ahacentre.org>

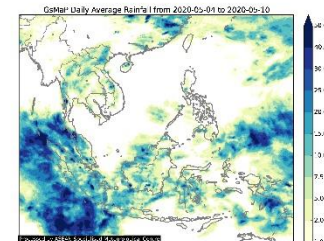
## REGIONAL SUMMARY:

High-intensity rainfall was reported in several parts of Indonesia, resulting in localised flooding events. Meanwhile, thunderstorms in Thailand were reported to have damaged around 10,000 houses and have caused two (2) casualties and injuries. Storm warnings have also been issued in Malaysia, Singapore, and Viet Nam. Volcanic activities have recently been observed for Ibu and Sangeang Volcanoes in Indonesia and both remain under Alert Level II (Waspada). Meanwhile, four (4) significant earthquakes ( $M \geq 5.0$ ) were recorded in the region.

## HIGHLIGHT:

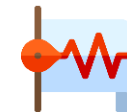
The ASEAN Disaster Monitoring and Response System (DMRS) has issued storm warnings in Thailand, Malaysia, Viet Nam, and Singapore. Additionally, Indonesia's Badan Nasional Penanggulangan Bencana (BNPB) through its local arms, reported significant numbers (approximately 145,000) of affected people in Central Kalimantan due to rains with high intensity since 30 April 2020. The Thailand Department of Disaster Prevention and Mitigation (DDPM) have reported that thunderstorms have affected 10,092 families in the country since 29 April to 09 May 2020. The Philippine Atmospheric, Geophysical and Astronomical Services Administration (PAG-ASA) has reported that the low-pressure area "INVEST 95W" (as monitored by the [Joint Typhoon Warning Center](#)) has developed into a tropical depression (TD)—TD Ambo, on 10 May 2020 14:00 PHT.

## HYDRO-METEO-CLIMATOLOGICAL:



The ASEAN Specialised Meteorological Centre (ASMC) reported the continued prevalence of dry weather over northern Southeast Asia and wetter conditions in the western and south-eastern parts of the region (ASMC). Rain showers with high intensity have been observed in Northern Sumatra and Central Kalimantan.

## GEOPHYSICAL:



There were four (4) significant earthquakes ( $M \geq 5.0$ ) reported to have occurred in the region. Meanwhile, two (2) volcanoes in Indonesia have recently showed volcanic activity but remain on alert level II (Waspada)—Ibu and Sangeang. Three (3) active volcanoes in Indonesia (PVMBG) on alert level III (Siaga) and one (1) active volcano in the Philippines (PHIVOLCS) on alert level 2 are all under monitoring.

## OUTLOOK:



The ASEAN Specialised Meteorological Centre (ASMC) forecasts a small increase in chance of a very heavy rainfall events happening in the region for the following week. This is forecasted over parts of the equatorial region particularly Sumatra and Borneo.