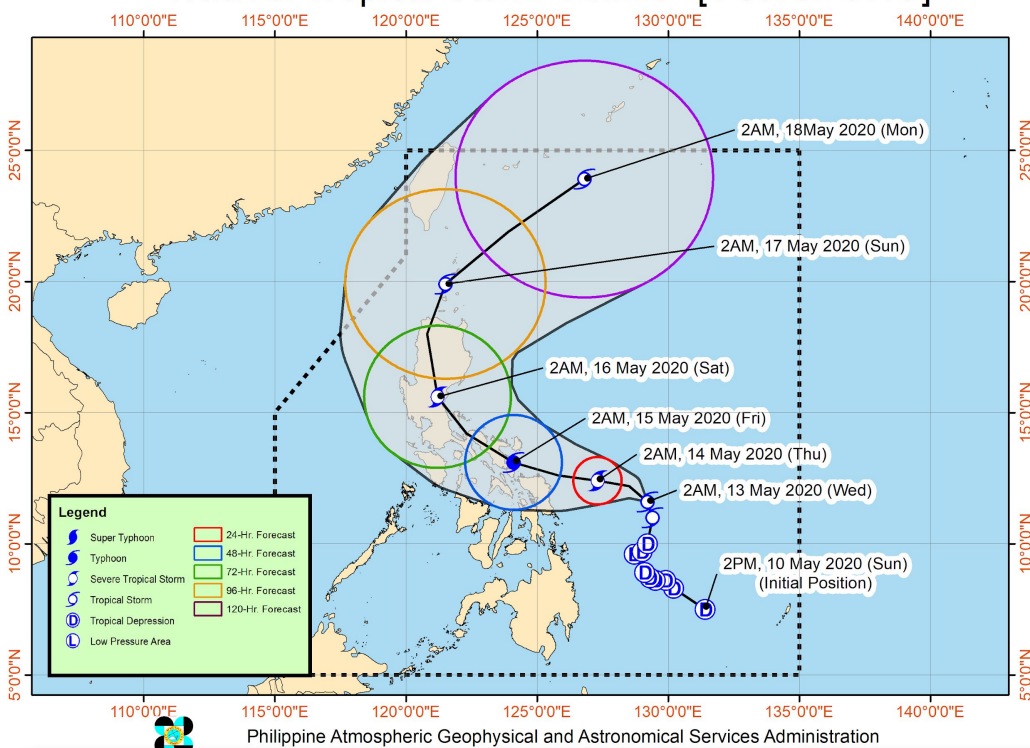


TROPICAL STORM "VONGFONG" PHILIPPINES FLASH UPDATE #1

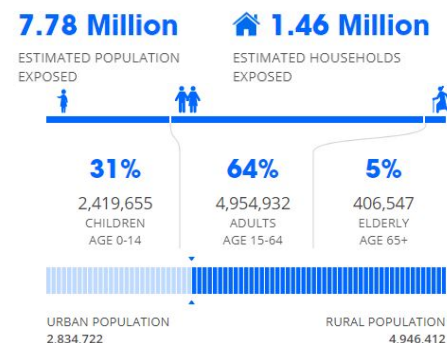


ONE ASEAN ONE RESPONSE

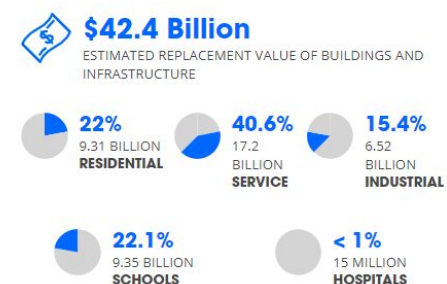
Track of Tropical Storm "AMBO" [VONGFONG]



POPULATION EXPOSED



CAPITAL EXPOSED



PDC | GLOBAL Estimated exposure by the [PDC](#)

Philippines

- Tropical Depression 01W (ONE), which formed on 10 May 2020 in the Western North Pacific Area in the Philippine area of Responsibility (PAR), has intensified into a Tropical Storm (TS) named VONGFONG as of 12 May 2020 (locally named AMBO).
- According to the Philippine Atmospheric, Geophysical and Astronomical Services Administration ([PAGASA](#)), at 1100 HRS UTC +8 13 May 2020, TS VONGFONG was estimated to be at 360 km East of Borongan City, Eastern Samar (11.9 °N, 128.7 °E) with maximum sustained winds of up to 85 km/h near the center and gustiness of up to 105 km/h.
- It is moving Northwest slowly according to PAGASA, and its center is forecasted to make landfall along the shores of/near Catanduanes, as a Category 2 hurricane with sustained winds of about 176 km/h within the next 79 hours according to the Pacific Disaster Center ([PDC](#)).
- Tropical Cyclone Wind Signal no. (TCWS) #1 has been raised over the Northern and Eastern portions of Eastern Samar on 0400 HRS UTC +8 13 May 2020. Winds of 30-60 km/h may be expected in at least 36 hours or intermittent rain may be expected within 36 hours.
- PAGASA forecasts that TS VONGFONG may further intensify as it approaches the Eastern Visayas-Bicol Region area.
- Based on the Pacific Disaster Center's ([PDC](#)) hazard brief, 4.71 Million people, 890,114 households, and \$26 Billion (USD) of infrastructure* are **potentially exposed to moderate to severe damaging winds** (with damage expected closer to the shores). All shorelines in the path of the storm are exposed to potential storm surge, and inland areas within the proximity of the storm are exposed to potential flooding.

*The cost represents total replacement value of the infrastructure

DATA SOURCES

ASEAN Disaster Monitoring & Response System (DMRS); ASEAN Specialised Meteorological Centre (ASMO); Pacific Disaster Center (PDC Global); Philippines: Philippine Atmospheric, Geophysical and Astronomical Services Administration (PAGASA)

DISCLAIMER

The AHA Centre was established in November 2011 by the Association of Southeast Asian Nations (ASEAN) Member States to facilitate cooperation and coordination among the Member States, relevant agencies of the United Nations, and international organisations in disaster management and humanitarian assistance. The use of boundaries, geographic names, related information and potential considerations for response are for reference, not warranted to be error free or implying official endorsement from ASEAN Member States.

© 2020 AHA Centre. All rights reserved. You are receiving this email because you are registered in our distribution list.

Our mailing address is: AHA Centre, GRAHA BNPB 13th Floor, Jl. Raya Pramuka Kay. 38, Jakarta 13120 Indonesia