



ONE ASEAN
ONE RESPONSE

WEEKLY DISASTER UPDATE

Week 29
13 – 19 Jul 2020



The AHA Centre, GRAHA BNPB 13th floor,
Jl. Raya Pramuka Kav. 38, East Jakarta 13120 Indonesia

SOURCES

ASEAN Disaster Monitoring & Response System (DMRS);
ASEAN Specialised Meteorological Centre (ASMC); Pacific
Disaster Center (PDC-Global); Joint Typhoon Warning
Center (JTWC);

Indonesia: BNPB, BMKG, PVMBG;
Malaysia: NADMA

Various news agencies

DISCLAIMER

The AHA Centre was established in November 2011 by
the Association of Southeast Asian Nations (ASEAN)
Member States to facilitate cooperation and coordination
among Member States, relevant agencies of the United
Nations and international organisations in disaster
management and emergency response.

This update consists of significant natural disaster events
that occurred in ASEAN Member States – Brunei
Darussalam, Cambodia, Indonesia, Lao PDR, Malaysia,
Myanmar, Philippines, Singapore, Thailand, and Viet Nam.
The disasters recorded include Drought, Flood, Earthquake,
Tsunami, Volcano, Wind, Landslide, and Storm.

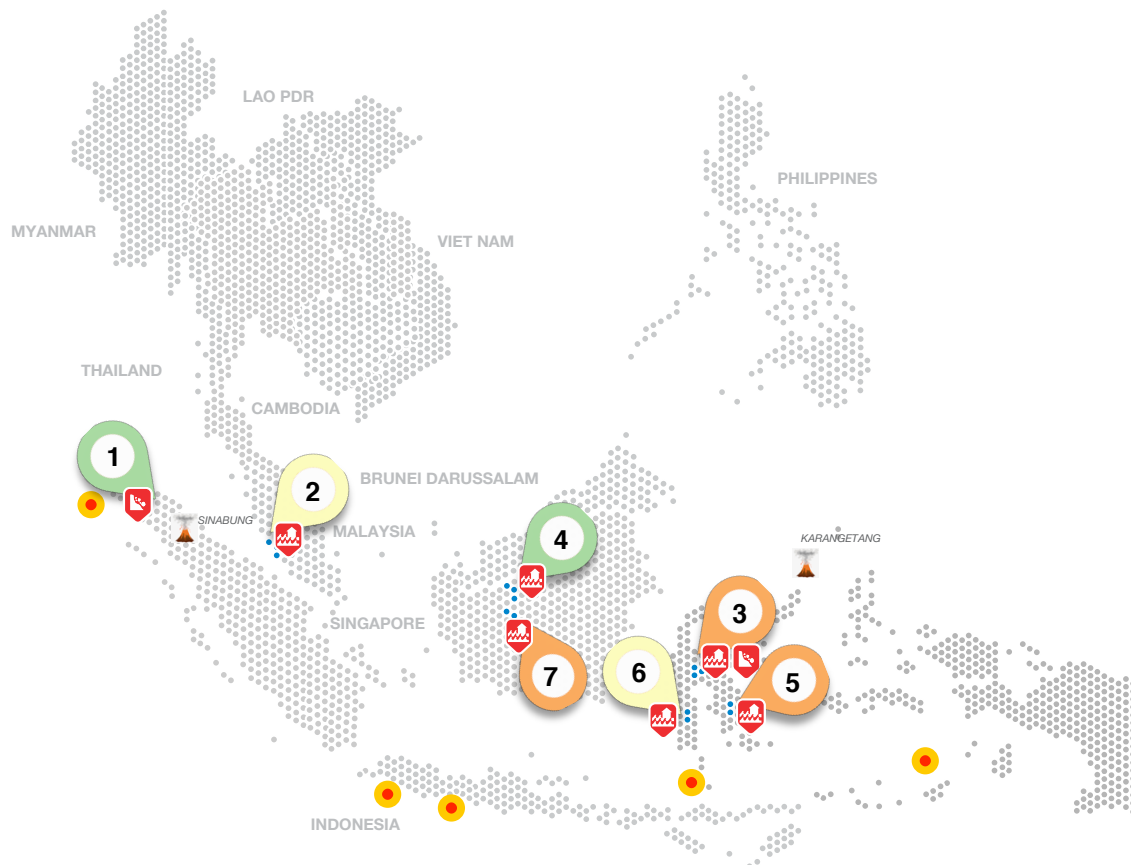
The use of boundaries, geographic names, related
information, and potential considerations for response are
for references, not warranted to be error-free or implying
official endorsement from ASEAN Member States.

© 2020 AHA Centre.
All rights reserved.

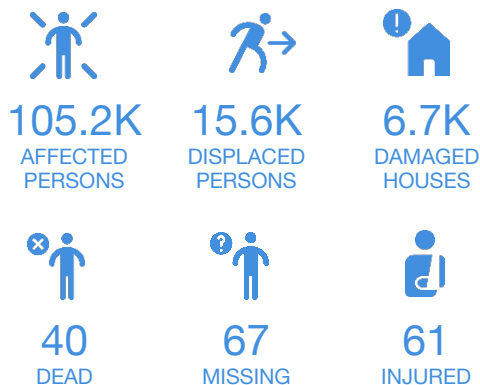
For inquiries, comments, and/or suggestions,
you may reach us through dma@ahacentre.org

You are receiving this email because you are
registered in our distribution list.

SCAN TO SUBSCRIBE



REGIONAL TALLY



Note: Estimations are based on data reported/confirmed by National
Disaster Management Organisations of each respective ASEAN Member
State and other verified sources

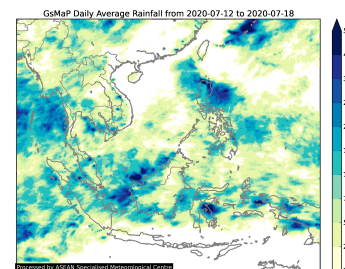
REGIONAL SUMMARY:

Multiple flooding and landslide events have occurred due to high-intensity rainfall in Indonesia as reported by Indonesia's Badan Nasional Penanggulangan Bencana (BNPB). Meanwhile, flooding was also reported in peninsular Malaysia (NADMA).

HIGHLIGHT:

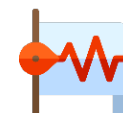
South Sulawesi, Indonesia has been impacted by several flooding events during week 29. The most severely impacted region was North Luwu regency which was hit by flash flooding induced by high intensity rainfall in Masamba, Sabbang, Baebunta, South Baebunta, Malangke, and West Malangke Sub-districts. 4,202 houses are affected or 14,438 people are affected, 36 fatalities, 67 missing, 58 injured. The mayor of North Luwu has declared state of emergency for the period of 12 Jul – 14 Aug 2020.

HYDRO-METEO-CLIMATOLOGICAL:



The ASEAN Specialised Meteorological Centre (ASMC) reported that In the second two-weeks of July 2020, wetter conditions are expected over much of the equatorial region of Southeast Asia. The likelihood of these wetter conditions is similar for both weeks in the central and eastern equatorial region (Borneo, eastern Indonesia).

GEOPHYSICAL:



Five (5) significant earthquakes ($M \geq 5.0$) were recorded in the region by Indonesia's BMKG. Meanwhile, two (2) volcanoes in Indonesia (Karangetang and Sinabung) under Alert Level III - Siaga (PVMBG) are under close monitoring. Mt. Agung which was on on Level III last week has its status reduced to Level II based on PVMBG. Lastly, Raung, Semeru and Dukono in Indonesia remain on Alert Level II despite recent volcanic activity per PVMBG.

OUTLOOK:



According to ASMC, in Week 3 of July, wetter conditions are more likely for Sumatra and the southern Malay Peninsula, while in Week 4, wetter conditions are more likely for southern Thailand and southern Myanmar. In northern Southeast Asia, drier conditions are expected over much of this region in Week 3, and becoming confined to western Myanmar in Week 4. During Week 3, the largest dry anomalies are expected over Myanmar, Lao PDR, and the northern Philippines. Warmer conditions are expected over northern Southeast Asia, particularly in Week 3.