



ONE ASEAN
ONE RESPONSE

WEEKLY DISASTER UPDATE

Week 36
31 Aug – 6 Sep 2020



The AHA Centre, GRAHA BNPB 13th floor,
Jl. Raya Pramuka Kav. 38, East Jakarta 13120 Indonesia

SOURCES

ASEAN Disaster Monitoring & Response System (DMRS);
ASEAN Specialised Meteorological Centre (ASMC); Joint
Typhoon Warning Center (JTWC)

Indonesia: BMKG, BNPB, PVMBG;
Philippines: PHIVOLCS
Thailand: DDPM

Various news agencies

DISCLAIMER

The AHA Centre was established in November 2011 by the
Association of Southeast Asian Nations (ASEAN) Member
States to facilitate cooperation and coordination among
Member States, relevant agencies of the United Nations
and international organisations in disaster management and
emergency response.

This update consists of significant natural disaster events
that occurred in ASEAN Member States – Brunei
Darussalam, Cambodia, Indonesia, Lao PDR, Malaysia,
Myanmar, Philippines, Singapore, Thailand, and Viet Nam.
The disasters recorded include Drought, Flood, Earthquake,
Tsunami, Volcano, Wind, Landslide, and Storm.

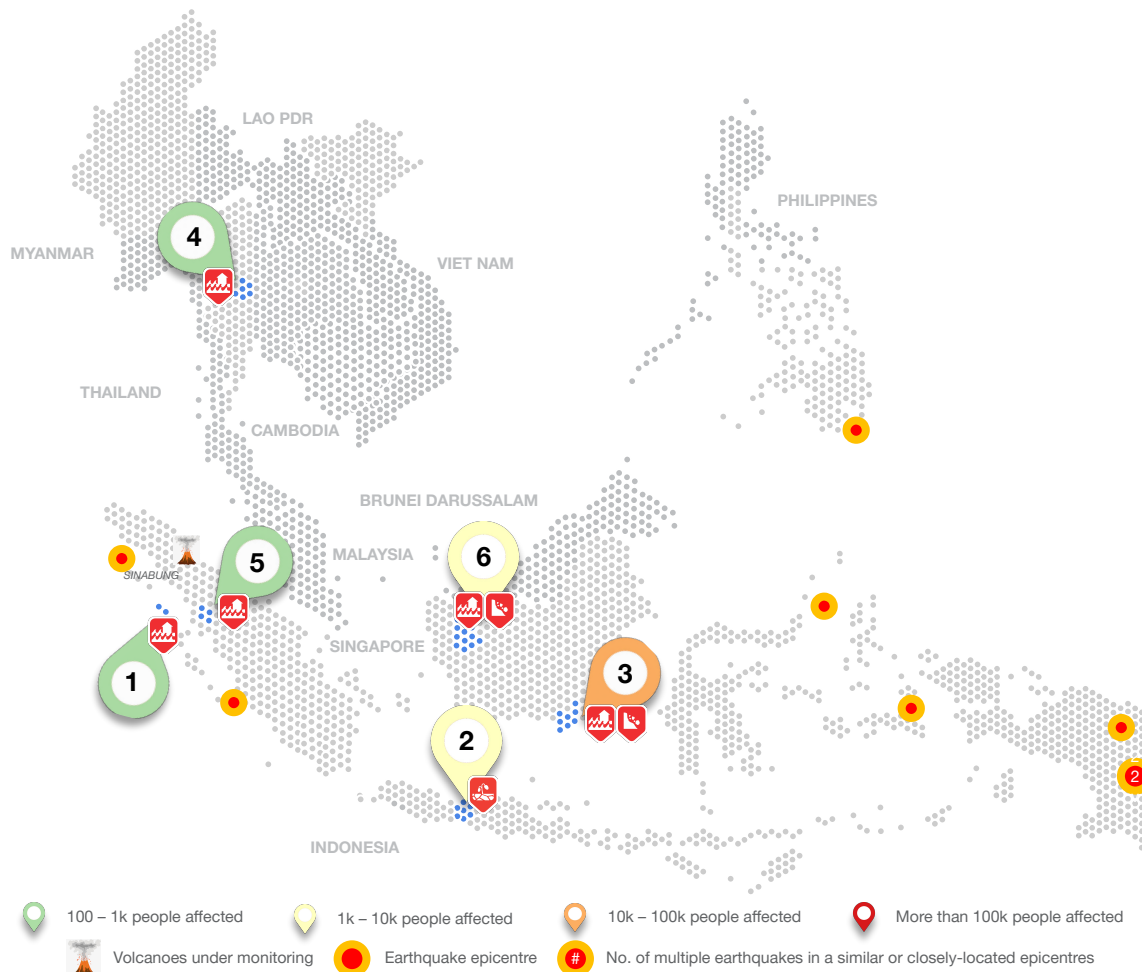
The use of boundaries, geographic names, related
information, and potential considerations for response are
for references, not warranted to be error-free or implying
official endorsement from ASEAN Member States.

© 2020 AHA Centre.
All rights reserved.

For inquiries, comments, and/or suggestions,
you may reach us through dma@ahacentre.org

You are receiving this email because you are
registered in our distribution list.

SCAN TO SUBSCRIBE



REGIONAL TALLY

23.6K
AFFECTED
PERSONS

221
DISPLACED
PERSONS

5.4K
DAMAGED
HOUSES

1
DEAD

0
MISSING

0
INJURED

Note: Estimations are based on data reported/confirmed by National
Disaster Management Organisations of each respective ASEAN
Member State and other verified sources

REGIONAL SUMMARY:

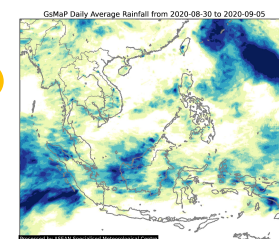
High intensity rainfall has caused multiple floodings particularly in the region of Kalimantan and Sumatra, Indonesia. 6 (six) floodings events have been recorded in Indonesia according to the report published by Badan Nasional Penanggulangan Bencana (BNPB). One drought event was also reported in Central Java Province of Indonesia.

Meanwhile in Thailand, According to Thailand's Department of Disaster Prevention and Mitigation (DDPM), the flood situation in 11 northern provinces had already improved, however Sukhothai and Phitsanulok remained flooded. The water level was 20 centimeters high but has gradually subsided. It is expected that the situation will return to normal on this week.

HIGHLIGHT:

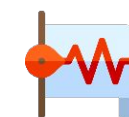
According to report published by BNPB, high intensity rainfall and the overflowing of Satui river in Tanah Bumbu Regency, South Kalimantan has caused flooding which affected 11 villages in 2 sub-districts in the regency. The flood was reported to affect 8 ha of paddy field and 155 ha of agricultural field in Satui sub-districts. The flooding affected 3,854 families or 12,584 people, at least 60 families or 221 people in Satui sub-districts were displaced. The rapid response team of BPBD has conducted rapid assessment and coordinated with local institution. The water height was reported at 150 cm in Satui sub-district.

HYDRO-METEO-CLIMATOLOGICAL:



The ASEAN Specialised Meteorological Centre (ASMC), forecasted that above-normal rainfall over most parts of the southern ASEAN region as well as over the coastal regions of Cambodia, Myanmar, Thailand and Viet Nam. Most climate models predict La Niña conditions from September 2020, which are typically associated with wetter-than-normal conditions over the Southeast Asia region.

GEOPHYSICAL:



Eight (8) significant earthquakes ($M \geq 5.0$) were recorded in the region by Indonesia's BMKG and the Philippine Institute for Volcanology and Seismology (PHIVOLCS). One (1) volcano in Indonesia (Mt. Sinabung) under Alert Level III - Siaga (PVMBG) is under close monitoring. Lastly, Mt. Dukono in Indonesia remain on Alert Level II despite recent volcanic activity per PVMBG.

OUTLOOK:



According to ASMC, for the northern part of Southeast Asia, drier conditions are predicted to persist for the first week (7 – 13 September), before returning to normal in the second week (14 – 20 September). For the equatorial region, wetter conditions are predicted in the first week, gradually easing in most places the following week, except for southern Thailand, northern Borneo and northern Sulawesi.

Warmer conditions are expected during 7 – 20 September over northern and southern parts of Southeast Asia, with closer to normal temperatures in the equatorial region (corresponding to the wetter conditions in the rainfall outlook).