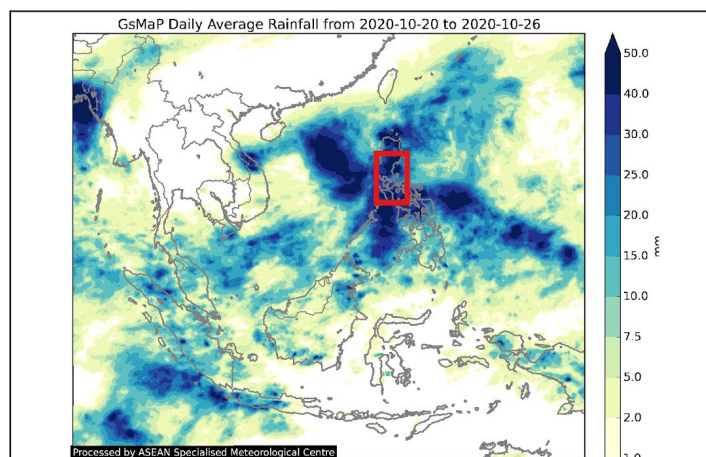


Affected Provinces Typhoon MOLAVE (local name "Quinta")

Figures are based on the Situational Report from the National Disaster Risk Reduction and Management Council of the Philippines released on 27 October 2020 at 12NN Philippine Standard time



Province	Barangays	Families	People	Evac Centres	Inside EC	Outside EC
Batangas	35	382	2001	25	1732	267
Bulacan	28	19005	76019	3	44	0
Cavite	1	3	15	1	15	0
Laguna	41	573	2180	41	2145	38
Marinduque	28	198	775	0	0	293
Nueva Ecija	3	698	2942	1	145	0
Occidental Mindoro	4	32	125	1	231	32
Oriental Mindoro	18	1018	3500	31	3284	208
Quezon	235	5819	21415	301	17621	4074
Rizal	1	1	5	1	5	0

Note: Estimations are based on data reported/confirmed by National Disaster Management Organisations of the respective ASEAN Member State and other verified sources



Philippines

- According to National Disaster Risk Reduction and Management Council ([NDRRMC](#)), **Typhoon MOLAVE** (local name "Quinta") affected a total of 27,960 families or 108,977 persons in 445 barangays in Regions III, CALABARZON and MIMAROPA.
- The [DSWD](#) also reported that there are 6,515 families or 25,222 persons taking temporary shelter in 405 evacuation centers in Regions III, CALABARZON and MIMAROPA. Meanwhile, there are reportedly 1,521 families or 4,912 persons currently staying with their relatives and/or friends in Regions CALABARZON and MIMAROPA.
- According to the [DSWD](#), a total of 223.47 USD worth of assistance was provided by the local government units to the affected families. The available standby funds amounts to a total of 6.2 million USD in the central and field offices, of which 5.4 million USD is the available Quick Response Fund (QRF).
- A total of 257,877 family food packs (FFPs) amounting to 2.4 million USD, other food items amounting to 4 million USD and non-food items (FNIs) amounting to 5.9 million USD are reportedly available.
- Regional Disaster Risk Reduction Management Councils (RDRRMC) are continuously monitoring their areas of responsibility. The RDRRMCs are in close coordination with their respective member agencies to ensure the widest dissemination of weather advisories, 24-hour forecasts, and general flood advisories.

DATA SOURCES

ASEAN Disaster Monitoring & Response System (DMRS); Pacific Disaster Center (PDC Global); Joint Typhoon Warning Center (JTWC)
Philippines: NDRRMC, DSWD, PAGASA;
Viet Nam: VNDMA

Verified news media agencies

DISCLAIMER

The AHA Centre was established in November 2011 by the Association of Southeast Asian Nations (ASEAN) Member States to facilitate cooperation and coordination among the Member States, relevant agencies of the United Nations, and international organisations in disaster management and humanitarian assistance.
The use of boundaries, geographic names, related information and potential considerations for response are for reference, not warranted to be error free or implying official endorsement from ASEAN Member States.

© 2020 AHA Centre.
All rights reserved.
You are receiving this email because you are registered in our distribution list.

Our mailing address is:
AHA Centre,
GRAHA BNPB 13th Floor,
Jl. Raya Pramuka Kav. 38,
Jakarta 13120 Indonesia

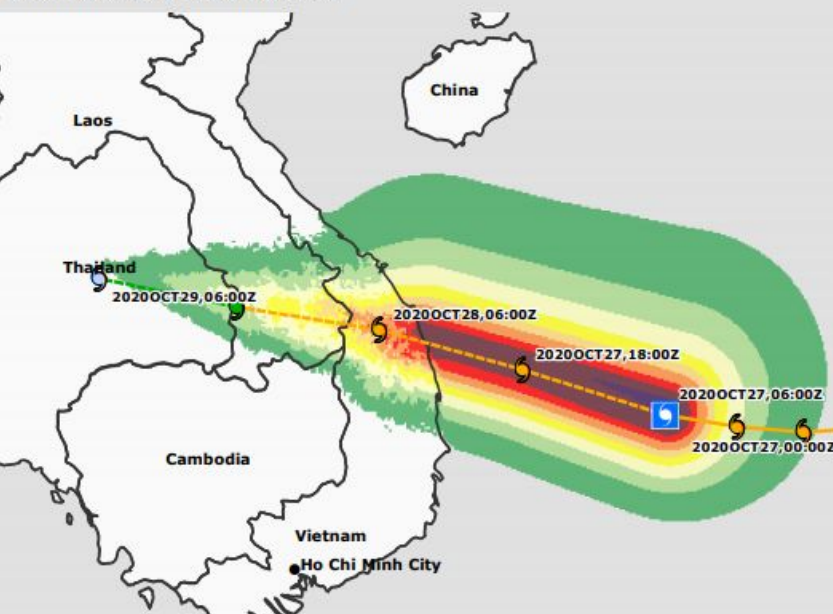
TUESDAY
27 OCT 2020
2030 HRS UTC +7

TYPHOON "MOLAVE" PHILIPPINES, VIET NAM FLASH UPDATE #2



ONE ASEAN ONE RESPONSE

Estimated Wind Impacts



Tropical Cyclone Positions

- Hurricane/Typhoon > 150 mph
- Hurricane/Typhoon > 74 mph
- Tropical Storm: 39-73 mph
- Tropical Depression: <39 mph

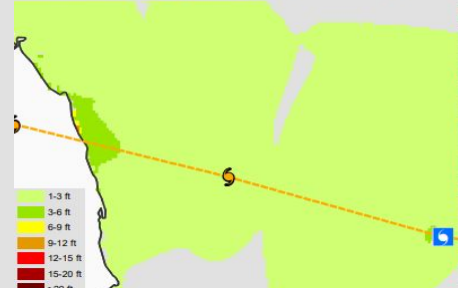
Current Cyclone Position

Est Wind Impacts (TAOS)

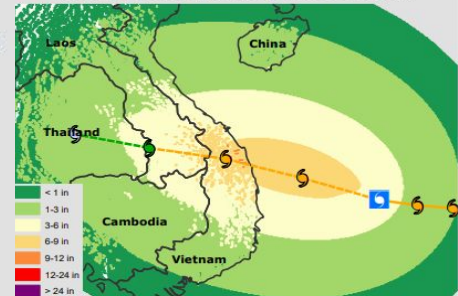
- Small Trees Sway
- Large Trees Sway
- Branches Breaking
- Trees Down; some power loss
- Minor Damage; power out
- Moderate Damage 5% of value
- Widespread Damage
- Severe Damage
- Catastrophic Damage

0 65 130 260 Miles
0 65 130 260 Kilometers

Estimated Still Water Storm Surge



Estimated Tropical Cyclone Rainfall



Disclosure(s) The information and data contained in this product are for reference only. Pacific Disaster Center (PDC) does not guarantee the accuracy of these data. Refer to original sources for any legal restrictions. Please refer to PDC Terms of Use for PDC generated information and products. The names, boundaries, colors, denominations and any other information shown on the associated maps do not imply, on the part of PDC, any judgment on the legal status of any territory, or any endorsement or acceptance of such boundaries.

ESTIMATED EXPOSURE



2 Million

ESTIMATED POPULATION
EXPOSED



517,756

ESTIMATED HOUSEHOLDS
EXPOSED



\$3.89 Billion

ESTIMATED REPLACEMENT
VALUE OF BUILDINGS AND
INFRASTRUCTURE

23.0% RESIDENTIAL
30.1% SERVICE
34.4% INDUSTRIAL
12.3% SCHOOLS
00.2% HOSPITALS

Viet Nam

- A tropical cyclone forecast has been issued by Joint Typhoon Warning Center ([JTWC](#)) on October 27, 2020, 04:00 PM UTC +7. **Typhoon - MOLAVE** is currently equivalent to a Category 3 hurricane (on the Saffir-Simpson scale)
- Location:** **MOLAVE** is located in the East Sea within 493 km from Viet Nam. Based on cyclone's centre and track, the center is expected to make landfall within the next 16 hours, along the shores of/near Quang Ngai in Viet Nam, as a Category 3 hurricane, with sustained winds of about 185 km/h.
- Strength:** Maximum sustained winds of 204 km/h, and wind gusts up to 250 km/h.
- Movement:** the cyclone is headed West at about 24 km/h, and is expected to weaken over the next 24 hours. It is cautioned, however, that the actual position may shift significantly over the next few days.
- Potential Impacts:**
 - For the extended forecast, an estimated **1.64 Million people, 428,240 households, and \$3.05 Billion (USD) of infrastructure*** are potentially exposed to moderate to severe damaging winds. Based on [PDC-Global](#)'s TAOS model, winds that can cause severe damage; at most 3.7 m of storm surge is possible; and at most 0.3 m of cumulative rainfall can be expected due to Typhoon **MOLAVE**.
- According to the Viet Nam Disaster Management Authority ([VNDMA](#)), to proactively respond to storms and limit damage, the Prime Minister requested the **Central Steering Committee for Natural Disaster Prevention and Control**, the **National Committee for Natural Disaster Response**, and **Search and Rescue, Ministries, Branches and localities** to respond according to their assigned functions and tasks and to closely monitor the developments of **Typhoon MOLAVE**.
- The areas in the forecasted track of **Typhoon MOLAVE** have been previously affected by Tropical Storms LINFA and SAUDEL, wherein the AHA Centre have previously given relief assistance. And while NANGKA didn't directly impact the area, it still brought rainfall to the already flooded regions.
- The AHA Centre will continue to monitor the situation and issue additional updates as they become available from official sources.

DATA SOURCES

ASEAN Disaster Monitoring & Response System (DMRS); Pacific Disaster Center (PDC Global); Joint Typhoon Warning Center (JTWC); Philippines: NDRRMC, DSWD, PAGASA; Viet Nam: VNDMA

Verified news media agencies

DISCLAIMER

The AHA Centre was established in November 2011 by the Association of Southeast Asian Nations (ASEAN) Member States to facilitate cooperation and coordination among the Member States, relevant agencies of the United Nations, and international organisations in disaster management and humanitarian assistance.

The use of boundaries, geographic names, related information and potential considerations for response are for reference, not warranted to be error free or implying official endorsement from ASEAN Member States.

© 2020 AHA Centre.
All rights reserved.
You are receiving this email
because you are registered in
our distribution list.

Our mailing address is:
AHA Centre,
GRAHA BNPB 13th Floor,
Jl. Raya Pramuka Kav. 38,
Jakarta 13120 Indonesia