



ONE ASEA
ONE RESPONSE

WEEKLY DISASTER UPDATE

Week 46
09 - 15 Nov 2020



The AHA Centre, GRAHA BNPB 13th floor,
Jl. Raya Pramuka Kav. 38, East Jakarta 13120 Indonesia

SOURCES

ASEAN Disaster Monitoring & Response System (DMRS);
ASEAN Specialised Meteorological Centre (ASMC); Joint
Typhoon Warning Centre (JTWC)

Indonesia: BNPB, BMKG, PVMBG;
Philippines: NDRRMC, DSWD, PHIVOLCS;
Viet Nam: VNDMA

Various news agencies

DISCLAIMER

The AHA Centre was established in November 2011 by the
Association of Southeast Asian Nations (ASEAN) Member
States to facilitate cooperation and coordination among
Member States, relevant agencies of the United Nations
and international organisations in disaster management and
emergency response.

This update consists of significant natural disaster events
that occurred in ASEAN Member States – Brunei
Darussalam, Cambodia, Indonesia, Lao PDR, Malaysia,
Myanmar, Philippines, Singapore, Thailand, and Viet Nam.
The disasters recorded include Drought, Flood, Earthquake,
Tsunami, Volcano, Wind, Landslide, and Storm.

The use of boundaries, geographic names, related
information, and potential considerations for response are
for references, not warranted to be error-free or implying
official endorsement from ASEAN Member States.

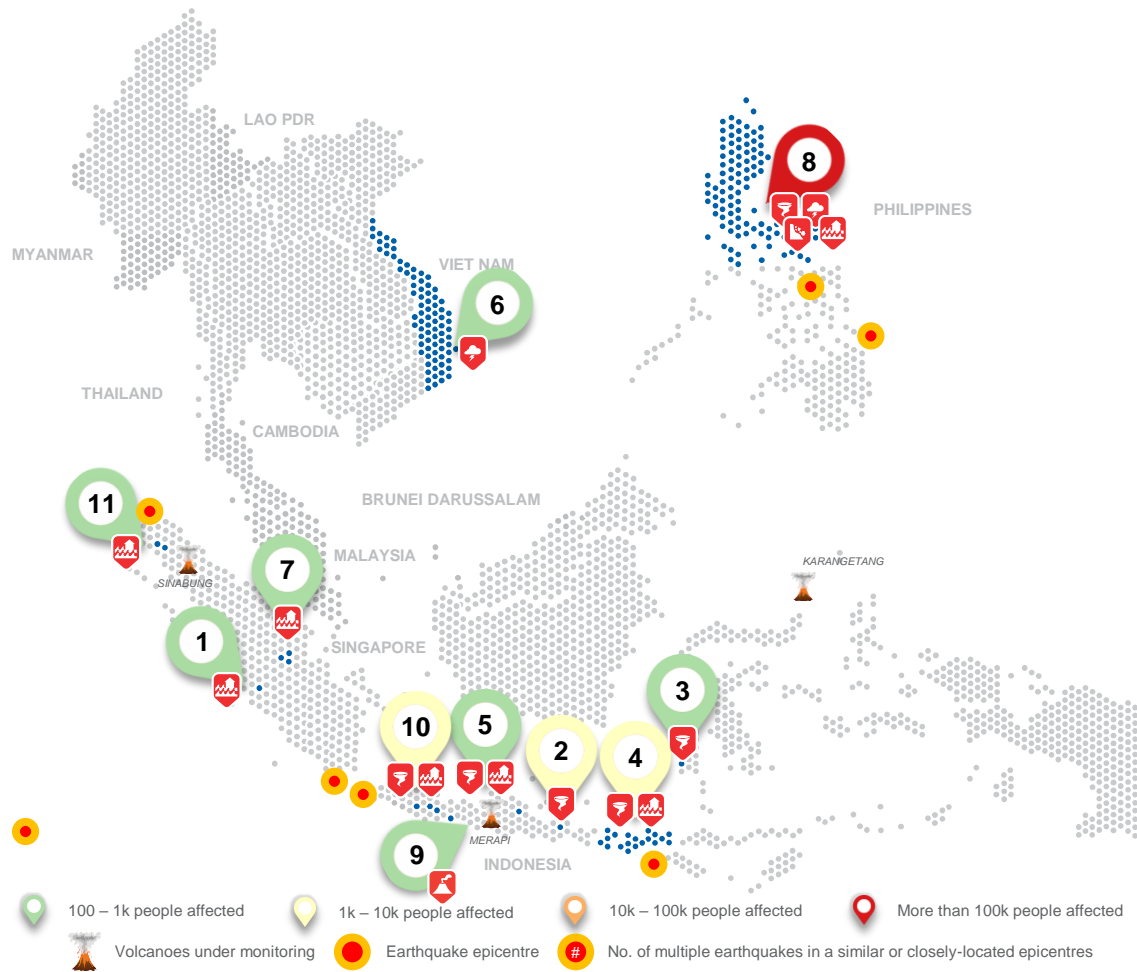
© 2020 AHA Centre.
All rights reserved.

For inquiries, comments, and/or suggestions,
you may reach us through dma@ahacentre.org



You are receiving this email because you are
registered in our distribution list.

SCAN TO SUBSCRIBE



REGIONAL TALLY



Note: Estimations are based on data reported/confirmed by National
Disaster Management Organisations of each respective ASEAN
Member State and other verified sources

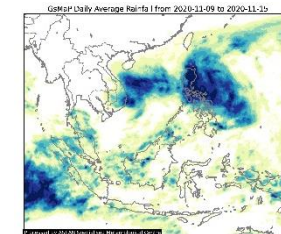
REGIONAL SUMMARY:

Multiple localized flooding events as well as strong winds reportedly affected different parts of Indonesia according to the Badan Nasional Penanggulangan Bencana (BNPB). In the Philippines, due to the effects of Typhoon VAMCO, widespread displacement of people, infrastructural and agricultural damages have been reported by the National Disaster Risk Reduction Management Council (NDRRMC) and the Department of Social Welfare and Development (DSWD). Lastly, according to reports from the Viet Nam Disaster Management Authority (VNDMA), recent tropical cyclone developments affected Viet Nam and Tropical Storm ETAU has prompted evacuation efforts in its central regions.

HIGHLIGHT:

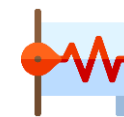
Due to the effects of Typhoon VAMCO (locally named “Ulysses”), 1.755M people (429K families) have been affected according to the report from the NDRRMC as of 15 November 2020. The NDRRMC also reported 67 deaths, 13 missing, and 21 injured people and 556K displaced into 3K evacuation centres. 26K houses, and 34.6M USD worth of damages to agriculture and infrastructure have been also been reported. Local authorities continue to closely coordinate with the concerned field offices for updates on the situation, assistance, and relief efforts. Assistance was provided to the affected families by the DSWD and the local government units. The AHA Centre is currently on RED Alert to provide support to the government of the Philippines.

HYDRO-METEO-CLIMATOLOGICAL:



For the past week, data from the ASEAN Specialised Meteorological Centre (ASMC) showed high daily average rainfall over Luzon Island in the Philippines. This is associated to the development of Typhoon VAMCO that ravaged multiple regions of the Philippines before exiting the landmass, weakening, then strengthening again before reaching Viet Nam.

GEOPHYSICAL:



Seven (7) significant earthquakes ($M \geq 5.0$) were recorded in the region by Indonesia's Badan Meteorologi Klimatologi dan Geofisika (BMKG) and the Philippine Institute for Volcanology and Seismology (PHIVOLCS). Mount Merapi (which reported recent volcanic activity), Sinabung, and Karangetang in Indonesia, all on Alert Level III, are under close monitoring. Lastly, Ibu, Semeru, and Dukono, in Indonesia remain on Alert Level II despite recent volcanic activity per PVMBG.

OUTLOOK:



For the coming week, the ASMC forecasts wetter conditions in Sumatra, Malay Peninsula, and Western Borneo; and warmer conditions for most of mainland Southeast Asia, and Java, Borneo, and Southern Sulawesi. For the regional assessment of extremes, there is a small increase in chance of a heavy rainfall event in Sumatra and Kalimantan of Indonesia, and Malay peninsula; extended dry conditions for coastal Viet Nam; and a moderate increase in chance of extreme hot conditions in southern parts of Indonesia, Borneo, and portions of the Philippines.