



ONE ASEAN
ONE RESPONSE

WEEKLY DISASTER UPDATE

Week 47

16 - 22 Nov 2020

ahacentre.org

ahacentre

@ahacentre

@ahacentre

The AHA Centre, GRAHA BNPB 13th floor,
Jl. Raya Pramuka Kav. 38, East Jakarta 13120 Indonesia

SOURCES

ASEAN Disaster Monitoring & Response System (DMRS);
ASEAN Specialised Meteorological Centre (ASMC); Joint
Typhoon Warning Centre (JTWC)

Indonesia: BNPB, BMKG, PVMBG;
Philippines: PHIVOLCS;

Various news agencies

DISCLAIMER

The AHA Centre was established in November 2011 by the
Association of Southeast Asian Nations (ASEAN) Member
States to facilitate cooperation and coordination among
Member States, relevant agencies of the United Nations
and international organisations in disaster management and
emergency response.

This update consists of significant natural disaster events
that occurred in ASEAN Member States – Brunei
Darussalam, Cambodia, Indonesia, Lao PDR, Malaysia,
Myanmar, Philippines, Singapore, Thailand, and Viet Nam.
The disasters recorded include Drought, Flood, Earthquake,
Tsunami, Volcano, Wind, Landslide, and Storm.

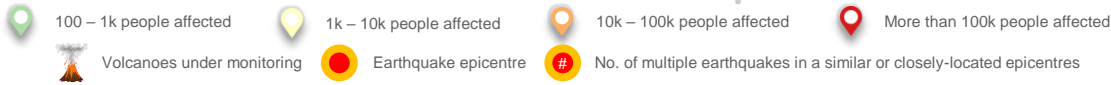
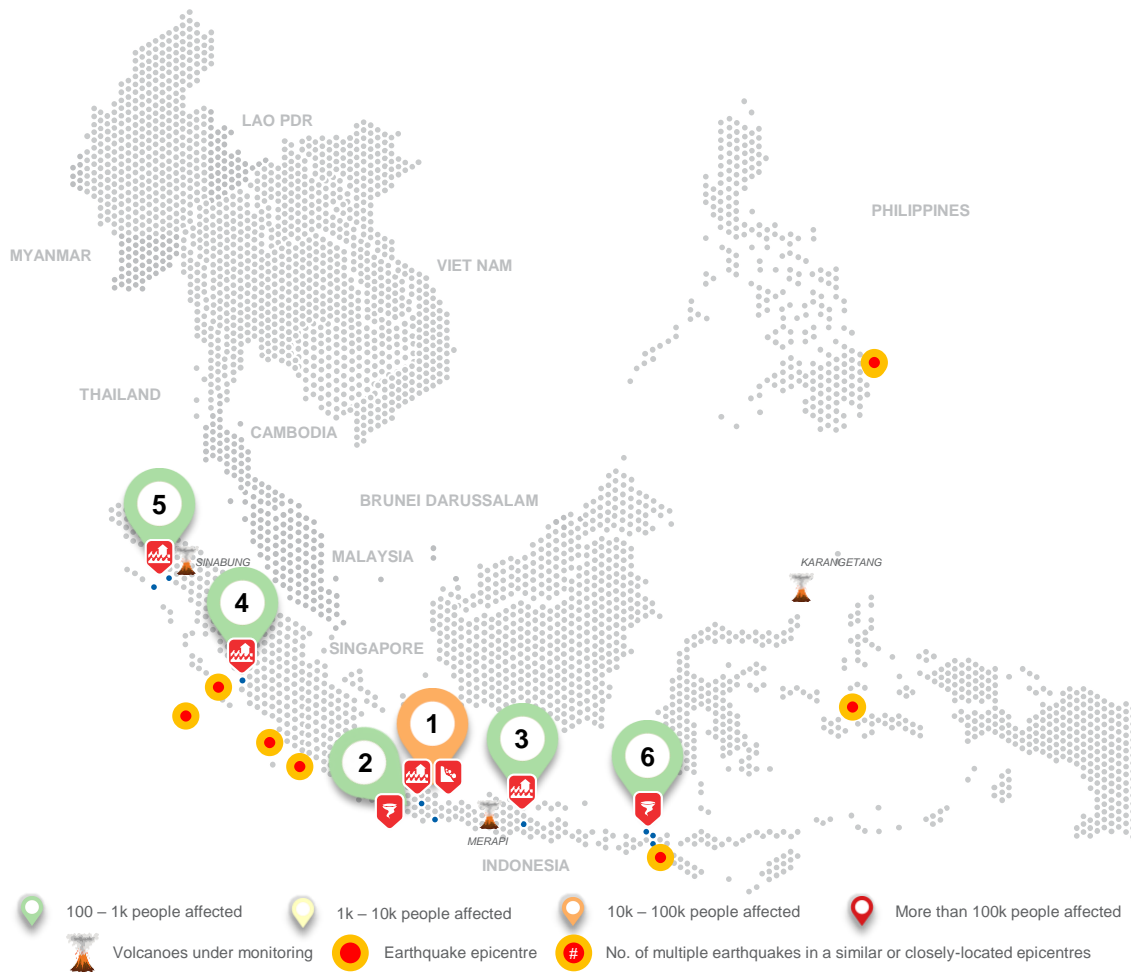
The use of boundaries, geographic names, related
information, and potential considerations for response are
for references, not warranted to be error-free or implying
official endorsement from ASEAN Member States.

© 2020 AHA Centre.
All rights reserved.

For inquiries, comments, and/or suggestions,
you may reach us through dma@ahacentre.org



SCAN TO SUBSCRIBE



REGIONAL TALLY



01 Indonesia, Flooding and Landslides in Cilacap, Central Java

17 Nov 2020 | More details at: [ADInet Report 1936](#)

02 Indonesia, Strong Winds in Bogor, West Java

18 Nov 2020 | More details at: [ADInet Report 1934](#)

03 Indonesia, Flooding in Malang City, East Java

20 Nov 2020 | More details at: [ADInet Report 1939](#)

04 Indonesia, Flooding in Padang Pariaman, West Sumatra

20 Nov 2020 | More details at: [ADInet Report 1937](#)

05 Indonesia, Flooding in Aceh Singkil, Aceh

21 Nov 2020 | More details at: [ADInet Report 1938](#)

06 Indonesia, Whirlwind in Dompu, West Nusa Tenggara

22 Nov 2020 | More details at: [ADInet Report 1940](#)

Note: Estimations are based on data reported/confirmed by National
Disaster Management Organisations of each respective ASEAN
Member State and other verified sources

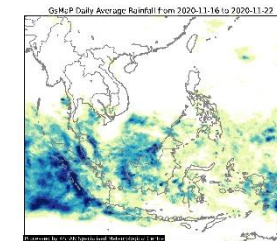
REGIONAL SUMMARY:

Multiple localised flooding events, strong winds, and landslides were reported by the Badan Nasional Penanggulangan Bencana (BNPB) in different parts of Indonesia—Cilacap (Central Java), Bogor (West Java), Malang (East Java), Padang Pariaman (West Java), Aceh Singkil (Aceh), Dompu (West Nusa Tenggara).

HIGHLIGHT:

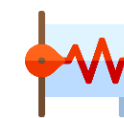
Due to high intensity rain and steep land contours on 17 Nov 2020, flooding and landslides have been reported in Cilacap Regency in Central Java Province of Indonesia. The BNPB has reported the following impacts: 2 deaths, 2.2K households (5.7K persons) displaced, 15.7K households (34.6K persons) affected. 65 housing units were reportedly damaged. As per the update on 21 Nov 2020, some areas are still flooded, and urgent needs identified were food, non-food logistics, and face masks.

HYDRO-METEO-CLIMATOLOGICAL:



For the past week, data from the ASEAN Specialised Meteorological Centre (ASMC) showed relatively low average rainfall for most of the region. However, low to high daily average rainfall can be observed for Sumatra and Papua in Indonesia, and Eastern and Peninsular Malaysia. As of reporting, the JTWC has not issued tropical cyclone advisories.

GEOPHYSICAL:



Seven (7) significant earthquakes (M≥5.0) were recorded in the region by Indonesia's Badan Meteorologi Klimatologi dan Geofisika (BMKG) and the Philippine Institute for Volcanology and Seismology (PHIVOLCS). Mount Sinabung (which reported recent volcanic activity), Merapi, and Karangetang in Indonesia, all on Alert Level III, are under close monitoring. Lastly, Ibu and Dukono, in Indonesia remain on Alert Level II despite recent volcanic activity per PVMBG.

OUTLOOK:



For the coming week, the ASMC forecasts warmer conditions for most of mainland Southeast Asia, and Java, Borneo, and Southern Sulawesi. For the regional assessment of extremes, there is a low chance of a heavy rainfall event; low chance of extended dry conditions; and a moderate increase in chance of extreme hot conditions in central and southern Myanmar, and southern Cambodia.