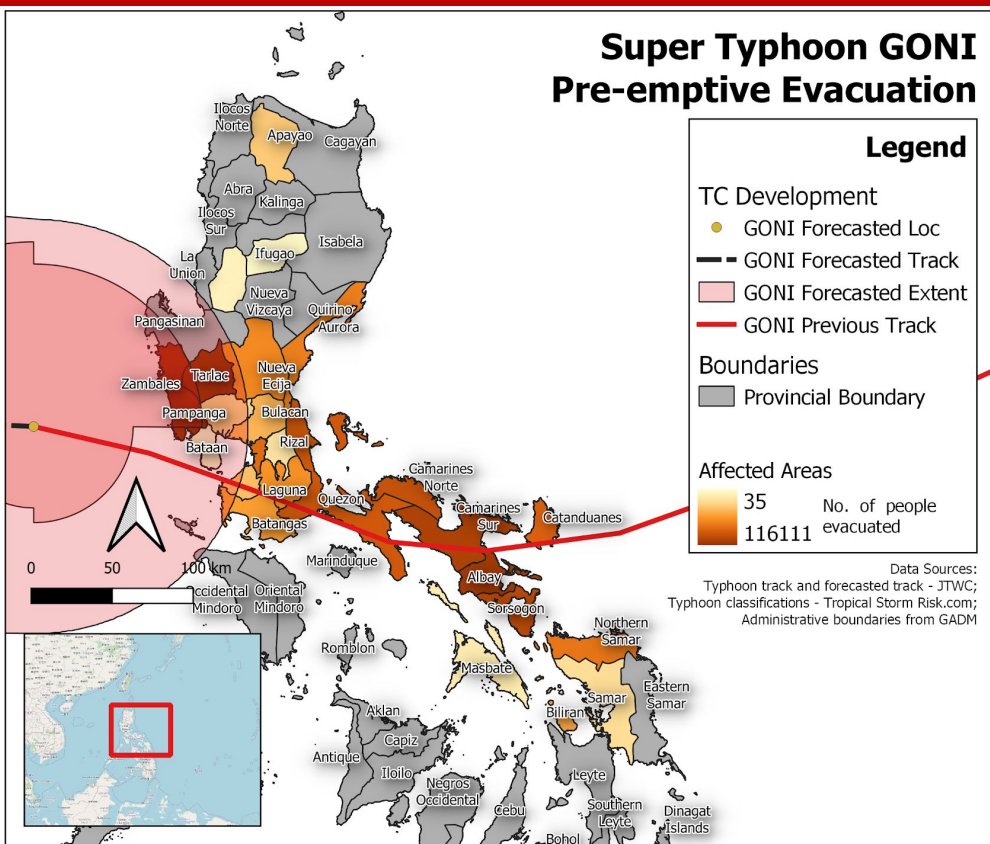
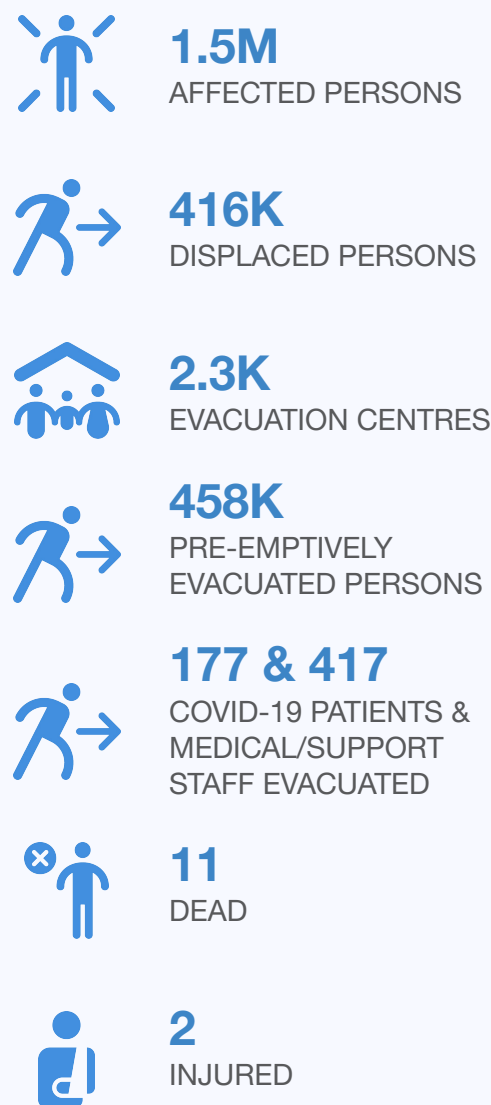


I. SUMMARY

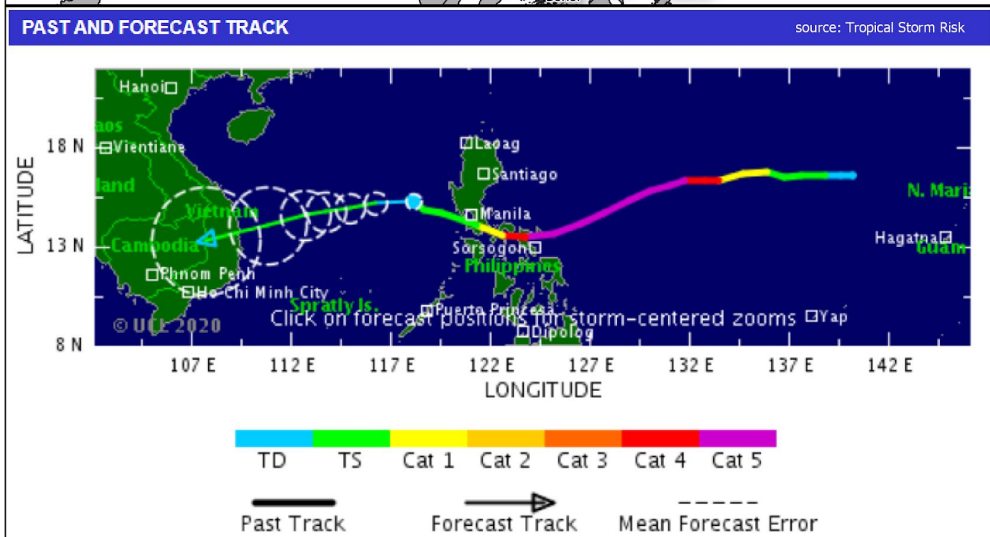
Page 1 of 4



KEY FIGURES - PHILIPPINES



Note: Estimations are based on data reported/confirmed by National Disaster Management Organisations of each respective ASEAN Member State and other verified sources



SITUATION OVERVIEW

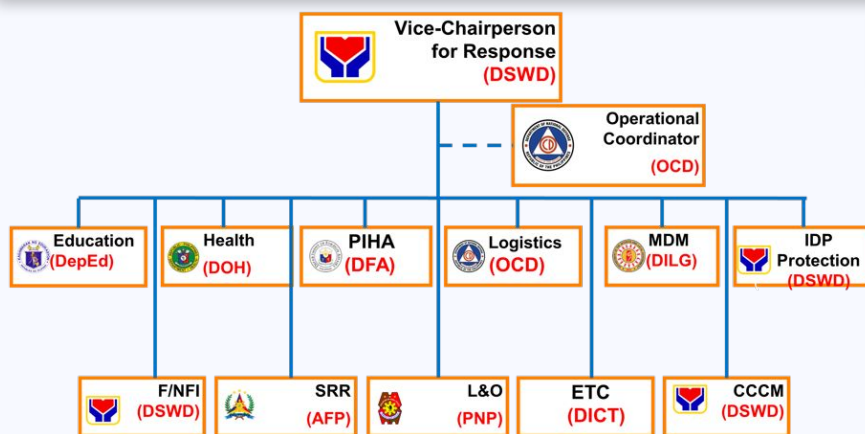
At 0350 HRS of 01 NOV 2020, Super Typhoon "GONI" made its first landfall in the vicinity of **Bato, Catanduanes (Bicol Region)** with maximum sustained winds of **225 km/h** (equivalent to **Category 4** in the Saffir-Simpson Hurricane Wind Scale) and gustiness of up to 280 km/h ([PAGASA](#)). The tropical cyclone reportedly brought direct **wind damage, storm surge hazard, flooding, landslide, lahar, mudflow, and rock slides** across its path, which resulted to **impact to the population and damage to properties and infrastructures**. Currently, the **National Disaster Risk Reduction and Management Council (NDRRMC)** is focused on **life-saving missions**, such as Search, Rescue, & Retrieval (SRR), provision of Relief Items, and restoration of Critical Lifelines.

II. PHILIPPINES - NATIONAL PREPAREDNESS & RESPONSE

Page 2 of 4

NDRRMC CURRENT PRIORITY: LIFE-SAVING MISSIONS

(Search & Rescue, Provision of Relief Items, Restoration of Critical Lifelines, etc.)



NDRRMC RESPONSE CLUSTER

- The **NDRRMC Response Cluster** was activated on **31 OCT 2020, 1600 HRS**
- Cluster Leads and Members are continuously coordinating to provide support to **sub-national Disaster Risk Reduction and Management Councils** who are leading the emergency response in their respective localities
- Coordination is conducted through **physical** (with **COVID-19 protocols**) and **virtual** means
- Region VII and VIII DRRMCs** are also put on **standby** to augment NDRRMC, if needed

NATIONAL RESPONSE CAPACITIES


\$14.5M USD
STANDBY FUNDS AVAILABLE
(OCD, DSWD, DA)


114K
FAMILY FOOD PACKS AVAILABLE IN AFFECTED AREAS



\$144K USD
WORTH OF RICE BALANCE (NFA)


\$644K USD
WORTH OF MEDICAL SUPPLIES/LOGISTICS (DOH)

- Search, Rescue, and Retrieval operations**, led by the Philippine Military, are currently ongoing
- The **NDRRMC Rapid Damage Assessment and Needs Analysis (RDANA) Team** is scheduled to be deployed to Catanduanes on 04 NOV 2020

AIR	
	
TOTAL	8
Fixed Wing	2
Rotary	6
Air Force	5
Army Aviation Regiment	3

WATER	
	
TOTAL	66
Boats	66
Coast Guard	33
BFP	8
MMDA	25

LAND	
	
TOTAL	40
Ambulances	17
Trucks	23
BFP	19
MMDA	14
DSWD	7

- As part of its preparedness plans, the NDRRMC identified its **Logistics Hubs** across the areas in the super typhoon track
- A **Transportation Plan** for Relief Items, which include different Governmental, Non-Governmental, and Private Organisations, is also identified and ready
- A **Service Plan** to quickly restore critical infrastructures is also identified and currently being implemented

AHA CENTRE SUPPORT

- The AHA Centre activated its **In-Country Liaison Team (ICLT)**, who is currently stationed in the NDRRMC Operations Centre, to **facilitate operational coordination** with the NDRRMC through the **Office of Civil Defense (OCD)**.
- The AHA Centre offered to augment the national response capacities of the NDRRMC through the **mobilisation of regional stockpiles** in the **Disaster Emergency Logistics System for ASEAN (DELSA) Satellite Warehouse in Camp Aguinaldo, Philippines**.
- If needed, the AHA Centre also stands ready to provide **remote Information Management support** and **facilitate the deployment of ASEAN assets and capabilities**, including but not limited to airlift capabilities.

II. PHILIPPINES - STATUS OF CRITICAL LIFELINES

Page 3 of 4

TRANSPORTATION

AIRPORTS

- NAIA, **Metro Manila** (national hub) is **operational**
- Clark Airport, **Pampanga** (alternate national hub) is **operational**
- Virac Airport, **Catanduanes** is **operational** for emergency response operations
- Legazpi Airport, **Albay** is **operational** for emergency response operations
- Naga Airport, **Camarines Sur** is temporarily **not operational**
- Sangley Airport, **Cavite** is **operational** for emergency response operations

SEAPORTS

- Bicol - **operational**
 - **Albay** (Legazpi)
 - **Sorsogon** (Bulan, Matnog)
 - **Masbate** (all)
- CALABARZON - **operational**
 - **Batangas** (all)
 - **Quezon** (all)
- MIMAROPA - **operational**
 - **Mindoro** (Calapan)
 - **Marinduque** (all)

ROADS & BRIDGES

- 19 road sections affected
 - 4 sections are **already passable**
 - 15 sections are **still being cleared**
 - Bicol, CALABARZON, Cagayan Valley, CAR, Central Luzon
- 4 bridges
 - 4 bridges are **still being cleared**
 - Cagayan Valley

TELECOMMUNICATIONS

- **46 cities/municipalities** reportedly experienced telecommunications network interruptions
- Bicol
 - Whole province of **Albay**
 - Whole province of **Catanduanes** (first landfall) - the NDRRMC Emergency Telecommunications Team already **re-established** communication links
 - 10 out of 21 cities/municipalities in **Masbate**
- CALABARZON
 - **Guinayangan, Quezon**
- MIMAROPA
 - Whole province of **Marinduque**



Telecommunications link to Catanduanes was re-established by the NDRRMC Emergency Telecommunications Team on 02 Nov 2020.
Photo Source: Philippine Star

POWER

- **147 cities/municipalities** reportedly experienced power interruptions/outages
- Bicol
 - Whole provinces of **Albay, Camarines Norte, Camarines Sur, Catanduanes, and Masbate**
- CALABARZON
 - Portions of **Cavite, Laguna, Rizal, and Quezon**
- MIMAROPA
 - Portions of **Marinduque**
- Eastern Visayas
 - Portions of **Northern Samar**

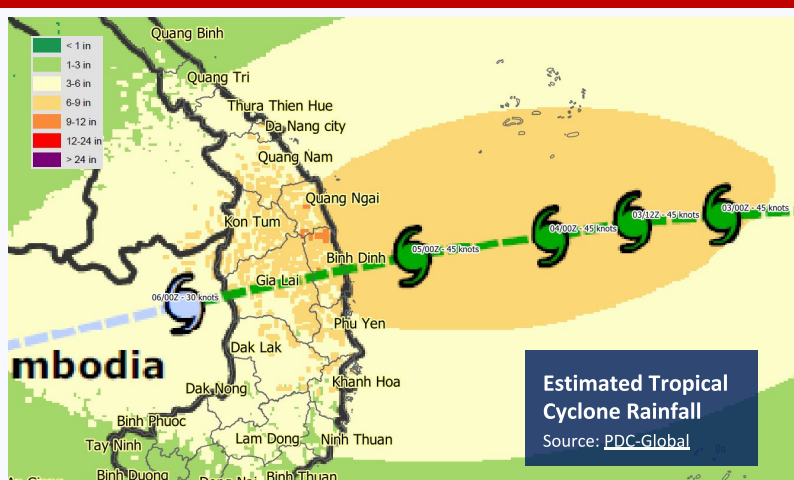
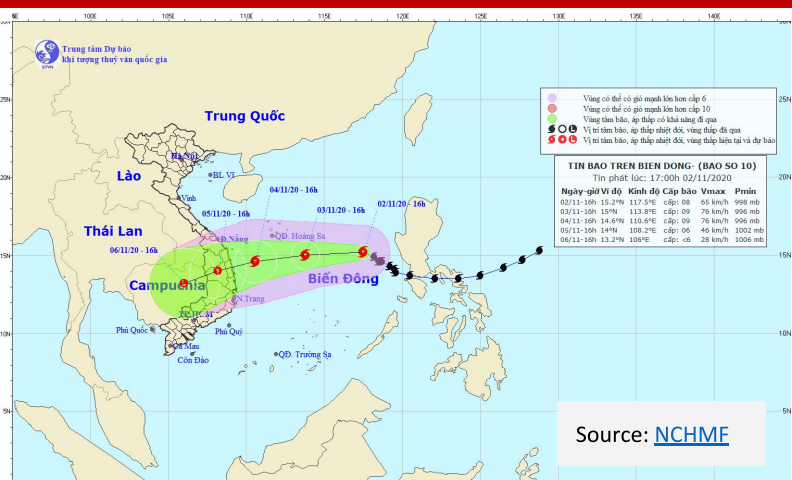
WATER

- **114 cities/municipalities** in **Bicol** reportedly experienced water interruptions

REGION	PROVINCE/CITY/MUNI	WATER INTERRUPTION
Albay	Province-wide	as of 01 November, 2020
Camarines Norte	Province-wide	as of 01 November, 2020
Camarines Sur	Province-wide	as of 01 November, 2020
Catanduanes	Province-wide	as of 01 November, 2020
Masbate	Province-wide	as of 01 November, 2020
Sorsogon	Province-wide	as of 01 November, 2020

III. VIET NAM - ANTICIPATED RISKS

Page 4 of 4



- Super Typhoon "GONI" exited the Philippine landmass as a Tropical Storm.
- At 1600 HRS 02 NOV 2020, Tropical Storm "GONI" (Storm No. 10) is located about **590 km from the Hoang Sa archipelago**. The **strongest wind near the centre is level 8** (60-75 km/h), wind gust is level 10 ([NCHMF](#)).
- For the next **24 to 48 hours**, Tropical Storm "GONI" will move mainly to the west, traveling at about 10-15 km/h. At 1600 HRS 04 NOV 2020, the storm's centre will be about **210 km from Quang Nam, 170 km from Quang Ngai and Binh Dinh**, and about **190 km from Phu Yen**. The **strongest wind near the centre is level 9** (75-90 km/h), wind gust level 11 ([NCHMF](#)).
- For the next **48 to 72 hours**, Tropical Storm "GONI" will move mainly to the southwest, traveling at about 10-15 km/h, inland from **Da Nang to Phu Yen**, and weakening into a tropical depression. At 1600 HRS 05 NOV 2020, the tropical depression's centre will be about 14.0° North latitude, 108.2° East longitude. The **strongest wind near the centre is level 6** (40-50 km/h), wind gust level 8 ([NCHMF](#)).
- For the next **72 to 96 hours**, Tropical Depression "GONI" will move mainly to the southwest, traveling at about 10 km/h and will continue to weaken ([NCHMF](#)).
- Level of natural disaster risk: **level 3** ([NCHMF](#))
- Viet Nam Disaster Management Authority ([VNDMA](#)) is already coordinating the preparedness of the country for Tropical Storm "GONI". Viet Nam is **still recovering** from the compounded impacts of **Typhoons "LINFA", "NANGKA", "SAUDEL", and "MOLAVE"**. Tropical Storm "GONI" will be the fifth consecutive tropical cyclone to hit Central Viet Nam within a month.
- According to [PDC Global](#) (1000 HRS, 02 NOV 2020), it is estimated that a **tropical cyclone rainfall** of about **152 - 229 mm** will precipitate in the provinces of **Bin Dinh, Gia Lai, Quang Ngai, Kon Tum, Quang Nam, and Phu Yen** when Tropical Storm "GONI" approaches the Viet Nam coast between **04 - 06 NOV 2020**.
- All shorelines in the path of the storm are exposed to **potential storm surge**, and inland areas within the proximity of the storm are exposed to **potential flooding and landslide** ([PDC Global](#)).