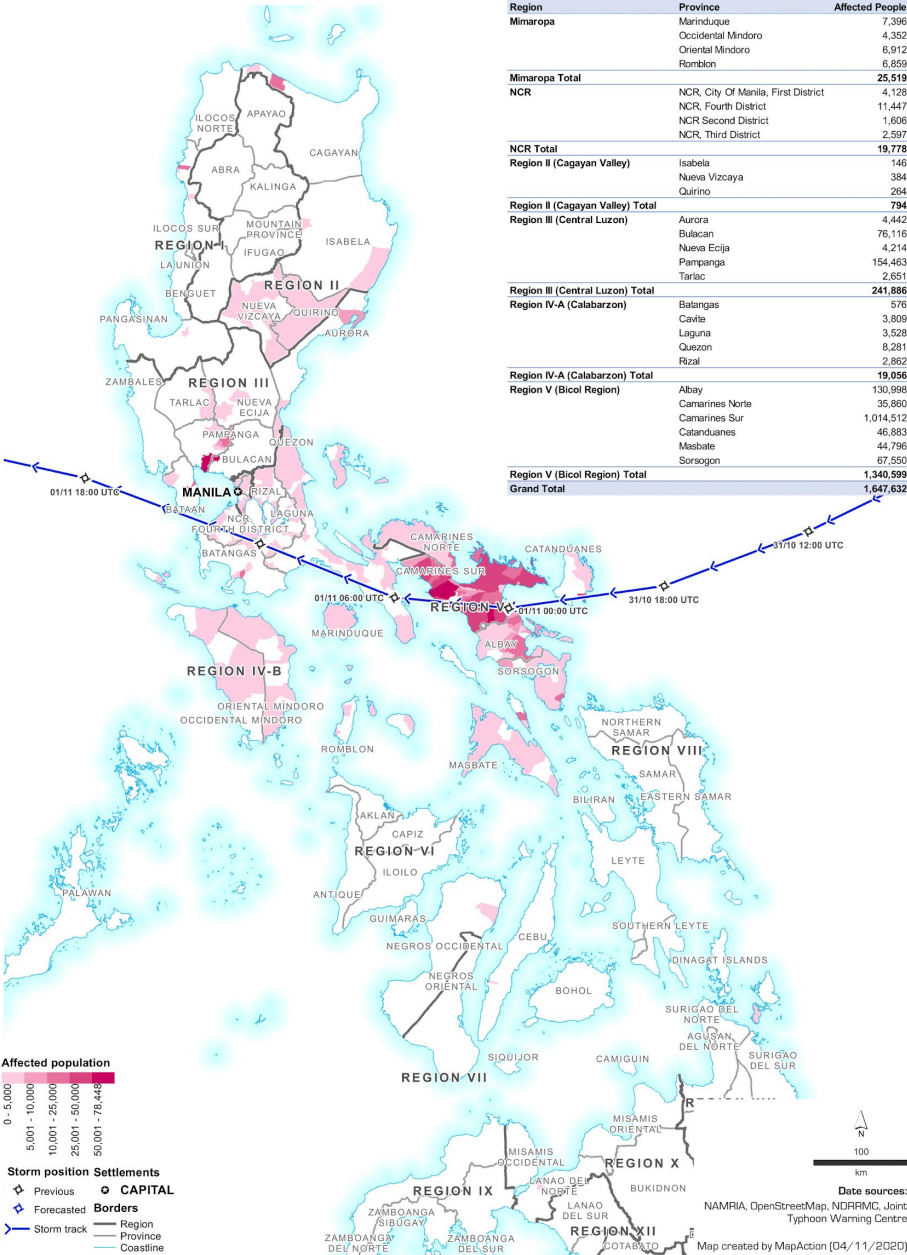


I. SUMMARY OF IMPACT



The Philippines: Typhoon Goni (Rolly)
Affected population by Municipality (as at 3 Nov 2020)

MA007 v1



Region	Province	Affected People
Mimaropa	Marinduque	7,396
	Occidental Mindoro	4,352
	Oriental Mindoro	6,912
Mimaropa Total		25,519
NCR	NCR, City Of Manila, First District	4,128
	NCR, Fourth District	11,447
	NCR Second District	1,606
NCR Total		19,778
Region II (Cagayan Valley)	Isabela	146
	Nueva Vizcaya	384
	Quirino	264
Region II (Cagayan Valley) Total		794
Region III (Central Luzon)	Aurora	4,442
	Bulacan	76,116
	Nueva Ecija	4,214
Region III (Central Luzon) Total		2,651
Region IV-A (Calabarzon)	Tarlac	241,886
	Batangas	576
	Cavite	3,809
Region IV-A (Calabarzon) Total		19,056
Region V (Bicol Region)	Albay	130,998
	Camarines Norte	35,860
	Camarines Sur	1,014,512
Region V (Bicol Region) Total		1,340,599
Grand Total		1,647,632

KEY FIGURES - PHILIPPINES



2.1M
AFFECTED PERSONS



517K
DISPLACED PERSONS



5.2K
EVACUATION CENTRES



20
DEAD



74
INJURED



3
MISSING



38.6K
DAMAGED HOUSES



\$53.6 Million
USD WORTH OF DAMAGES
TO AGRICULTURE



\$111.4 Million
USD WORTH OF DAMAGES
TO INFRASTRUCTURE

Note: Estimations are based on data reported/confirmed by the National Disaster Risk Reduction and Management Council ([NDRRMC](#)) of the Philippines and other verified sources

SITUATION OVERVIEW

At 0350 HRS of 01 NOV 2020, Super Typhoon "GONI" made its first landfall in the vicinity of Bato, Catanduanes (Bicol Region) with maximum sustained winds of 225 km/h (equivalent to Category 4 in the Saffir-Simpson Hurricane Wind Scale) and gustiness of up to 280 km/h ([PAGASA](#)). The tropical cyclone reportedly brought direct wind damage, storm surge hazard, flooding, landslide, lahar, mudflow, and rock slides across its path, which resulted to impact to the population and damage to properties and infrastructures. The National Disaster Risk Reduction and Management Council ([NDRRMC](#)) activated the National Response Cluster to facilitate emergency response coordination. Rapid Disaster Assessment and Needs Analysis (RDANA) Teams are scheduled to be deployed on 05 NOV 2020.

DATA SOURCES
ASEAN Disaster Monitoring & Response System (DMRS); Pacific Disaster Center (PDC Global), Map Action, Earth Observatory Singapore, UNOSAT - UNITAR Philippines, NDRRMC, PAGASA, Viet Nam: VNDMA, NCHMF, Verified news media agencies

DISCLAIMER
The AHA Centre was established in November 2011 by the Association of Southeast Asian Nations (ASEAN) Member States to facilitate cooperation and coordination among the Member States, relevant agencies of the United Nations, and international organisations in disaster management and humanitarian assistance. The use of boundaries, geographic names, related information and potential considerations for response are for reference, not warranted to be error free or implying official endorsement from ASEAN Member States.

© 2020 AHA Centre. All rights reserved. You are receiving this email because you are registered in our distribution list.

Our mailing address is: GRAHA BNPB 13th Floor, Jl. Raya Pramuka Kav. 38, Jakarta 13120 Indonesia

II. PHILIPPINES - RESPONSE & INITIAL NEEDS

GOVERNMENT RESPONSE

- **Emergency Warning and Alert Messages (EAWM)** disseminated to the public.
- **Pre-emptive evacuation** measures were conducted.
- Series of **Pre-Disaster Risk Assessments (PDRA)** and emergency meetings were organised across all levels of DRRMCs.
- **Physical and virtual activation of Emergency Operations Centres** were initiated.
- **Advisories, directives, and response issuances** were cascaded to sub-national DRRMCs.
- **Continuous response actions**, such as Search, Rescue, & Retrieval (SRR), provision of Relief Items, and restoration of Critical Lifelines.
- The National Response Cluster is scheduled to meet on 05 NOV 2020, and discuss whether there will be a call for international assistance among others. To date, the Philippines has **no calls for international assistance** yet.
- **Response capacities remain on sufficient levels**, and the NDRRMC plans to mobilise response resources in areas that were not affected to augment existing resources in the affected areas.
- The **NDRRMC Rapid Damage Assessment and Needs Analysis (RDANA)** teams are scheduled to be deployed to Albay and Catanduanes provinces in the Bicol region on 05 NOV 2020.



National Response Cluster Meeting. Photo from Office of Civil Defense



Replenishment of Relief Items. Photo from Office of Civil Defense

IMMEDIATE NEEDS (INITIAL)

- **Food & Non-Food Items**
 - Bicol (407K families)
 - CALABARZON (51K families)
 - MIMAROPA (7K families)
- **Temporary Shelter**
 - Bicol (25K houses damaged)
- **Power and Telecommunications Restoration**
 - Bicol (102 municipalities with power interruption)
 - Bicol (61 municipalities with network interruption)
 - CALABARZON (97 municipalities)



Emergency Responders. Photo from Office of Civil Defense

ASEAN EXECUTIVE BRIEFING

- The AHA Centre organised an online **Executive Briefing** for Super Typhoon GONI on **04 NOV 2020** to facilitate strategic coordination between **NDRRMC Philippines** and potentially assisting **ASEAN Member States, Humanitarian Partners, and Diplomatic Missions**.
- NDRRMC Philippines Executive Director, Undersecretary Ricardo B. Jalad, shared the **latest situation and immediate needs** in the Government-led response, as well as conveyed appreciation to the offers of support.
- The Executive Briefing was attended by ASEAN Secretary General Dato Lim Jock Hoi and over **60 representatives** from other ASEAN Member States, ASEAN Secretariat, AHA Centre, Diplomatic Missions to ASEAN, Foreign Embassies based in Jakarta, UN OCHA, WFP, UNOSAT, PDC, TSF, DHL, SDC, MSB, and the EU.

DATA SOURCES

ASEAN Disaster Monitoring & Response System (DMRS); Pacific Disaster Center (PDC Global), Map Action, Earth Observatory Singapore, UNOSAT - UNITAR
Philippines: NDRRMC, PAGASA
Viet Nam: VNDMA, NCHMF
Verified news media agencies

DISCLAIMER

The AHA Centre was established in November 2011 by the Association of Southeast Asian Nations (ASEAN) Member States to facilitate cooperation and coordination among the Member States, relevant agencies of the United Nations, and international organisations in disaster management and humanitarian assistance.
The use of boundaries, geographic names, related information and potential considerations for response are for reference, not warranted to be error free or implying official endorsement from ASEAN Member States.

© 2020 AHA Centre.
All rights reserved.
You are receiving this email because you are registered in our distribution list.

Our mailing address is:
AHA Centre,
GRAHA BNPB 13th Floor,
Jl. Raya Pramuka Kav. 38,
Jakarta 13120 Indonesia

II. PHILIPPINES - STATUS OF CRITICAL LIFELINES

TRANSPORTATION

AIRPORTS (as of 04 Nov 2020)

- National hubs
 - NAIA, **Metro Manila** (main hub) is **operational**
 - Clark Airport, **Pampanga** (alternate hub) is **operational**
- Bicol
 - Virac Airport, **Catanduanes** is **operational**
 - Legazpi Airport, **Albay** is **operational**
 - Naga Airport, **Camarines Sur** is **operational**
- CALABARZON
 - Sangley Airport, **Cavite** is **operational**

SEAPORTS (as of 02 Nov 2020)

- Bicol - **operational**
 - Albay** (Legazpi)
 - Sorsogon** (Bulan, Matnog)
 - Masbate** (all)
- CALABARZON - **operational**
 - Batangas** (all)
 - Quezon** (all)
- MIMAROPA - **operational**
 - Mindoro** (Calapan)
 - Marinduque** (all)

ROADS & BRIDGES (as of 04 Nov 2020)

- 60** road sections affected
 - 40** sections are **already passable**
 - 20** sections are **still not passable**
 - Bicol, CALABARZON, Cagayan Valley, CAR, Central Luzon
- 7** bridges
 - 6** bridges are **still not passable**
 - Cagayan Valley

TELECOMMUNICATIONS

- 68 cities/municipalities** reportedly experienced telecommunications network interruptions
- Bicol**
 - Whole province of **Albay**
 - Whole province of **Catanduanes** (first landfall) - the NDRRMC Emergency Telecommunications Team already **re-established** communication links
 - Whole province of **Masbate**
 - Eleven provinces of **Camarines Sur**
- CALABARZON**
 - Guinayangan, Quezon** (interrupted network)
- MIMAROPA**
 - Whole province of **Marinduque** (slow/no internet and phone connection; intermittent to no telecom signal)



The Provincial Governor of Catanduanes reporting situation updates and initial needs to the NDRRMC Operations Centre via emergency telecommunications. Photo from Office of Civil Defense

POWER

- 151 cities/municipalities** are reportedly still experiencing power interruptions/outages
- Bicol**
 - Whole provinces of **Albay, Camarines Norte, Camarines Sur, Catanduanes**, and portions of **Masbate**
- CALABARZON**
 - Portions of **Laguna** and **Quezon**
- MIMAROPA**
 - Portions of **Marinduque**
- Eastern Visayas**
 - Portions of **Northern Samar** and **Samar**

WATER

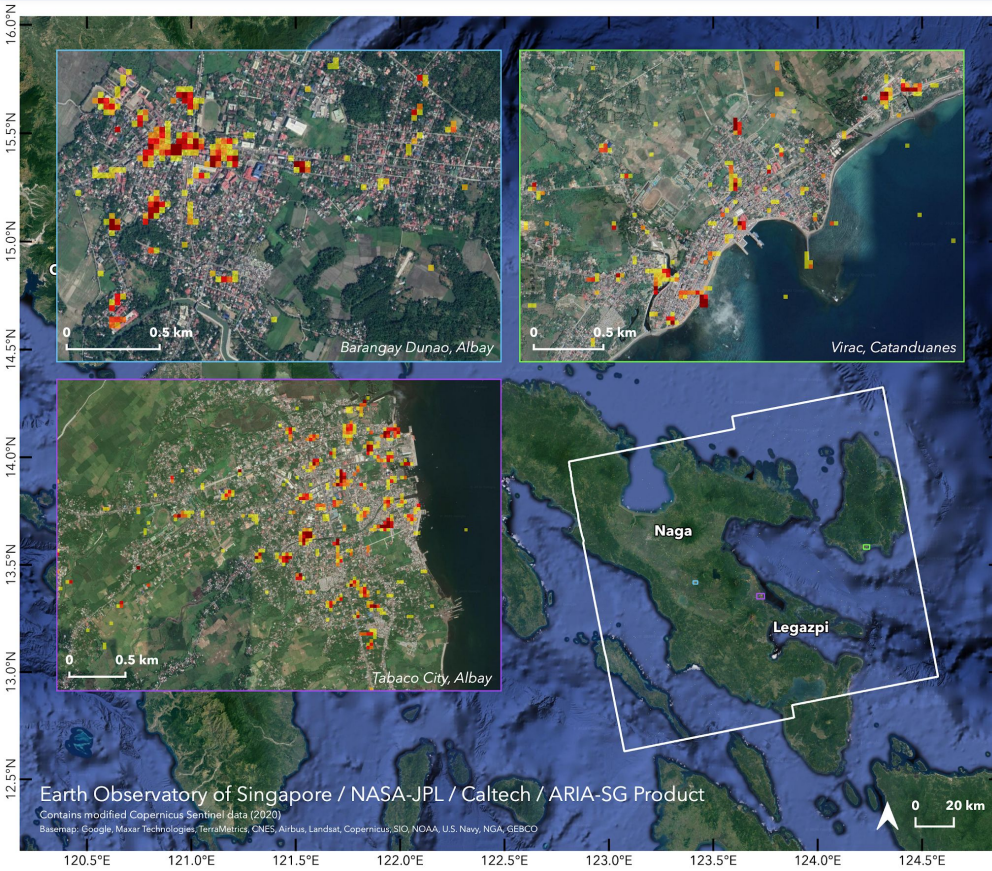
- 84 cities/municipalities** in **Bicol** and **MIMAROPA** are reportedly still experiencing water interruptions

REGION	PROVINCE/CITY/MUNI	WATER INTERRUPTION	WATER RESTORED
REGION V			
Albay	Province-wide	as of 01 November 2020	
Camarines Norte	Province-wide	as of 01 November 2020	
Camarines Sur	Province-wide	as of 01 November 2020 (Cabusao, Presentacion, Garchitorena, Caramoan, San Jose, and Balatan)	31 other municipalities
Catanduanes	Province-wide	as of 01 November 2020	
Masbate	Province-wide	as of 01 November 2020	
Sorsogon	Province-wide	as of 01 November 2020	
MIMAROPA			
Marinduque	Mogpog		Water supply is cut because of power interruption and flooding; Brgy Bobcog Waterworks (polyethylene pipes) washed out by flood

Source: OCDROs

III. SUPPLEMENTARY INFORMATION PRODUCTS

SENTINEL ASIA through EARTH OBSERVATORY SINGAPORE ARIA-SG



ARIA-SG DAMAGE PROXY MAP: Philippines Typhoon GONI (local name "Rolly") 1 Nov 2020

This map shows areas which are likely damaged in the Bicol region. **Damaged regions is by coloured pixels of 30 m in size, where yellow to red indicates increasingly significant ground surface change before and after the event.**

The study area is delineated by the white polygon.

Disclaimer:

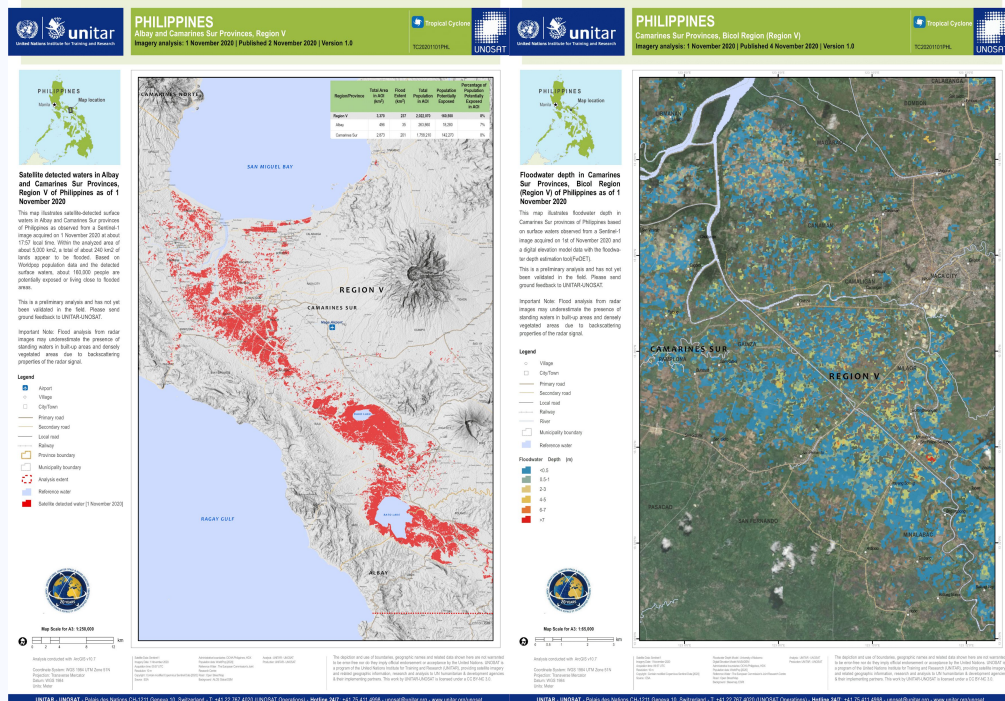
This map can be used as guidance to identify damaged areas, and may be less reliable over vegetated areas. Scattered pixels over vegetated areas may be false positives, and a lack of coloured pixels over vegetated areas may not mean no damage.

Data source:

Synthetic Aperture Radar data (Sentinel-1) of European Space Agency (ESA) before (26 Oct) and after (1 Nov) the event. In collaboration with NASA-JPL and Caltech. Data processing used and AWS Open Dataset of Copernicus Sentinel-1 data for the Asia region.

More map details and files available at:
[EOS ARIA-SG 202011-Philippines Typhoon GONI](#)

UNOSAT - UNITAR



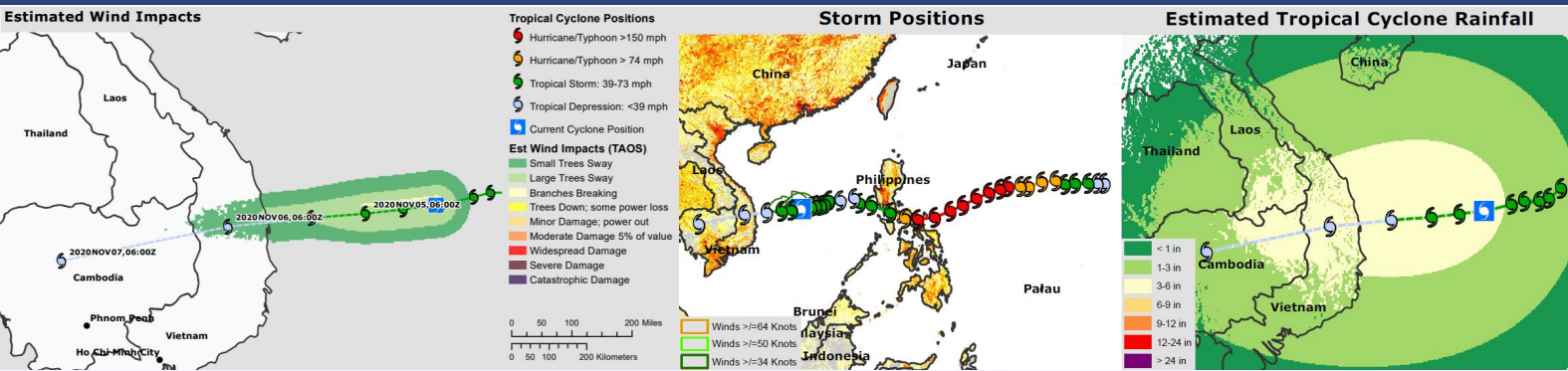
These maps illustrate (a) **satellite-detected surface waters in Albay and Camarines Sur provinces** and (b) **flood water depth in Camarines Sur province, Philippines** as observed from a Sentinel-1 image acquired on 1 November 2020 at about 17:57 local time and a digital elevation model data with the flood water depth model (FwDET). Within the analyzed area of about 5,000 km², a total of about 240 km² of lands appear to be flooded. Based on Worldpop population data and the detected surface waters, about 160,000 people are potentially exposed or living close to flooded areas.

These maps can be used as guidance for directing search and rescue efforts and conducting targeted relief assistance for efficient distribution. This is a preliminary analysis and needs field validation. Please send ground feedback to UNOSAT UNITAR.

Important Note: Flood analysis from radar images may underestimate the presence of standing waters in built-up areas and densely vegetated areas due to backscattering properties of the radar signal. Download map details and other files here:
(a) [flood extent Albay-CamarinesSur](#)
(b) [flood water depth CamarinesSur](#)

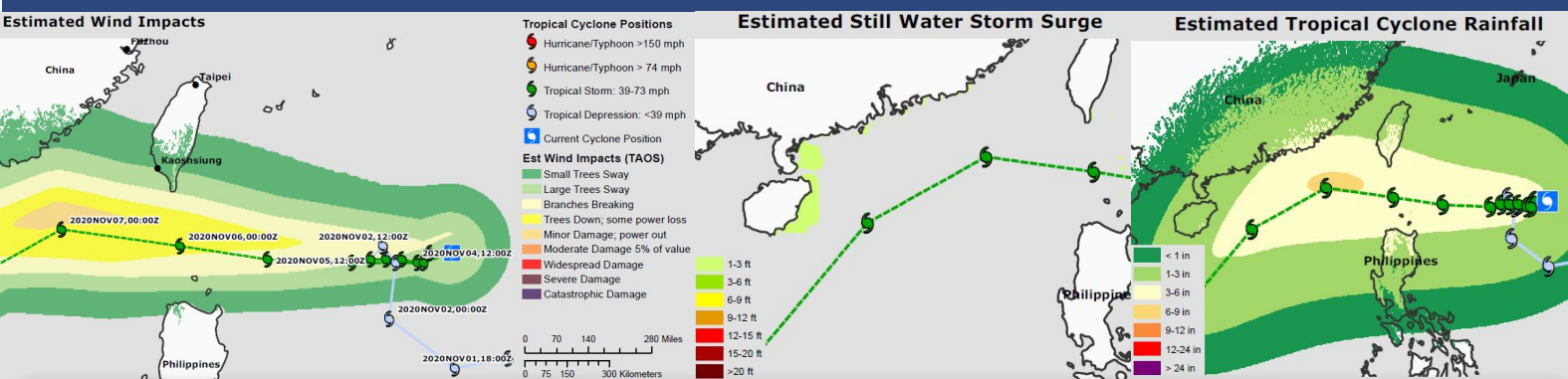
IV. ANTICIPATED RISKS

Tropical Storm GONI - Estimated Impacts, as of 1600 HRS 04 NOV 2020, Source: PDC-Global



- Super Typhoon GONI exited the Philippine landmass as a Tropical Storm and currently located approximately in the NW Pacific Ocean with maximum sustained winds of 65 km/h, and wind gusts up to 83 km/h ([PDC-Global](#)).
- At 1300 HRS 04 NOV 2020, Tropical Storm GONI (locally named Storm No. 10 in Viet Nam) is located about 310 km from Hoang Sa archipelago in the Southeast. The strongest wind near the centre is level 8 (60-75 km/h), wind gust is level 10 ([NCHMF](#)).
- For the next 12 to 24 hours, Tropical Storm GONI will move mainly to the southwest, traveling at about 10 km/h. At 1300 HRS 05 NOV 2020, the storm's centre will be about 150 km from Quang Ngai to Khanh Hoa to the East. The strongest wind near the centre is level 8 (60-75 km/h), wind gust level 10 ([NCHMF](#)).
- For the next 24 to 48 hours, Tropical Storm GONI will move mainly to the southwest, traveling at about 10-15 km/h, and weakening into a tropical depression and entering the provinces from Quang Ngai to Khanh Hoa and continue to weaken into a low pressure area ([NCHMF](#)).
- At 1300 HRS 06 NOV 2020, the centre of the low pressure area is forecasted to be in the Central Highlands region. The strongest wind in the center of the low-pressure area falls below level 6 (<40 km/h).
- Level of natural disaster risk: level 3 ([NCHMF](#)).
- Viet Nam Disaster Management Authority ([VNDMA](#)) is already coordinating the preparedness of the country for Tropical Storm GONI. Viet Nam is still recovering from the compounded impacts of Typhoons LINFA, NANGKA, SAUDEL, and MOLAVE. Tropical Storm GONI will be the fifth consecutive tropical cyclone to hit Central Viet Nam within a month.

Tropical Storm ATSANI - Estimated Impacts, as of 1000 HRS 04 NOV 2020, Source: PDC-Global



- Tropical Storm ATSANI (locally named SIONY in the Philippines) is located in the NW Pacific Ocean with maximum sustained winds of 83 km/h, and wind gusts up to 102 km/h. The cyclone is headed Northwest at about 6 km/h, and is expected to strengthen over the next 24 hours. It is cautioned, however, that the storm's actual position may shift significantly over the next few days. ATSANI is not expected to cross-over a major land-mass within the next 48-72 hours (although it may impact smaller islands along the way) ([PDC-Global](#)).
- According to [PAGASA](#), In the next 24 hours, the northeasterlies enhanced by Tropical Storm GONI and Severe Tropical Storm ATSANI will bring strong breeze to gale-force winds with higher gusts over Batanes, Babuyan Islands, and the northern coastal areas of Cagayan and Ilocos Norte. Tropical Cyclone Wind Signal (TCWS) #1 is now in effect for several areas in Extreme Northern Luzon. Based on all available meteorological data, the highest wind signal that is possible to be raised will be TCWS #3.