



ONE ASEA
ONE RESPONSE

WEEKLY DISASTER UPDATE

Week 1
04 -10 Jan 2021



The AHA Centre, GRAHA BNPB 13th floor,
Jl. Raya Pramuka Kav. 38, East Jakarta 13120 Indonesia

SOURCES

ASEAN Disaster Monitoring & Response System (DMRS);
ASEAN Specialised Meteorological Centre (ASMC); Joint
Typhoon Warning Centre (JTWC)

Indonesia: BNPB, BMKG, PVMBG;
Malaysia: NADMA;
Philippines: NDRRMC, DSWD, PNA;
Thailand: DDPM

Various news agencies

DISCLAIMER

The AHA Centre was established in November 2011 by the
Association of Southeast Asian Nations (ASEAN) Member
States to facilitate cooperation and coordination among
Member States, relevant agencies of the United Nations
and international organisations in disaster management and
emergency response.

This update consists of significant natural disaster events
that occurred in ASEAN Member States – Brunei
Darussalam, Cambodia, Indonesia, Lao PDR, Malaysia,
Myanmar, Philippines, Singapore, Thailand, and Viet Nam.
The disasters recorded include Drought, Flood, Earthquake,
Tsunami, Volcano, Wind, Landslide, and Storm.

The use of boundaries, geographic names, related
information, and potential considerations for response are
for references, not warranted to be error-free or implying
official endorsement from ASEAN Member States.

© 2021 AHA Centre.
All rights reserved.

For inquiries, comments, and/or suggestions,
you may reach us through dma@ahacentre.org



You are receiving this email because you are
registered in our distribution list.

SCAN TO SUBSCRIBE



REGIONAL TALLY



Note: Estimations are based on data reported/confirmed by National
Disaster Management Organisations of each respective ASEAN
Member State and other verified sources

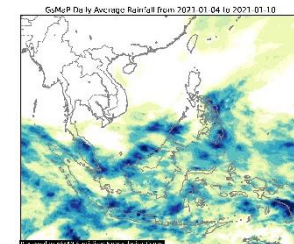
REGIONAL SUMMARY:

A total of 27 disasters (20 floods, 4 landslides, 1 storm, 1 volcanic eruption, 1 wind) affected the region in the first week of 2021. Indonesia, Malaysia, the Philippines, and Thailand have been reportedly affected. High intensity rain, the overflowing of rivers, and unstable soil conditions caused the disasters in Indonesia as reported by the Badan Nasional Penanggulangan Bencana (BNPB). The northeast monsoon reportedly resulted in flooding in Peninsular Malaysia and flooding, landslides, and windstorms in Southern Thailand as reported by Malaysia's Agensi Pengurusan Bencana Negara (NADMA) and Thailand's Department of Disaster Prevention and Mitigation (DDPM). Lastly, the tail-end of a frontal system caused the flooding in the Philippines according to a report by the Department of Social Welfare and Development (DSWD).

HIGHLIGHT:

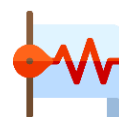
According to Indonesia's BNPB, high intensity rain and the overflowing of the Citarum river in Bandung on 10 Jan caused flooding that affected 20.4K families (66.4K persons) and submerged 10.6K houses and 46 places of worship in flood waters. Rapid assessments and coordination among relevant authorities within the affected areas has been done. It is also worth mentioning that a landslide in Sumedang resulted in majority of the week's casualties (13). Meanwhile according to Thailand's DDPM, since 04 Jan the northeast monsoon has caused flooding, landslides, and windstorms that affected Songkhla, Yala, Narathiwat, and Pattani and has affected 37.3K families (186.6K persons). The DDPM has responded to the affected areas and is continuously monitoring the situation.

HYDRO-METEO-CLIMATOLOGICAL:



For the past week, data from the ASEAN Specialised Meteorological Centre (ASMC) showed high 7-day average rainfall over the Eastern portions of the Philippines, Peninsular Malaysia, and Java and Papua, Indonesia. As of reporting, no tropical cyclone advisory has been issued by the JTWC.

GEOPHYSICAL:



Four (4) significant earthquakes ($M \geq 5.0$) were recorded in the region by Indonesia's Badan Meteorologi Klimatologi dan Geofisika (BMKG). Mt. Merapi and Sinabung both of which reported recent volcanic activity, Ili Lewotolok, and Karangetang in Indonesia, all on Alert Level III, are under close monitoring. Lastly, Ibu and Dukono in Indonesia remain on Alert Level II despite recent volcanic activity per PVMBG.

OUTLOOK:



For the coming week, the ASMC forecasts wetter conditions for the maritime continent (expected to ease by next week); drier conditions around the Gulf of Thailand (expected to develop next week); and cooler conditions over much of mainland Southeast Asia and the western maritime continent; There is a moderate increase in chance for a heavy rainfall event to occur in the central and southern portions of the Philippines as well as parts of the equatorial region.

01 Indonesia, Flooding and Landslide in Sangihe (Sulawesi Utara)

04 Jan 2020 | More details at: [ADinet Report 2070](#)

02 Malaysia, Flooding in Kelantan, Perak, and Selangor States

04 Jan 2020 | More details at: [ADinet Report 2064 2065 2066](#)

03 Philippines, Flooding and Landslide in Bicol Region

05 Jan 2020 | More details at: [ADinet Report 2075](#)

04 Indonesia, Flooding in Banjar (South Kalimantan) and Penajam Paser Utara (East Kalimantan)

05, 07 Jan 2020 | More details at: [ADinet Report 2068 2077](#)

05 Indonesia, Flooding in Gresik, Pasuruan, Tuban, and Bojonegoro (East Java)

5, 5, 8, 8 Jan 2020 | More details at: [ADinet Report 2067 2071 2079 2080](#)

06 Indonesia, Flooding in Anambas (Riau Islands)

05 Jan 2020 | More details at: [ADinet Report 2069](#)

07 Indonesia, Flooding in Bima and Sumbawa (West Nusa Tenggara)

05, 06 Jan 2020 | More details at: [ADinet Report 2072 2074](#)

08 Indonesia, Volcanic Eruption, Mount Merapi (Central Java)

06 Jan 2020 | More details at: [ADinet Report 2076](#)

09 Thailand, Flooding, Landslide, Storms, and Winds in Songkhla, Yala, Narathiwat, and Pattani (Southern Thailand)

08 Jan 2020 | More details at: [ADinet Report 2086](#)

10 Other events | More details at: [ADinet Report 2084 2082 2081 2085 2083 2087](#)