



ONE ASEM
ONE RESPONSE

WEEKLY DISASTER UPDATE

Week 2
11-17 Jan 2021



The AHA Centre, GRAHA BNPB 13th floor,
Jl. Raya Pramuka Kav. 38, East Jakarta 13120 Indonesia

SOURCES

ASEAN Disaster Monitoring & Response System (DMRS);
ASEAN Specialised Meteorological Centre (ASMC); Joint
Typhoon Warning Centre (JTWC)

Indonesia: BNPB, BMKG, PVMBG;
Malaysia: NADMA;
Philippines: NDRRMC, DSWD;

Various news agencies

DISCLAIMER

The AHA Centre was established in November 2011 by the
Association of Southeast Asian Nations (ASEAN) Member
States to facilitate cooperation and coordination among
Member States, relevant agencies of the United Nations
and international organisations in disaster management and
emergency response.

This update consists of significant natural disaster events
that occurred in ASEAN Member States – Brunei
Darussalam, Cambodia, Indonesia, Lao PDR, Malaysia,
Myanmar, Philippines, Singapore, Thailand, and Viet Nam.
The disasters recorded include Drought, Flood, Earthquake,
Tsunami, Volcano, Wind, Landslide, and Storm.

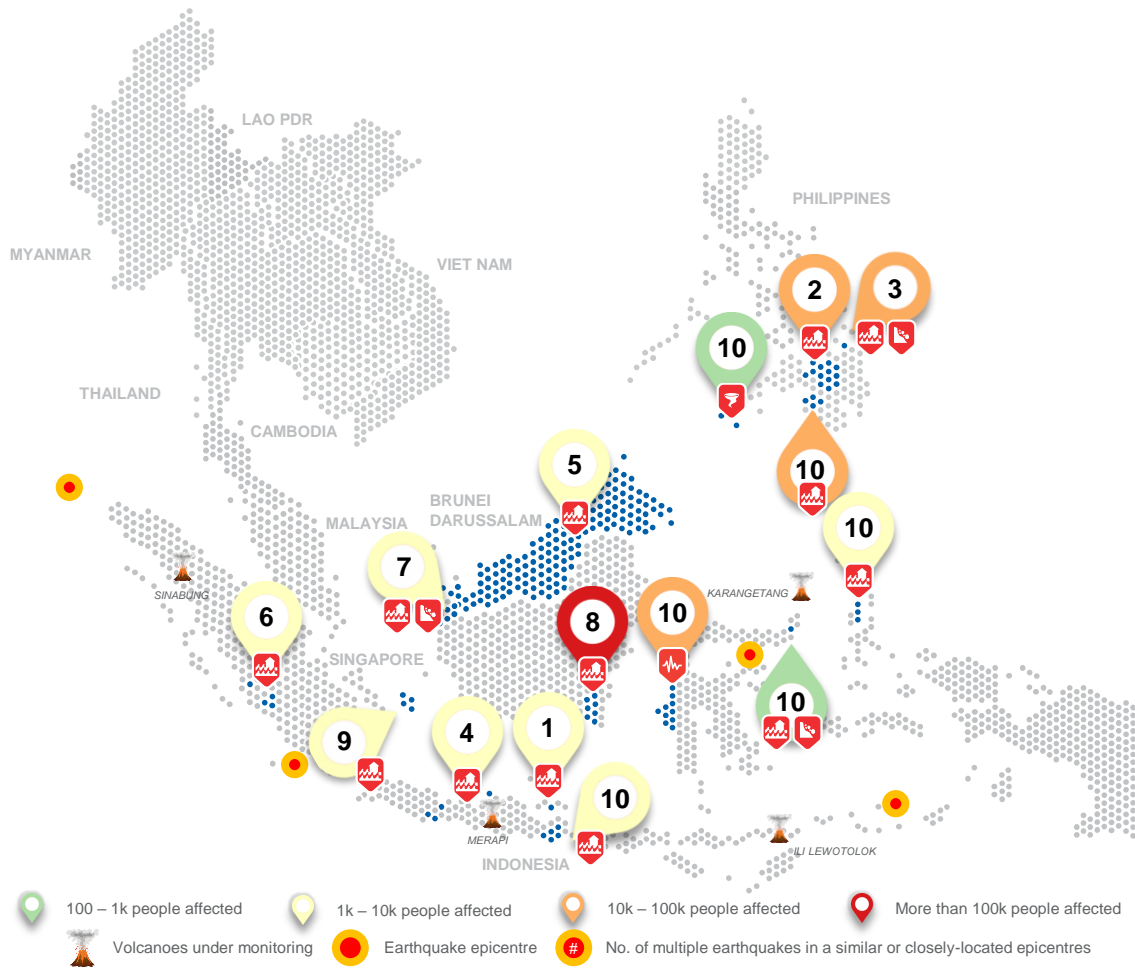
The use of boundaries, geographic names, related
information, and potential considerations for response are
for references, not warranted to be error-free or implying
official endorsement from ASEAN Member States.

© 2021 AHA Centre.
All rights reserved.

For inquiries, comments, and/or suggestions,
you may reach us through dms@ahacentre.org



SCAN TO SUBSCRIBE



REGIONAL TALLY



Note: Estimations are based on data reported/confirmed by National
Disaster Management Organisations of each respective ASEAN
Member State and other verified sources

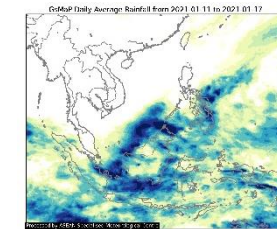
REGIONAL SUMMARY:

A total of 33 disasters (26 floods, 4 landslides, 1 earthquake, 1 volcanic eruption, 1 wind) affected the region in the second week of 2021. Indonesia, Malaysia, and the Philippines have been reportedly affected. Multiple hazards have imposed risks to Indonesia as reported by the Badan Nasional Penanggulangan Bencana (BNPB)—flooding, earthquake, landslide, volcano, and the Covid-19 pandemic. Flooding was reported in Eastern Malaysia by the Agensi Pengurusan Bencana Negara (NADMA). Lastly, the Inter-Tropical Convergence Zone near Mindanao brought rains and winds that caused flooding and landslide as reported by the Department of Social Welfare and Development (DSWD).

HIGHLIGHT:

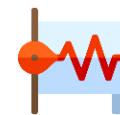
A M6.2 earthquake that occurred in West Sulawesi on 15 Jan has displaced 27.9K people across Mamuju and Majene into 30 evacuation centres. The earthquake has reportedly resulted in 81 deaths and 826 people injured. 1.2K households, 5 health facilities, 27 schools, and 1 public building have been damaged. 872 powerhouses have also been affected most of which are now operational again. Road access between Mamuju and Majene has already been made accessible again. Continuous assessment, coordination, and monitoring is being carried out by the BNPB. The provincial government has declared emergency status for two weeks. Meanwhile, high intensity rainfall since 09 Jan has resulted in widespread flooding in South Kalimantan affecting 210.1K persons, claiming the lives of 15 people, displacing 39.5K persons, and damaging 24.3K houses. Local BPBD and related agencies are coordinating to assist the victims and provide their needs.

HYDRO-METEO-CLIMATOLOGICAL:



For the past week, data from the ASEAN Specialised Meteorological Centre (ASMC) showed high 7-day average rainfall over Southern Philippines, Eastern Malaysia (Sabah and Sarawak states), the regions surrounding Borneo Island, and southeastern Sumatra of Indonesia. As of reporting, no tropical cyclone advisory has been issued by the JTWC.

GEOPHYSICAL:



Ten (10) significant earthquakes ($M \geq 5.0$) were recorded in the region by Indonesia's Badan Meteorologi Klimatologi dan Geofisika (BMKG). Mt. Merapi and Semeru, both of which reported recent volcanic activity, Sinabung, Ili Lewotolok, and Karangetang in Indonesia, all on Alert Level III, are under close monitoring. Lastly, Dukono in Indonesia remain on Alert Level II despite recent volcanic activity per PVMBG.

OUTLOOK:



For the coming week, the ASMC forecasts wetter conditions for the maritime continent and cooler conditions over mainland Southeast Asia to ease; drier conditions in parts of the western maritime continent. There is a small increase in chance for a heavy rainfall event to occur in northern and central Philippines, coastal Viet Nam, eastern Java and Nusa Tenggara; moderate increase in chance of extended dry conditions over Sumatra of Indonesia, southern Malay peninsula, and western Borneo; and a small chance of extreme hot conditions in parts of the equatorial region.