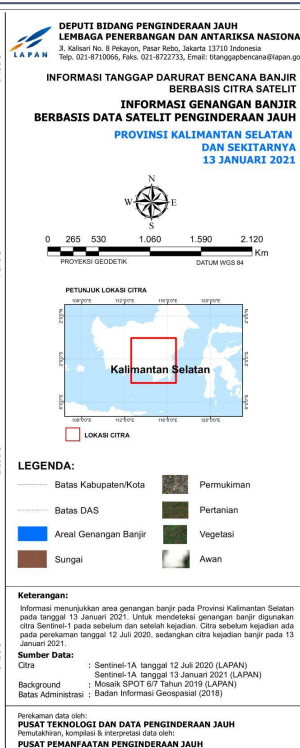
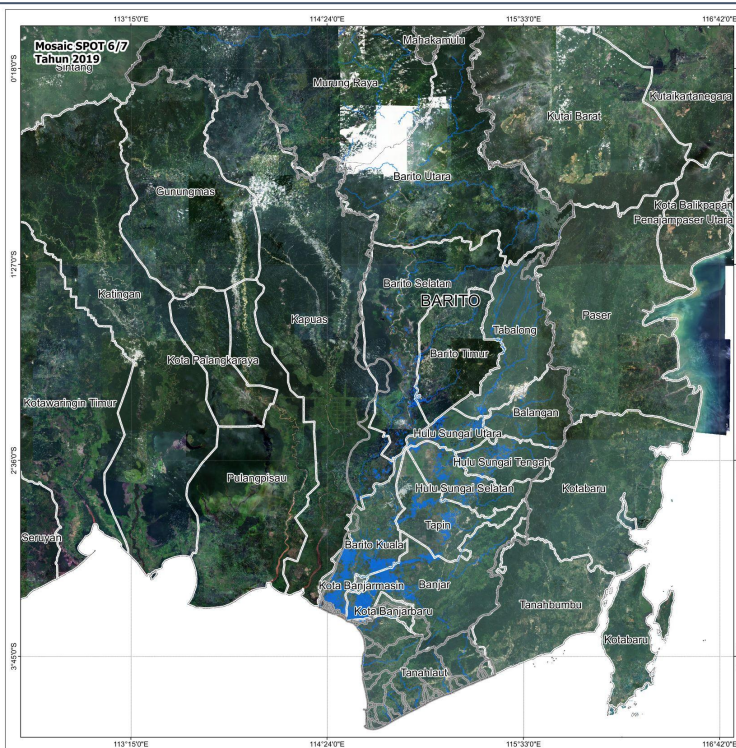


MONDAY
18 JAN 2021
1100 HRS UTC +7

FLOODING IN SOUTH KALIMANTAN INDONESIA FLASH UPDATE #1



ONE ASEAN ONE RESPONSE



KEY FIGURES

Disclosure(s): Estimations are based on data reported/confirmed by National Disaster Management Organisations of the respective ASEAN Member State (Badan Nasional Penanggulangan Bencana (BNPB) and other verified sources



210.1K
AFFECTED PERSONS



15
DEAD



39.5K
DISPLACED



24.3K
DAMAGED HOUSES

Indonesia

- According to the report from Indonesia's Badan Nasional Penanggulangan Bencana (BNPB), the flooding triggered by high intensity rain since 9 January 2021 has affected **Batola, Banjar, Banjar Baru, Tanah Laut, Hulu Sungai Tengah, Balangan, Tabalong, Hulu Sungai Selatan, Tapin, and Banjarmasin**
- Indonesia's Badan Nasional Penanggulangan Bencana (BNPB) reported that as many as **210,140 people** were affected by the flood (as of 17 January (1400 HRS UTC+7), with around 39.5K people displaced.
- Seven (7) cities / regencies were affected by the flood:
 - Batola - 28,400 people affected and 517 houses damaged;
 - Banjar - 53,685 people affected, 11,269 displaced, 3 dead, and 6,670 houses damaged;
 - Banjar Baru - 8,671 people affected, 3,690 displaced, 1 dead, and 2,156 houses damaged
 - Tanah Laut - 27,815 people affected, 13,062 displaced, 7 dead, and 8,506 houses damaged
 - Hulu Sungai Tengah - 64,400 people affected, 11,200 displaced, 3 people dead, and 4,000 houses damaged
 - Balangan - 17,501 people affected and 1,154 houses damaged
 - Tabalong - 770 people affected and 407 houses damaged
 - Hulu Sungai Selatan - 6,690 people affected and 387 houses damaged
 - Tapin - 1,492 people affected, 328 displaced, 1 dead and 582 houses damaged
 - Banjarmasin - 716 people affected
- According to Indonesia National Institute of Aeronautics and Space (LAPAN) most of the flood area are not only concentrated in the downstream of the Barito watershed but also spreading across affected regencies.
- Local BPBD, BASARNAS and other related agencies are coordinating to evacuate the affected people and provide victims' needs.
- The AHA Centre will continue to monitor for further developments and issue necessary updates.

DATA SOURCES

ASEAN Disaster Monitoring & Response System (DMRS); Pacific Disaster Center (PDC Global);

Indonesia: BNPB, BMKG, LAPAN

Verified news media agencies

DISCLAIMER

The AHA Centre was established in November 2011 by the Association of Southeast Asian Nations (ASEAN) Member States to facilitate cooperation and coordination among the Member States, relevant agencies of the United Nations, and international organisations in disaster management and humanitarian assistance.

The use of boundaries, geographic names, related information and potential considerations for response are for reference, not warranted to be error free or implying official endorsement from ASEAN Member States.

© 2021 AHA Centre.
All rights reserved.
You are receiving this email because you are registered in our distribution list.

Our mailing address is:
AHA Centre,
GRAHA BNPB 13th Floor,
Jl. Raya Pramuka Kav. 38,
Jakarta 13120 Indonesia