



ONE ASEAN
ONE RESPONSE

WEEKLY DISASTER UPDATE

Week 11
15 – 21 Mar 2021

- ahacentre.org
- ahacentre
- @ahacentre
- @ahacentre

The AHA Centre, GRAHA BNPB 13th floor,
Jl. Raya Pramuka Kav. 38, East Jakarta 13120 Indonesia

SOURCES

ASEAN Disaster Monitoring & Response System (DMRS);
ASEAN Specialised Meteorological Centre (ASMC); Joint
Typhoon Warning Centre (JTWC)

Indonesia: BNPB, BMKG, PVMBG;
Thailand: DDPM

Various news agencies

DISCLAIMER

The AHA Centre was established in November 2011 by the
Association of Southeast Asian Nations (ASEAN) Member
States to facilitate cooperation and coordination among
Member States, relevant agencies of the United Nations
and international organisations in disaster management and
emergency response.

This update consists of significant natural disaster events
that occurred in ASEAN Member States – Brunei
Darussalam, Cambodia, Indonesia, Lao PDR, Malaysia,
Myanmar, Philippines, Singapore, Thailand, and Viet Nam.
The disasters recorded include Drought, Flood, Earthquake,
Tsunami, Volcano, Wind, Landslide, and Storm.

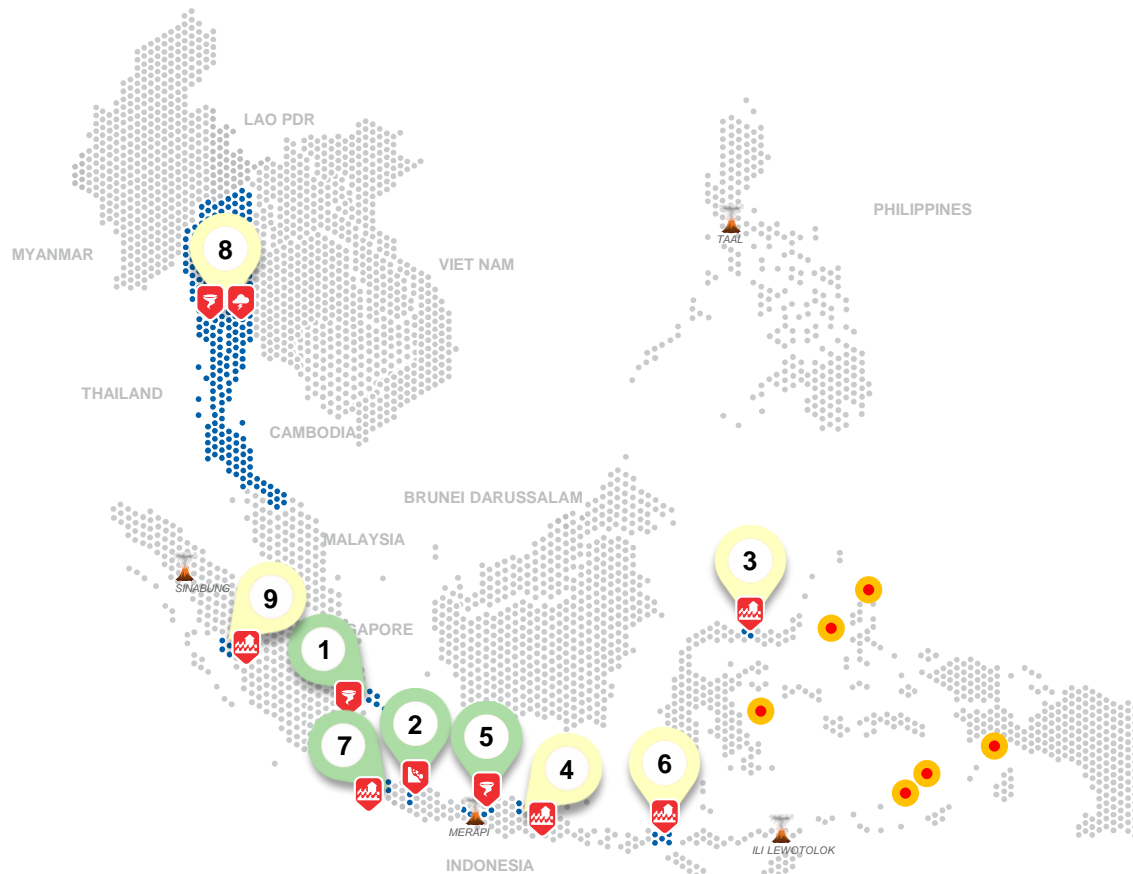
The use of boundaries, geographic names, related
information, and potential considerations for response are
for reference, not warranted to be error-free or implying
official endorsement from ASEAN Member States.

© 2021 AHA Centre.
All rights reserved.

For inquiries, comments, and/or suggestions,
you may reach us through dma@ahacentre.org



SCAN TO SUBSCRIBE



- 100 – 1k people affected
- 1k – 10k people affected
- 10k – 100k people affected
- More than 100k people affected
- Volcanoes under monitoring
- Earthquake epicentre
- No. of multiple earthquakes in a similar or closely-located epicentres

REGIONAL TALLY



Note: Estimations are based on data reported/confirmed by National
Disaster Management Organisations of each respective ASEAN
Member State and other verified sources

- 01 Indonesia, Strong Winds in South Bangka Regency (Bangka Belitung Islands)**
15 Mar 2021 | More details at: [ADInet Report 2351](#)
- 02 Indonesia, Landslide in Purwakarta Regency (West Java)**
16 Mar 2021 | More details at: [ADInet Report 2356](#)
- 03 Indonesia, Flooding in North Gorontalo Regency (Gorontalo)**
16 Mar 2021 | More details at: [ADInet Report 2349](#)
- 04 Indonesia, Flooding in Gresik (East Java)**
17 Mar 2021 | More details at: [ADInet Report 2352](#)
- 05 Indonesia, Strong Wind in Magelang Regency and Whirlwind in Grobogan Regency (Central Java)**
17, 21 Mar 2021 | More details at: [ADInet Report 2355 2360](#)
- 06 Indonesia, Flooding in Bima Regency (West Nusa Tenggara)**
17 Mar 2021 | More details at: [ADInet Report 2353](#)
- 07 Indonesia, Flooding in Serang City (Banten)**
20 Mar 2021 | More details at: [ADInet Report 2358](#)
- 08 Thailand, Thunderstorms and winds in 9 Provinces**
20 Mar 2021 | More details at: [ADInet Report 2359](#)
- 09 Indonesia, Flooding in Padang Pariaman Regency (West Sumatra)**
21 Mar 2021 | More details at: [ADInet Report 2361](#)

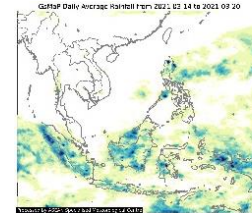
REGIONAL SUMMARY:

A total of 11 disasters (5 floods, 1 landslide, 4 winds-related, and 1 storm) affected the region in week 11. These disasters occurred in Indonesia and Thailand. High intensity rain caused floods, landslides, and strong winds in eight provinces in Indonesia as reported by Badan Nasional Penanggulangan Bencana ([BNPB](#)). According to Department of Disaster Prevention and Mitigation ([DDPM](#)), the high pressure area that extends from China covering upper Thailand resulted in thunderstorms and winds in 9 Province in Thailand.

HIGHLIGHT:

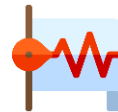
According to Badan Nasional Penanggulangan Bencana ([BNPB](#)), heavy rainfall and the overflowing of the Pontolo, Milango, Bubode and Leya'o rivers on 16 March, caused flashfloods in North Gorontalo Regency which affected almost 2K persons, damaging around 415 houses, 1 public facility, embankments, and 45 ha of agriculture area. Meanwhile, heavy rainfall events and the overflowing of Sorilante river caused floods in Bima Regency, West Nusa Tenggara on 17 March affecting 1.3K people and damaging 341 houses. Lastly, thunderstorms and winds occurred in Phayao, Nong Bua Lam Phu, Chaiyaphum, Sakon Nakhon, Kalasin, Mahasarakham, Mukdahan, Nakhon Ratchasima, Sisaket since 20 March caused by the high pressure area that extends from China covering the upper part of Thailand have affected more than 1K persons and damaged around 227 houses as reported by the Department of Disaster Prevention and Mitigation ([DDPM](#)).

HYDRO-METEO-CLIMATOLOGICAL:



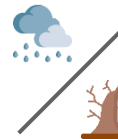
For the past week, data from the ASEAN Specialised Meteorological Centre ([ASMC](#)) showed high 7-day average rainfall spreading across Borneo Island, Papua Islands, western and southern parts of Sumatra, central Sulawesi, and northern parts of Luzon. A tropical disturbance (Invest 95S), 1,200 km southwest of Sumatra, Indonesia has been reported by [JTWC](#). However, this is moving westwards or away from the region and has a low potential to develop into a tropical cyclone in 24 hours.

GEOPHYSICAL:



Six (6) significant earthquakes (M≥5.0) were recorded in the region by Indonesia's Badan Meteorologi Klimatologi dan Geofisika ([BMKG](#)) and the Philippine Institute of Volcanology and Seismology ([PHIVOLCS](#)). Mount Sinabung (alert level III) in Indonesia and Taal Volcano in the Philippines (alert level 2) reported recent volcanic activity and under close monitoring. Volcanic activity also reported for Mount Semeru, Ibu, Dukono and Kerinci in Indonesia, as reported by [PVMBG](#).

OUTLOOK:



For the coming week, according to [ASMC](#), wetter conditions are expected over the eastern Maritime Continent, northern and central parts of Sumatra, the Malay Peninsula and western Borneo; drier conditions are expected over eastern parts of Mainland Southeast Asia; warmer conditions are expected over most of Mainland Southeast Asia, in particular for Myanmar; cooler conditions are expected over northern parts of Sumatra, the Malay Peninsula and western Borneo. There is a moderate increase in chance for a very heavy rainfall event to occur in Peninsular Malaysia and western Borneo and small increase in chance in northern and central parts of Sumatra, northeastern Borneo and northern Sulawesi; moderate increase in chance for extreme hot conditions in northern, western and southern parts of Myanmar; small increase in chance for extreme cold conditions in southeastern coastal Peninsular Malaysia.