



ONE ASEM
ONE RESPONSE

WEEKLY DISASTER UPDATE

Week 17
26 Apr – 2 May 2021



The AHA Centre, GRAHA BNPB 13th floor,
Jl. Raya Pramuka Kav. 38, East Jakarta 13120 Indonesia

SOURCES

ASEAN Disaster Monitoring & Response System (DMRS);
ASEAN Specialised Meteorological Centre (ASMC); Joint
Typhoon Warning Centre (JTWC)

Indonesia: BNPB, BMKG, PVMBG;
Philippines: NDRRMC, PAGASA, PHIVOLCS;

Various news agencies

DISCLAIMER

The AHA Centre was established in November 2011 by the
Association of Southeast Asian Nations (ASEAN) Member
States to facilitate cooperation and coordination among
Member States, relevant agencies of the United Nations
and international organisations in disaster management and
emergency response.

This update consists of significant natural disaster events
that occurred in ASEAN Member States – Brunei
Darussalam, Cambodia, Indonesia, Lao PDR, Malaysia,
Myanmar, Philippines, Singapore, Thailand, and Viet Nam.
The disasters recorded include Drought, Flood, Earthquake,
Tsunami, Volcano, Wind, Landslide, and Storm.

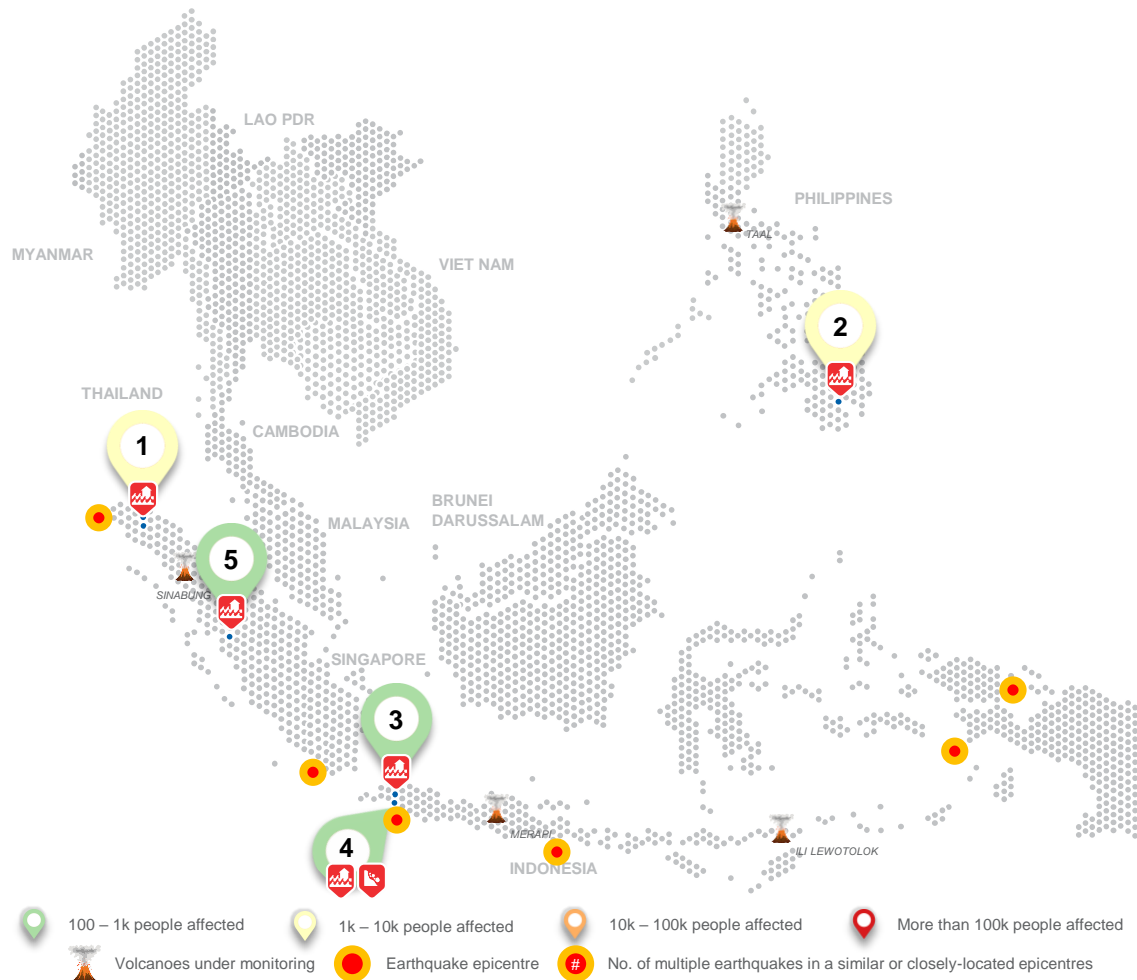
The use of boundaries, geographic names, related
information, and potential considerations for response are
for reference, not warranted to be error-free or implying
official endorsement from ASEAN Member States.

© 2021 AHA Centre.
All rights reserved.

For inquiries, comments, and/or suggestions,
you may reach us through dmsa@ahacentre.org



SCAN TO SUBSCRIBE



REGIONAL TALLY



Note: Estimations are based on data reported/confirmed by National
Disaster Management Organisations of each respective ASEAN
Member State and other verified sources

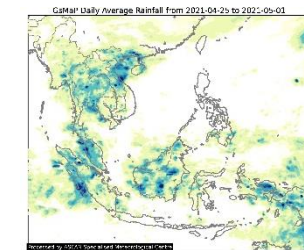
REGIONAL SUMMARY:

A total of 6 disasters (5 floods and 1 landslide) affected the region in the
seventeenth week of 2021. Indonesia and the Philippines have reportedly
been affected. Several localised heavy rainfall which caused some rivers to
overflow triggered floods in Indonesia as reported by Indonesia's Badan
Nasional Penanggulangan Bencana (BNPB). Heavy rains caused by a localised
thunderstorm triggered a flood in Davao del Sur, Philippines as reported by
the National Disaster Risk Reduction and Management Council (NDRMMC).

HIGHLIGHT:

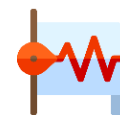
According to the reports from the NDRMMC, moderate to heavy rain with
lightning and strong winds due to thunderstorms were experienced on 26 Apr
in Davao City and Davao del Norte causing flooding in two (2) districts in
Davao City. A total of 2,243 families (9,784 persons) were affected in
Bunawan and Buhangin-B districts. 162 families (419 persons) took refuge in
five (5) evacuation centres while the rest took refuge in their own homes.
The local disaster management agency has done assessments and
coordinated with relevant authorities in aid of the victims.

HYDRO-METEO-CLIMATOLOGICAL:



For the past week, data from the ASEAN
Specialised Meteorological Centre
(ASMC) shows localised heavy rainfall
across mainland Southeast Asia,
Sumatra, Kalimantan, and Papua in
Indonesia. As of reporting, there are no
tropical cyclone advisories in the region
(JTWC). La Niña conditions are
weakening but can still affect the rainfall
and temperature patterns in the region.

GEOPHYSICAL:



Six (6) significant earthquakes ($M \geq 5.0$) were recorded in the
region by Indonesia's Badan Meteorologi Klimatologi dan
Geofisika (BMKG). Mt. Sinabung and Mt. Ili Lewotolok (Alert
Level III) in Indonesia and Taal volcano in the Philippines (Alert
Level 2) (PHIVOLCS) reported recent volcanic activity and is
under close monitoring. Lastly, Semeru and Dukono in
Indonesia remain on Alert Level II despite recent volcanic
activity per PVMBG.

OUTLOOK:



For the coming week, the ASMC forecasts wetter conditions
and cooler temperatures for western and central Maritime
Continent (extending to coastal regions of Southern Viet Nam;
and drier conditions for southern parts of the Maritime
Continent; For the regional assessment of extremes, there is a
small increase in chance for a very heavy rainfall event in
chance in Southern Thailand; moderate increase in chance for
extreme cold conditions in Northern Sumatra, parts of
Malaysia, and Southern Thailand.