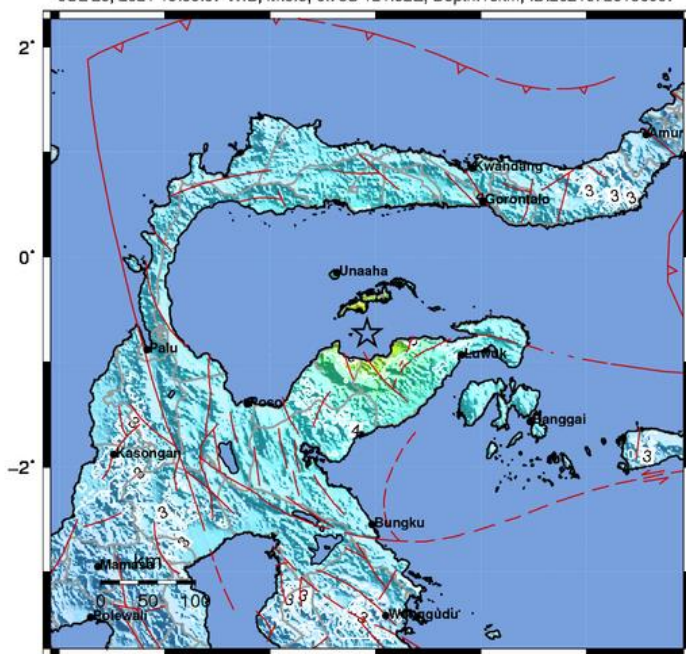


TUESDAY  
27 JUL 2021  
1000 HRS UTC +7

# M 6.5 EARTHQUAKE IN TOJO UNA UNA INDONESIA FLASH UPDATE #1



BMKG ShakeMap : Pusat gempa berada dilaut 59km TimurLaut Tojouna-una  
JUL 26, 2021 19:09:07 WIB, M:6.5, 0.73S 121.92E, Depth:10km, ID:20210726190907



Map Version 1 Processed Mon Jul 26, 2021 12:29:20 WIB

PERCEIVED SHAKING	Not felt	Weak	Light	Moderate	Strong	Very strong	Severe	Violent	Extreme
POTENTIAL DAMAGE	none	none	none	Very light	Light	Moderate	Mod./Heavy	Heavy	Very heavy
MMI	I	II-III	IV	V	VI	VII	VIII	IX	X+

Scale based upon Worden et al. (2011)

## EXPOSURE

Disclosure(s): The information and data contained in this product are for reference only. Pacific Disaster Center (PDC) does not guarantee the accuracy of these data. Refer to original sources for any legal restrictions.

48,336

ESTIMATED POPULATION EXPOSED

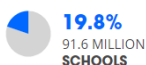
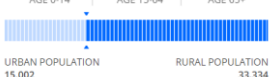
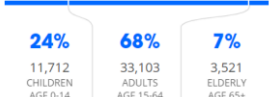
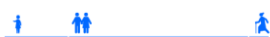
10,742

ESTIMATED HOUSEHOLDS EXPOSED



\$463 Million

ESTIMATED REPLACEMENT VALUE OF BUILDINGS AND INFRASTRUCTURE



## Indonesia

- At 1909 HRS UTC+7 of 26 July, a M6.5 tectonic earthquake with epicentre at 121.92°E, 0.73°S and a depth of 10km (located 59 km Northeast of Tojo Una Una) rocked several areas in Sulawesi, Indonesia, including: Ampana **V - VI MMI** (Felt by most of people, many people frightened and run outdoors); in Luwuk, Poso, Morowali **V MMI** (Felt by most of people, many people wake up); and Bolmong Selatan, Bolmong Timur, Kotamobagu, Gorontalo City, Gorontalo Regency, Buol, Bone Bolango, Pohuwato **III-IV MMI** (many people felt it in the house during the day). (source: [BMKG](#))
- Considering the location of the epicentres of the location and the depth of the hypocentre, the earthquakes that occurred are results of the activity of the local fault (near Balantak Fault). Analysis shows that the earthquakes have a normal fault mechanism according to the Indonesia's Badan Meteorologi, Klimatologi dan Geofisika ([BMKG](#)).
- Further, according to [BMKG](#), modeling results show that this earthquake **DOES NOT have a TSUNAMI POTENTIAL**.
- [BMKG](#) monitoring results showed that there was seven aftershocks with a maximum magnitude of M4.2 as of 26 July at 2220 HRS UTC+7.
- Historically, since 1923 there was eight strong earthquakes (more than M6.0) including M6.5 earthquake that occurred in 26 July 2021.
- According to the ASEAN Disaster Monitoring and Response System ([DMRS](#)) and Pacific Disaster Center ([PDC Global](#)), based on the preliminary data, earthquakes of this depth and magnitude are expected to result in moderate to severe shaking within 130.0 km (80.78 miles) from the epicenter. It is estimated that **429,193 people, 95,376 households, and \$3.96 Billion (USD) of infrastructure** (total replacement cost) are concentrated within this radius.
- According to [BNPB](#), as of 26 July at 2056 HRS UTC+7, Badan Nasional Penanggulangan Daerah (BPBD) Tojo Una Una Regency reported that the M6.5 earthquake was felt strongly for three seconds in Tojo Una Una Regency. A few areas are experienced [power outage](#) short after the earthquake hit.
- [BMKG](#) advised people that reside on the coasts of Bolaang and Bunta to stay away from the beach, to stay calm, and not be influenced by issues that cannot be justified. It was also advised to avoid buildings that are cracked or damaged by the earthquake.
- According to Pusat Vulkanologi dan Bencana Geologi ([PVMBG](#)), Central Sulawesi Province is located in the low to high earthquake disaster prone area including Tojo Una Una Regency.
- As of 27 July at 0957 HRS UTC+7, [BNPB](#) reported that some people previously displaced to higher places have already come back to their houses.
- The AHA Centre will continue to monitor for further developments and issue necessary updates.

## DATA SOURCES

ASEAN Disaster Monitoring & Response System (DMRS); Pacific Disaster Center (PDC Global);

Indonesia: BNPB, BMKG, PVMBG

Verified news media agencies

## DISCLAIMER

The AHA Centre was established in November 2011 by the Association of Southeast Asian Nations (ASEAN) Member States to facilitate cooperation and coordination among the Member States, relevant agencies of the United Nations, and international organisations in disaster management and humanitarian assistance.

The use of boundaries, geographic names, related information and potential considerations for response are for reference, not warranted to be error free or implying official endorsement from ASEAN Member States.

© 2021 AHA Centre.

All rights reserved.

You are receiving this email because you are registered in our distribution list.

Our mailing address is:

AHA Centre,  
GRAHA BNPB 13<sup>th</sup> Floor,  
Jl. Raya Pramuka Kav. 38,  
Jakarta 13120 Indonesia