



ONE ASEAN
ONE RESPONSE

WEEKLY DISASTER UPDATE

Week 30
26 Jul – 01 Aug 2021



The AHA Centre, GRAHA BNPB 13th floor,
Jl. Raya Pramuka Kav. 38, East Jakarta 13120 Indonesia

SOURCES

ASEAN Disaster Monitoring & Response System (DMRS);
ASEAN Specialised Meteorological Centre (ASMC); Joint
Typhoon Warning Centre (JTWC)

Indonesia: BNPB, BMKG, PVMBG;
Myanmar: DDM, DMH;
Philippines: NDRRMC, PAGASA, PHIVOLCS;
Thailand: DDPM

Various news agencies

DISCLAIMER

The AHA Centre was established in November 2011 by the
Association of Southeast Asian Nations (ASEAN) Member
States to facilitate cooperation and coordination among
Member States, relevant agencies of the United Nations
and international organisations in disaster management and
emergency response.

This update consists of significant natural disaster events
that occurred in ASEAN Member States – Brunei
Darussalam, Cambodia, Indonesia, Lao PDR, Malaysia,
Myanmar, Philippines, Singapore, Thailand, and Viet Nam.
The disasters recorded include Drought, Flood, Earthquake,
Tsunami, Volcano, Wind, Landslide, and Storm.

The use of boundaries, geographic names, related
information, and potential considerations for response are
for references, not warranted to be error-free or implying
official endorsement from ASEAN Member States.

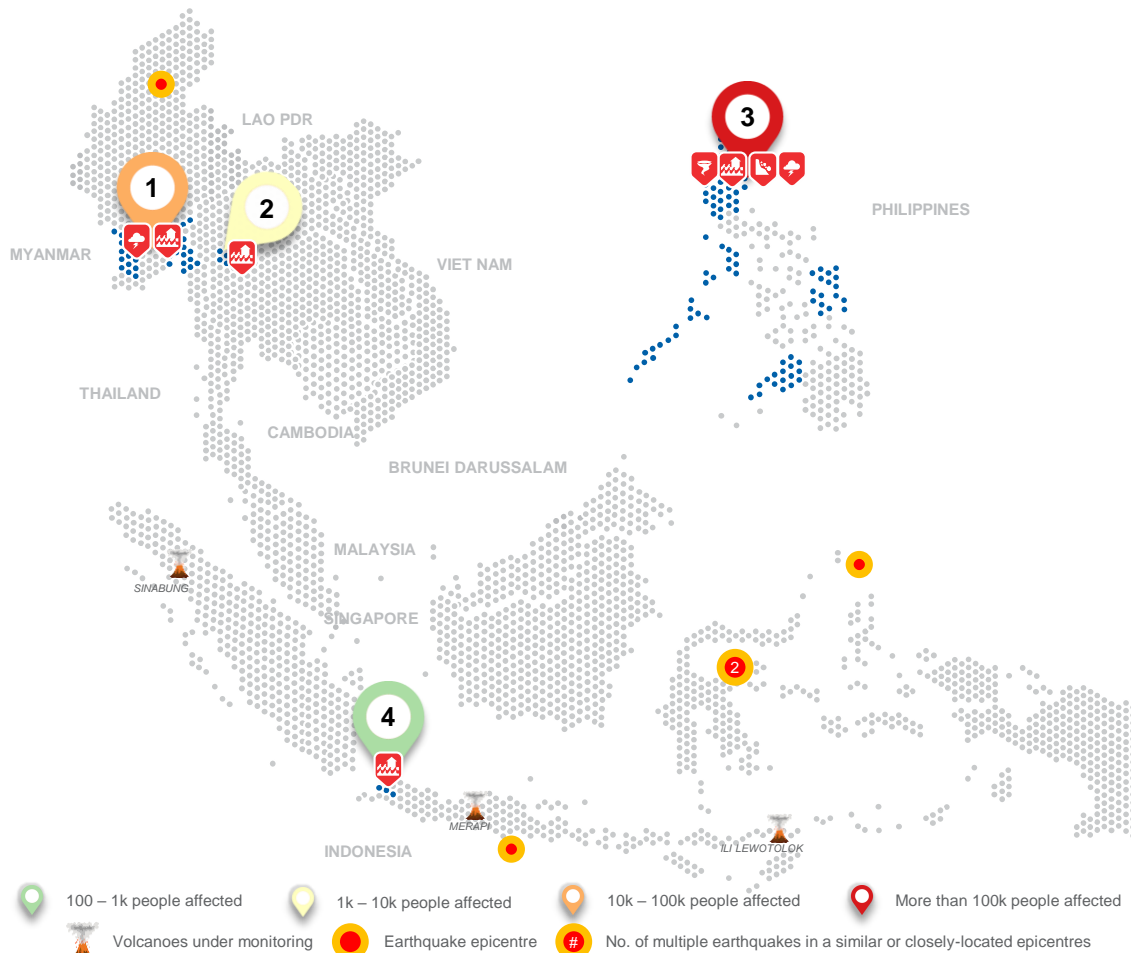
© 2021 AHA Centre.
All rights reserved.

For inquiries, comments, and/or suggestions,
you may reach us through dma@ahacentre.org

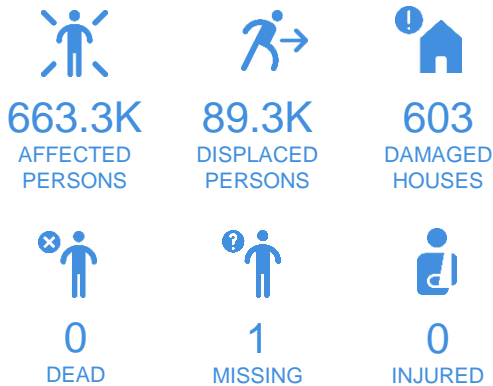


You are receiving this email because you are
registered in our distribution list.

SCAN TO SUBSCRIBE



REGIONAL TALLY



Note: Estimations are based on data reported/confirmed by National
Disaster Management Organisations of each respective ASEAN
Member State and other verified sources

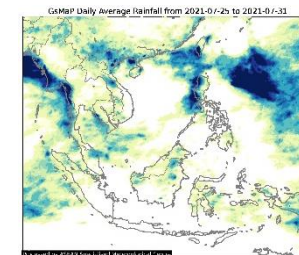
REGIONAL SUMMARY:

For the thirtieth (30th) week of 2021, a total of 9 disasters (5 floods, 1 landslide, 2 storms, and 1 wind-related) affected the region. Myanmar, Thailand, The Philippines, and Indonesia have reportedly been affected. The Department of Disaster Management ([DDM](#)) of Myanmar reported flooding in Kayin, Mon, and Rakhine states. Heavy rainfall and the overflowing of the Mei River caused flooding in Tak, Thailand according to the Department of Disaster Prevention and Mitigation ([DDPM](#)). The National Disaster Risk Reduction of Management Council ([NDRRMC](#)) of the Philippines reported that the Southwest Monsoon has caused flooding, landslides, storms, and wind in multiple regions. Meanwhile, high-intensity rainfall and the overflowing of rivers flooded areas in Banten and West Java in Indonesia as reported by the Badan Nasional Penanggulangan Bencana ([BNPB](#)).

HIGHLIGHT:

The [NDRRMC](#) reported that the Southwest Monsoon has affected Regions 3, 8, 9, MIMAROPA, CAR, and NCR of the Philippines. A total of 236 areas were reported to have been flooded, 33 of which have already subsided and 26 already receding. Four (4) rain-induced landslides were also reported. The Southwest Monsoon has affected 179.3K families (613.5K persons) in 610 barangays, displaced 40.8K people into 137 evacuation centres and their friends and relative's homes with 1 reported missing person. A total of 289 houses were damaged (248 partially, 41 totally). Around 6.8M USD worth of damages to agriculture and 721K USD to infrastructure were also reported. Assistance amounting to 27.7K USD have been provided to victims in Region 3, MIMAROPA, and CAR. Situation assessment and monitoring and coordination between relevant authorities are continuously on-going for any developments.

HYDRO-METEO-CLIMATOLOGICAL:



For the past week, data from the ASEAN Specialised Meteorological Centre ([ASMC](#)) showed noticeable high 7-day average rainfall in Southern Myanmar, and Western Luzon of the Philippines as effects of the Southwest Monsoon as reported by the Philippine Atmospheric Geophysical and Astronomical Services Administration ([PAGASA](#)) and the Department of Meteorology and Hydrology ([DMH](#)) of Myanmar. The [JTWC](#) detected three disturbances 96W, 97W, and 98W with high, low, and high chances to develop into a significant tropical cyclone within 24 hours, respectively. 96W is forecast to head northeastward and 98W north-northeastward. No forecast for 97W's path and intensity.

GEOPHYSICAL:

Five (5) significant earthquakes (M≥5.0) were recorded in the region by Indonesia's Badan Meteorologi Klimatologi dan Geofisika ([BMKG](#)), the Philippine Institute of Volcanology and Seismology ([PHIVOLCS](#)) and Department of Meteorology and Hydrology ([DMH](#)). Sinabung and Ili Lewotolok in Indonesia (alert level III) and Taal Volcano in the Philippines (alert level 2) reported recent volcanic activity and are under close monitoring. Volcanic activity was also reported for Mount Semeru, Dukono, and Ibu in Indonesia according to Pusat Vulkanologi Dan Mitigasi Bencana Geologi ([PVMBG](#)) and [PHIVOLCS](#).

OUTLOOK:

According to the [ASMC](#), drier conditions are expected over much of the northern ASEAN region; wetter conditions are expected over much of the Southern and Western Maritime Continent; warmer conditions are expected over much of the ASEAN region. For the regional assessment of extremes, there is a small increase in chance for a very heavy rainfall event to occur in North and Western parts of Sumatra, and the Southern Maritime Continent; a small increase in chance for extended dry conditions to occur in Central and Eastern parts of Thailand and Viet Nam, and the Philippines; a moderate increase in chance in Southern Maritime Continent and a small increase in chance for the rest of the Maritime Continent for extreme hot conditions.