



ONE ASEAN
ONE RESPONSE

WEEKLY DISASTER UPDATE

Week 35
30 Aug – 05 Sep 2021



The AHA Centre, GRAHA BNPB 13th floor,
Jl. Raya Pramuka Kav. 38, East Jakarta 13120 Indonesia

SOURCES

ASEAN Disaster Monitoring & Response System (DMRS);
ASEAN Specialised Meteorological Centre (ASMC); Joint
Typhoon Warning Centre (JTWC)

Indonesia: BNPB, BMKG, PVMBG;
Malaysia: NADMA;
Philippines: NDRRMC, DSWD, PHIVOLCS;
Thailand: DDPM;
Viet Nam: VNDMA;

Various news agencies

DISCLAIMER

The AHA Centre was established in November 2011 by the
Association of Southeast Asian Nations (ASEAN) Member
States to facilitate cooperation and coordination among
Member States, relevant agencies of the United Nations
and international organisations in disaster management and
emergency response.

This update consists of significant natural disaster events
that occurred in ASEAN Member States – Brunei
Darussalam, Cambodia, Indonesia, Lao PDR, Malaysia,
Myanmar, Philippines, Singapore, Thailand, and Viet Nam.
The disasters recorded include Drought, Flood, Earthquake,
Tsunami, Volcano, Wind, Landslide, and Storm.

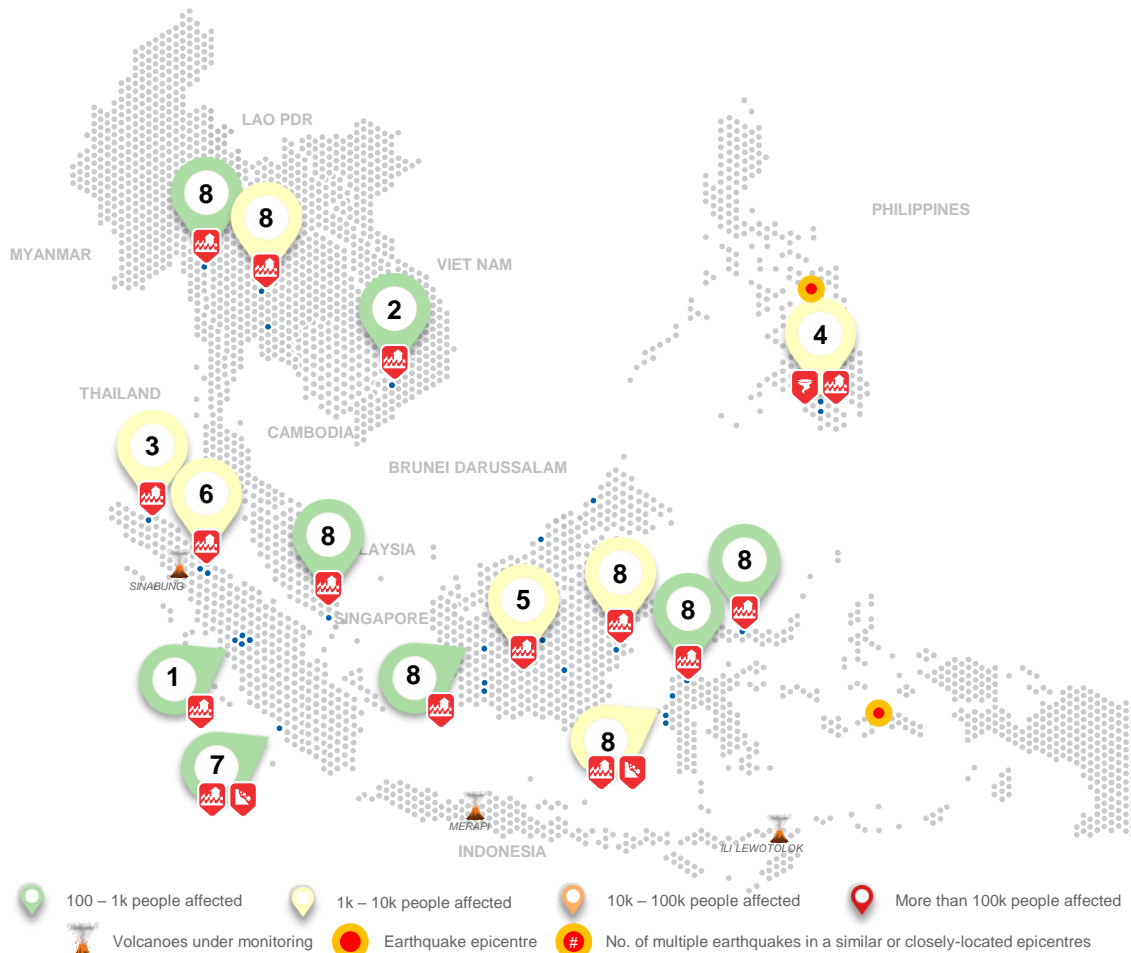
The use of boundaries, geographic names, related
information, and potential considerations for response are
for references, not warranted to be error-free or implying
official endorsement from ASEAN Member States.

© 2021 AHA Centre.
All rights reserved.

For inquiries, comments, and/or suggestions,
you may reach us through dma@ahacentre.org



You are receiving this email because you are
registered in our distribution list.
SCAN TO SUBSCRIBE



REGIONAL TALLY



Note: Estimations are based on data reported/confirmed by National
Disaster Management Organisations of each respective ASEAN
Member State and other verified sources

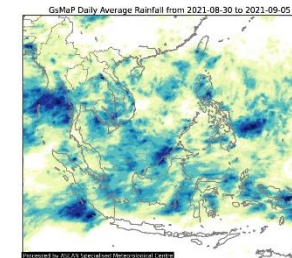
REGIONAL SUMMARY:

For the thirty-fifth (35th) week of 2021, a total of 24 disasters (21 floods, 2 landslides, and 1 wind-related) affected the region. Indonesia, Malaysia, the Philippines, Thailand, and Viet Nam have reportedly been affected. Flooding caused by heavy rainfall and the overflowing rivers has been reported by Indonesia's Badan Nasional Penanggulangan Bencana ([BNPB](#)) and Thailand's Department of Disaster Prevention and Mitigation ([DDPM](#)). In Malaysia, heavy rainfall has caused flooding in different states as reported by the Agensi Pengurusan Bencana Negara ([NADMA](#)). Meanwhile in the Philippines, heavy rain due to the Inter-Tropical Convergence Zone was reported by the National Disaster Risk Reduction and Management Council ([NDRRMC](#)). Lastly, in Viet Nam, prolonged heavy rainfall caused flooding as reported by the Viet Nam Disaster Management Agency ([VNDMA](#)).

HIGHLIGHT:

According to [BNPB](#), prolonged moderate to heavy rainfall and the overflowing of rivers across Kalimantan from 1-3 September has caused flooding in several provinces and several regencies (Seruyan, Lamandau, Murung Raya, and Barito Utara in Central Kalimantan; Melawi in West Kalimantan; Samarinda in East Kalimantan). In total, 12K families (23K persons) have been affected in Kalimantan. Reports of damages include 11 schools, 7 health facilities, 12 places of worship, and 6 government/public facilities. Local disaster management agencies have carried out necessary actions and continue to monitor and assess the situation as some areas remain under the risk of flooding as rain and floods persist.

HYDRO-METEO-CLIMATOLOGICAL:



For the past week, data from the ASEAN
Specialised Meteorological Centre ([ASMC](#))
showed sparse high 7-day average rainfall
across the ASEAN region. Tropical Cyclone
advisories have been issued by the [JTWC](#) for
TD 18W (local name: Jolina) and INVEST
94W. TD 18W is moving West-Northwestward
and is forecast to move parallel to the east
coast of the Philippines before its landfall as a
low-pressure area in Northern Luzon on 10
Sep. 94W is moving northwestward and is not
seen to have direct impacts to the region.

GEOPHYSICAL:

Two (2) significant earthquakes ($M \geq 5.0$) were recorded in the region by Indonesia's
Badan Meteorologi Klimatologi dan Geofisika ([BMKG](#)) and the Philippine Institute for
Volcanology and Seismology ([PHIVOLCS](#)). Volcanic activity was reported for Mount
Semeru and Ibu (Alert level II) in Indonesia according to Pusat Vulkanologi dan Mitigasi
Bencana Geologi ([PVMBG](#)) and Taal Volcano (Alert Level 2), and Mount Kanlaon (Alert
Level 1) according to [PHIVOLCS](#).

OUTLOOK:

According to the [ASMC](#), for the coming week, wetter conditions should be expected over
the central and eastern Maritime Continent, most of Mainland Southeast Asia, and the
Northern parts of the Philippines. Warmer temperatures should be expected over the
Southern Maritime Continent. For the regional assessment of extremes, there is a small
chance for a very heavy rainfall event to occur in parts of Southern Mainland Southeast
Asia, southern tip of the Philippines, and eastern Borneo; moderate increase in chance
for parts of central and eastern Maritime Continent. There is also a moderate increase in
chance for extreme hot conditions to occur in the Southern Maritime Continent. A
negative Indian Ocean Dipole (IOD) has developed in the Indian Ocean, with warmer
sea surface temperatures. At a seasonal timescale, negative IOD events tend to bring
wetter conditions to the Southern Maritime Continent.