



ONE ASEAN
ONE RESPONSE

WEEKLY DISASTER UPDATE

Week 36
06 – 12 September 2021



The AHA Centre, GRAHA BNPB 13th floor,
Jl. Raya Pramuka Kav. 38, East Jakarta 13120 Indonesia

SOURCES

ASEAN Disaster Monitoring & Response System (DMRS);
ASEAN Specialised Meteorological Centre (ASMC); Joint
Typhoon Warning Centre (JTWC)

Cambodia: NCDM
Indonesia: BNPB, BMKG, PVMBG;
Lao PDR: NDMD, MOLSW;
Myanmar: DMH;
Philippines: NDRRMC, PAGASA, PHIVOLCS;
Thailand: DDPM;
Viet Nam: VNDMA;
Various news agencies

DISCLAIMER

The AHA Centre was established in November 2011 by the
Association of Southeast Asian Nations (ASEAN) Member
States to facilitate cooperation and coordination among
Member States, relevant agencies of the United Nations
and international organisations in disaster management and
emergency response.

This update consists of significant natural disaster events
that occurred in ASEAN Member States – Brunei
Darussalam, Cambodia, Indonesia, Lao PDR, Malaysia,
Myanmar, Philippines, Singapore, Thailand, and Viet Nam.
The disasters recorded include Drought, Flood, Earthquake,
Tsunami, Volcano, Wind, Landslide, and Storm.

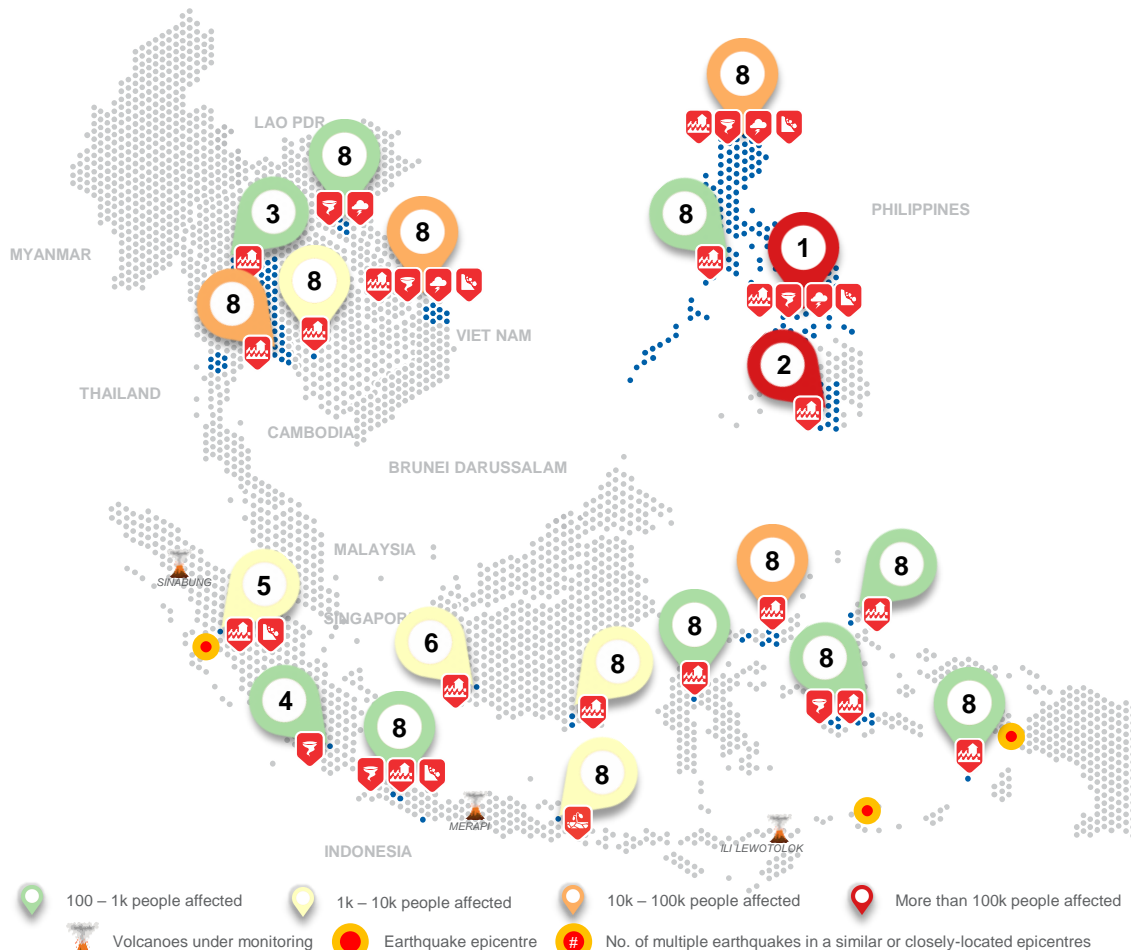
The use of boundaries, geographic names, related
information, and potential considerations for response are
for references, not warranted to be error-free or implying
official endorsement from ASEAN Member States.

© 2021 AHA Centre.
All rights reserved.

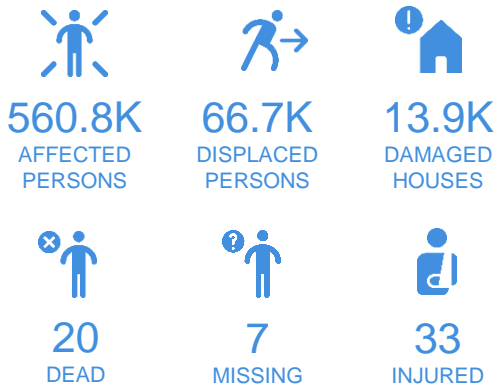
For inquiries, comments, and/or suggestions,
you may reach us through dma@ahacentre.org



SCAN TO SUBSCRIBE



REGIONAL TALLY



Note: Estimations are based on data reported/confirmed by National
Disaster Management Organisations of each respective ASEAN
Member State and other verified sources

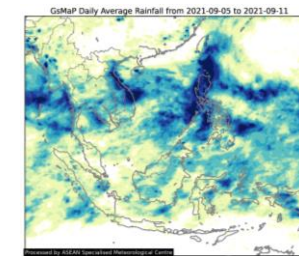
REGIONAL SUMMARY:

For the thirty-sixth (36th) week of 2021, a total of 44 disasters (2 drought, 24 floods, 7 landslides, 5 storms, and 6 wind-related) affected the region. Cambodia, Indonesia, Lao PDR, Philippines, Thailand, and Viet Nam have reportedly been affected. Moderate to heavy rainfall caused a flooding event in Banteay Meanchey Province as reported by Cambodia's National Committee for Disaster Management ([NCDM](#)). Hydro-meteorological (drought, flooding, landslides, and winds) have been reported in thirteen (13) provinces in Indonesia as reported by Badan Nasional Penanggulangan Bencana ([BNPB](#)). Lao PDR's Ministry of Labour and Social Welfare ([MOLSW](#)) reported storms and winds in Salavanh Province. Tropical Cyclone (TC) CONSON, CHANTHU and the Southwest monsoon affected 12 regions in the Philippines as reported by the National Disaster Risk Reduction and Management Council ([NDRRMC](#)). Flooding occurred in twenty-seven (27) provinces as reported by Thailand's Department of Disaster Prevention and Mitigation ([DDPM](#)). Lastly, TC CONSON affected South Central Coast as reported by the Vietnam National Disaster Management Authority ([VNDMA](#)).

HIGHLIGHT:

For the past week, according to the [NDRRMC](#) and [VNDMA](#), TC CONSON resulted in a floods, soil erosions, rain-induced landslides, impassable roads, fallen trees, maritime incident, and storm surges, across Philippines and Viet Nam. According to the report, TC CONSON made [landfall](#) in Eastern Samar (6 Sep), Samar (7 Sep), Masbate (7 Sep), Marinduque (8 Sep), and Batangas (8 Sep) in the Philippines and [weakened into a low pressure area](#) before making a landfall in the landmass of Viet Nam. The events in total have affected 92.1K families (345.9K people), displaced 62.4K people, and caused damages to 8.9K houses, injured 24 people, 14 missing people and claimed the lives of 18 individuals (17 in the Philippines and 1 in Viet Nam). A total of 14.6M USD worth of damages to agriculture and infrastructure were reported by [NDRRMC](#). Financial assistance and family food packs worth 26.6K USD were also distributed to the affected victims.

HYDRO-METEO-CLIMATOLOGICAL:



For the past week, data from the ASEAN
Specialised Meteorological Centre ([ASMC](#))
showed high 7-day average rainfall spreading
across Papua Islands, Indonesia, central and
northern Philippines and central and north central
Viet Nam as a result of Tropical Cyclones
CONSON and CHANTHU, and eastern parts of
Myanmar. As of reporting, TC CONSON has been
forecasted to have weakened into a low pressure
area and TC CHANTHU and INVEST 95B are
located outside/moving away from the Region
([NCHMF Viet Nam](#), [DMH Myanmar](#), [JTWC](#)).

GEOPHYSICAL:

Three (3) significant earthquakes ($M \geq 5.0$) were recorded in the region by Indonesia's Badan Meteorologi Klimatologi dan Geofisika ([BMKG](#)) and the Philippine Institute of Volcanology and Seismology ([PHIVOLCS](#)). Merapi in Indonesia (alert level III) and Taal in the Philippines (alert level II) reported recent volcanic activity and are under close monitoring. Volcanic activity was also reported for Semeru, Ibu, and Dukono in Indonesia and Kanlaon in the Philippines according to Pusat Vulkanologi dan Mitigasi Bencana Geologi ([PVMBG](#)) and [PHIVOLCS](#).

OUTLOOK:

According to the [ASMC](#), wetter conditions are expected over much of the central and eastern Maritime Continent; warmer conditions are expected over the southern Maritime Continent. For the regional assessment of extremes, there is a small increase in chance for a very heavy rainfall event to occur in the parts of eastern Maritime Continent, southern tip of the Philippines and eastern Borneo; a moderate increase in chance for extreme hot conditions to occur in Southern Maritime Continent.