



ONE ASEM  
ONE RESPONSE

# WEEKLY DISASTER UPDATE

Week 48  
29 Nov – 5 Dec 2021



The AHA Centre, GRAHA BNPB 13th floor,  
Jl. Raya Pramuka Kav. 38, East Jakarta 13120 Indonesia

## SOURCES

ASEAN Disaster Monitoring & Response System (DMRS);  
ASEAN Specialised Meteorological Centre (ASMC); Joint  
Typhoon Warning Centre (JTWC)

Indonesia: BNPB, BMKG, PVMBG;  
Viet Nam: VNDMA, NCHMF;

Various news agencies

## DISCLAIMER

The AHA Centre was established in November 2011 by the  
Association of Southeast Asian Nations (ASEAN) Member  
States to facilitate cooperation and coordination among  
Member States, relevant agencies of the United Nations  
and international organisations in disaster management and  
emergency response.

This update consists of significant natural disaster events  
that occurred in ASEAN Member States – Brunei  
Darussalam, Cambodia, Indonesia, Lao PDR, Malaysia,  
Myanmar, Philippines, Singapore, Thailand, and Viet Nam.  
The disasters recorded include Drought, Flood, Earthquake,  
Tsunami, Volcano, Wind, Landslide, and Storm.

The use of boundaries, geographic names, related  
information, and potential considerations for response are  
for references, not warranted to be error-free or implying  
official endorsement from ASEAN Member States.

© 2021 AHA Centre.  
All rights reserved.

For inquiries, comments, and/or suggestions,  
you may reach us through [dma@ahacentre.org](mailto:dma@ahacentre.org)



You are receiving this email because you are  
registered in our distribution list.

SCAN TO SUBSCRIBE



## REGIONAL TALLY



Note: Estimations are based on data reported/confirmed by National  
Disaster Management Organisations of each respective ASEAN  
Member State and other verified sources

## REGIONAL SUMMARY:

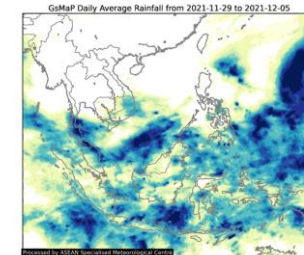
For the forty-eighth (48<sup>th</sup>) week of 2021, a total of 27 disasters (22 floods, 3 landslides, 1 wind-related, 1 volcanic eruption) affected the region. Indonesia and Viet Nam have reportedly been affected. Rain-induced landslides, and several localised high-intensity rainfall that caused rivers to overflow resulting in floods, a tornado, and eruption of a volcano were reported by Indonesia's Badan Nasional Penanggulangan Bencana (BNPB). Lastly, the Viet Nam National Disaster Management Authority (VNDMA) reported flooding and landslides to have occurred due to heavy rains and the overflowing of rivers in several provinces.

## HIGHLIGHT:

According to VNDMA, heavy rain has resulted into floods and landslides in the provinces of Quang Nam, Quang Ngai, Binh Dinh, Phu Yen, and Kon Tum. As of reporting, the events in Viet Nam have resulted to 18 deaths, 59,739 families (estimated 298,695 persons) affected, 30,150 displaced, and 59,739 houses flooded. Reports from VNDMA that flooding even reached 1.2 metres in Tuy Phuoc District in Binh Dinh Province and that roads (including several national highways) have been cut off by flooding or landslides. VNDMA ensures that necessary actions have been taken by responsible agencies and are continuously monitoring and assessing the situation.

Meanwhile in Indonesia, the eruption of Mount Semeru on 4 Dec, has affected 1,041 families (5,205 persons), displaced 1,707 into 19 evacuation centres, and caused the death of 15 individuals, injuries to 169 persons, and reports of 27 others that are missing in Lumajang Regency. Close to 3K houses, 1 bridge, 12 schools, 13 government/public facilities have reportedly been damaged. 79.1K USD worth of assistance have already been provided to the affected families. Emergency Response Status has been instated for 30 days (4 Dec 2021 – 3 Jan 2022). Search and rescue and emergency response operations are underway. Mount Semeru remains on Alert Level II as per PVMBG.

## HYDRO-METEO-CLIMATOLOGICAL:



For the past week, data from the ASEAN Specialised Meteorological Centre (ASMC) showed noticeably high 7-day average rainfall in the Western Pacific due to the development of TC "Nyatho" and across the equatorial region (Southern Thailand, Malaysia, Indonesia). La Niña conditions are now present and entails wetter conditions for the region. As of reporting, there are no tropical cyclone advisories (JTWC).

## GEOPHYSICAL:

Six (6) significant earthquakes (M≥5.0) were recorded in the region by Indonesia's Badan Meteorologi Klimatologi dan Geofisika (BMKG) and the Philippine Institute for Volcanology and Seismology (PHIVOLCS). Mount Semeru in Indonesia erupted on 4 Dec and remains on Alert Level II according to Pusat Vulkanologi dan Mitigasi Bencana Geologi (PVMBG). Volcanic activity was reported for Merapi (Alert Level III) in Indonesia according to PVMBG and Taal Volcano (Alert Level 2), and Mount Pinatubo and Kanlaon (Alert Level 1) PHIVOLCS.

## OUTLOOK:

According to the ASMC, for the coming week, wetter conditions should be expected over southern Mainland Southeast Asia, parts of the Philippines, and the Southeastern Maritime Continent; drier conditions and warmer temperatures for the western and central equatorial regions, and cooler temperatures for much of mainland Southeast Asia. For the regional assessment of extremes, there is a small increase in chance for a very heavy rainfall event for northwestern and southern mainland Southeast Asia, central Philippines, and the southeastern Maritime Continent; small increase in chance for extended dry conditions in western and central equatorial region and a moderate chance in Northeast Mainland Southeast Asia; and a moderate increase in chance for extreme hot conditions in Northwestern Myanmar and much of the equatorial region.