

TUESDAY
20 FEB 2018
12:00 UTC+7

Mount Sinabung, Indonesia

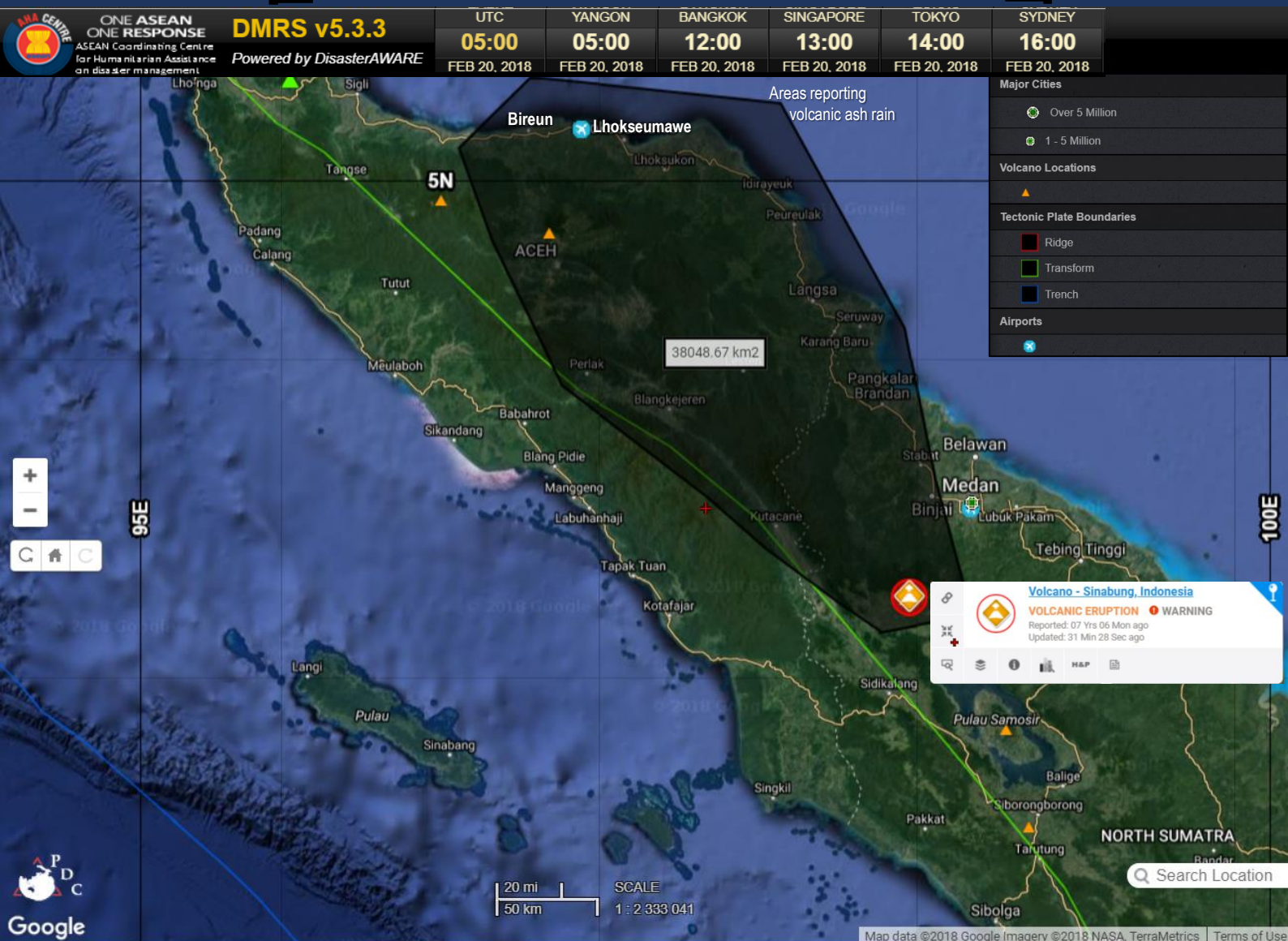
2018 Eruption and Update

Flash Update No. 01

adinet.ahacentre.org/reports/view/212



ONE ASEAN ONE RESPONSE



Indonesia, Mount Sinabung, 19 February 2018 Eruption & Update

- 1) **PVMBG** reported eruption of Mount Sinabung in Karo Regency on 19 February 2018, at 01:53 UTC (08:53 local time). The eruption lasted for 291 seconds and released ash-cloud more than 5000 meter (best estimate at 7460 m) above sea level.
- 2) Volcano Observatory Notice for Aviation (**VONA**) was raised to **Red** from 19 Feb 2018, 0213Z. Some flights to/from **Kualanamu Airport (KNO)** have been cancelled/delayed.
- 3) Ash rain was reported in regencies of North Sumatra and Aceh provinces: **Karo, North Aceh, Bireun, Aceh Tamiang, Aceh Tenggara** (max. pop. at risk: 5.2 mil)
- 4) ASEAN Disaster Monitoring & Response System (**DMRS**) triggered 'Warning' alert for this event.
- 5) Indonesian National Disaster Management Authority (**BNPB**) & Karo Regency Disaster Management Agency (BPBD) reported **zero fatalities and injuries**.
- 6) **BNPB** has sent Rapid Assessment Team to assist BPBD Karo Regency for managing the situation. The latest eruption did not affect settlement of the relocated IDPs from previous eruption. Masks have been provided to affected people.
- 7) In Karo Regency, emergency response is led by the Regent, BPBD Karo, Indonesian Army, Education agency, and Indonesian Red Cross (**PVMBG**).
- 8) Urgent needs: mask and car with water tank to remove volcanic ash from roads and houses (**BNPB**).
- 9) **PVMBG** & **BNPB** warned population at risk and tourist to avoid areas of 3 km radius from tip of Mt. Sinabung, along the Laborus River and in the following directions from Mt. Sinabung: 7 km to south-southeast, 6 km to southeast-east, 4 km to east-north.
- 10) The situation is well within the capacity of local and national actors on the ground. AHA Centre is closely monitoring the situation.

DATA SOURCES

ASEAN Disaster Monitoring & Response System (DMRS); Pacific Disaster Center (PDC Global); Indonesian National Disaster Management Authority (BNPB); Local Disaster Management Agency of affected areas (BPBDs); Centre for Volcanology and Geological Disaster Mitigation, Geological Agency (PVMBG); NASA; Various news agencies.

DISCLAIMER

The AHA Centre was established in November 2011 by the Association of Southeast Asian Nations (ASEAN) Member States to facilitate cooperation and coordination among Member States, relevant agencies of the United Nations and international organisations in disaster management and humanitarian assistance.

The use of boundaries, geographic names, related information and potential considerations for response are for reference, not warranted to be error free or implying official endorsement from ASEAN Member States.

© 2018 AHA Centre.
All rights reserved.
You are receiving this email because you are registered in our distribution list.

Our mailing address is:
AHA Centre,
GRAHA BNPB 13th Floor,
Jl. Raya Pramuka Kav. 38,
Jakarta 13120 Indonesia

TUESDAY
20 FEB 2018
12:00 UTC+7

Mount Sinabung, Indonesia

2018 Eruption and Update

Flash Update No. 01

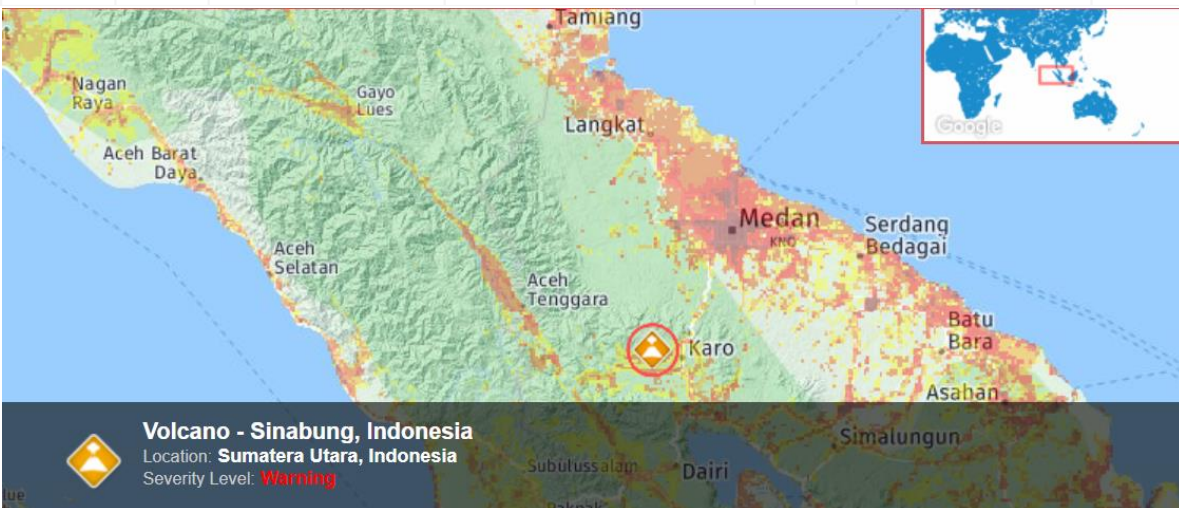
adinet.ahacentre.org/reports/view/212



ONE ASEAN ONE RESPONSE

Active Volcanoes

Event	Severity	Last Updated (UTC)	Name	Region	Primary Observatory	Activity	More Information	Lat/Long
		02-Sep-2010 00:08:31	Volcano - Sinabung, Indonesia	-	-	-	-	3.17° N / 98.4° E



Legend

Population Density (person/sqkm)



Region at risk overview

Lower Left Latitude/Longitude:

2.96° N, 98.63° E

Upper Right Latitude/Longitude:

3.98° N, 98.77° E

Areas reporting volcanic ash rain

Karo Regency, North Aceh Regency,
Southeast Aceh Regency,
Langkat Regency

Total maximum population at risk

5,260,697

Maximum population density

51,164 people/km²



Images of Mount Sinabung, Indonesia, 19 February 2018

(A) [PVMBG](#), (B) [NASA](#), (C) [detik](#) | Social media users are using #sinabung



DATA SOURCES

ASEAN Disaster Monitoring & Response System (DMRS); Pacific Disaster Center (PDC Global); Indonesian National Disaster Management Authority (BNPB); Local Disaster Management Agency of affected areas (BPBDs); Centre for Volcanology and Geological Disaster Mitigation, Geological Agency (PVMBG); NASA; Various news agencies.

DISCLAIMER

The AHA Centre was established in November 2011 by the Association of Southeast Asian Nations (ASEAN) Member States to facilitate cooperation and coordination among Member States, relevant agencies of the United Nations and international organisations in disaster management and humanitarian assistance.

The use of boundaries, geographic names, related information and potential considerations for response are for reference, not warranted to be error free or implying official endorsement from ASEAN Member States.

© 2018 AHA Centre.
All rights reserved.
You are receiving this email because you are registered in our distribution list.

Our mailing address is:
AHA Centre,
GRAHA BNPB 13th Floor,
Jl. Raya Pramuka Kav. 38,
Jakarta 13120 Indonesia